



PROJECT INSPECTION

Generated by Safety Compliance App www.safetycompliance.com | www.safetycomplianceapp.com

Company	Pacific Hydrotech Corporation	Type of Inspection:	General Construction
Project	C2311 Chet PS	Date of Inspection	February 11, 2025
Inspector Name	Janell Gomez	Time of Inspection	09:38 AM

NOTES

19 Items Inspected	13 Satisfactory	0 Unsatisfactory	6 N/A
-----------------------	--------------------	---------------------	----------

INSPECTION ITEMS

General

Is emergency equipment available, including first aid kit(s) and fire extinguisher(s)? Satisfactory

Comment	
Yes both available onsite	

Is safety documentation available (Written Safety Programs, SDS, Tailgate Meetings) Satisfactory

Comment	
Yes available in Lou's office	-

Is drinking water and shade set up sufficient for the amount of workers? Satisfactory

Comment	
Yes adequate amount of water available	-

Are emergency and labor law postings in place?

Satisfactory

Comment

Yes, labor laws were updated today



Is Personal Protective Equipment being worn as required?

Satisfactory

Comment

Yes proper PPE is being worn



Are scaffolding safety procedures being followed?

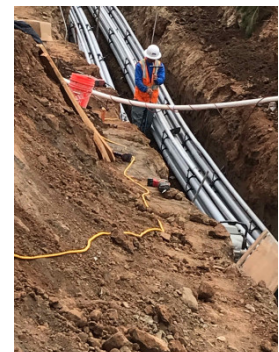
N/A

Are hand and power tools being used safely?

Satisfactory

Comment

Yes power and hand tools being used safely



Is good housekeeping being maintained?

Satisfactory

Comment

House keeping is well maintained



Is fall protection in place where required?

Satisfactory

Comment

Yes areas are cautioned off

-

Is trenching & excavation work being done safely?

Satisfactory

Comment

Yes, areas are benched and sloped



Are confined space safety procedures being followed?

N/A

Are scissor lifts / elevated platforms being used safely?

N/A

Are boom lifts and other aerial devices being used safely?

N/A

Is heavy equipment being used safely?

Satisfactory

Comment

Yes heavy machinery is being used safely



Are electrical items being used safely?	Satisfactory
--	---------------------

Are roofing operations being performed safely?	N/A
---	------------

Is demolition work being done safely?	N/A
--	------------

Are all other tasks being performed safely?	Satisfactory
--	---------------------

Comment	
Electricians and PH crew working. Safely	-

Any other items?	Satisfactory
-------------------------	---------------------