



PROJECT INSPECTION

Generated by Safety Compliance App www.safetycompliance.com | www.safetycomplianceapp.com

Company	Pacific Hydrotech Corporation	Type of Inspection:	General Construction
Project	C2326 Lift Station 55-11	Date of Inspection	December 12, 2024
Inspector Name	Janell Gomez	Time of Inspection	08:52 AM

NOTES


19 Items Inspected	12 Satisfactory	0 Unsatisfactory	7 N/A
------------------------------	---------------------------	----------------------------	-----------------

INSPECTION ITEMS

General

Is emergency equipment available, including first aid kit(s) and fire extinguisher(s)?	Satisfactory
---	---------------------

Comment

Yes, fully stocked and available onsite	
---	---

Is safety documentation available (Written Safety Programs, SDS, Tailgate Meetings)	Satisfactory
--	---------------------

Comment

Yes , available onsite	-
------------------------	---

Is drinking water and shade set up sufficient for the amount of workers?	Satisfactory
---	---------------------

Comment

Yes adequate water onsite	-
---------------------------	---

Are emergency and labor law postings in place?

Satisfactory

Comment

Yes , all labor laws posting and permits are up and up to date

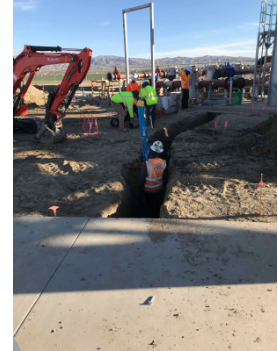


Is Personal Protective Equipment being worn as required?

Satisfactory

Comment

Yes proper PPE is being worn



Are scaffolding safety procedures being followed?

N/A

Are hand and power tools being used safely?

Satisfactory

Comment

Yes power tools and hand tools being used safely



Is good housekeeping being maintained?

Satisfactory

Comment

Yes housing keeping is maintained



Is fall protection in place where required?

Satisfactory

Comment

Yes fall protection is in place



Is trenching & excavation work being done safely?

Satisfactory

Are confined space safety procedures being followed?

N/A

Are scissor lifts / elevated platforms being used safely?

N/A

Are boom lifts and other aerial devices being used safely?

N/A

Is heavy equipment being used safely?

Satisfactory

Comment

Yes heavy machinery is being used safely



Are electrical items being used safely?

N/A

Are roofing operations being performed safely?

N/A

Is demolition work being done safely?

N/A

Are all other tasks being performed safely?

Satisfactory

Comment

Yes, electricians onsite working safely with PH crew

-

Any other items?

Satisfactory