



PROJECT INSPECTION

Generated by Safety Compliance App www.safetycompliance.com | www.safetycomplianceapp.com

Company	Pacific Hydrotech Corporation	Type of Inspection:	General Construction
Project	C2328 Bath San Jacinto	Date of Inspection	January 15, 2025
Inspector Name	Janell Gomez	Time of Inspection	07:51 AM


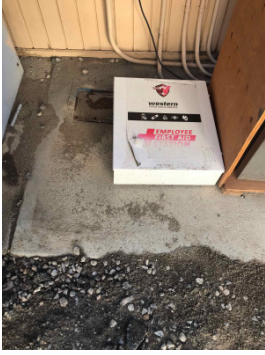
NOTES

19 Items Inspected	12 Satisfactory	0 Unsatisfactory	7 N/A
------------------------------	---------------------------	----------------------------	-----------------

INSPECTION ITEMS

General

Is emergency equipment available, including first aid kit(s) and fire extinguisher(s)? **Satisfactory**

Comment	
Yes available onsite	
Yes first aid available onsite	

Is safety documentation available (Written Safety Programs, SDS, Tailgate Meetings)

Satisfactory

Comment

Yes available onsite



Is drinking water and shade set up sufficient for the amount of workers?

Satisfactory

Comment

Yes adequate amount of water onsite



Are emergency and labor law postings in place?

Satisfactory

Comment

Emergency and labor laws are posted

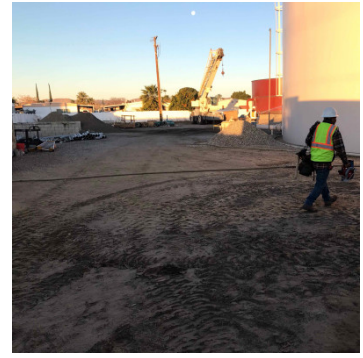


Is Personal Protective Equipment being worn as required?

Satisfactory

Comment

Yes proper PPE is being worn



Are scaffolding safety procedures being followed?

N/A

Are hand and power tools being used safely?

Satisfactory

Comment

Yes hand tools being used safely



Is good housekeeping being maintained?

Satisfactory

Comment

Yes housekeeping is maintained



Is fall protection in place where required?

Satisfactory

Comment

Yes areas are cautioned off properly when inactive



Is trenching & excavation work being done safely?

N/A

Are confined space safety procedures being followed?

N/A

Are scissor lifts / elevated platforms being used safely?

N/A

Are boom lifts and other aerial devices being used safely?

N/A

Is heavy equipment being used safely?

Satisfactory

Comment

Yes heavy equipment is being used safely



Are electrical items being used safely?

Satisfactory

Are roofing operations being performed safely?

N/A

Is demolition work being done safely?

N/A

Are all other tasks being performed safely?

Satisfactory

Any other items?

Satisfactory