



PROJECT INSPECTION

Generated by Safety Compliance App www.safetycompliance.com | www.safetycomplianceapp.com

Company	Pacific Hydrotech Corporation	Type of Inspection:	General Construction
Project	C2416 Johnstown Pump Station Replacement	Date of Inspection	February 03, 2025
Inspector Name	Levinna Ross	Time of Inspection	09:46 AM

NOTES

19 Items Inspected	12 Satisfactory	0 Unsatisfactory	7 N/A
------------------------------	---------------------------	----------------------------	-----------------

INSPECTION ITEMS

General

Is emergency equipment available, including first aid kit(s) and fire extinguisher(s)? Satisfactory

Comment

yes. fire extinguisher available on site



yes. first aid kit on site

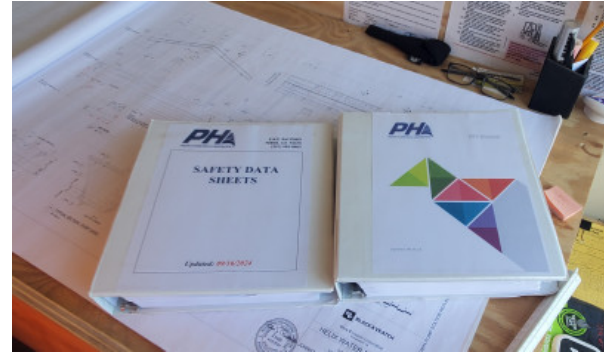


Is safety documentation available (Written Safety Programs, SDS, Tailgate Meetings)

Satis

Comment

yes available on site



Is drinking water and shade set up sufficient for the amount of workers?

Satis

Comment

yes adequate water on site



Are emergency and labor law postings in place?

Satis

Comment

yes posters are up to date



Is Personal Protective Equipment being worn as required?

Satis

Comment

yes proper ppe is being worn



Are scaffolding safety procedures being followed?

M

Are hand and power tools being used safely?

Satis

Is good housekeeping being maintained?

Satis

Comment

housekeeping is maintained



Is fall protection in place where required?

Satis

Comment

area is active and when inactive it will be cautioned off

-

Is trenching & excavation work being done safely?

Satis

Comment

trenching is being done safely. benching is being implemented.



Are confined space safety procedures being followed?

M

Are scissor lifts / elevated platforms being used safely?

M

Are boom lifts and other aerial devices being used safely?

M

Is heavy equipment being used safely?

Satis

Comment

yes, heavy machinery is being used safely. operators are using seat belts



Are electrical items being used safely?

M

Are roofing operations being performed safely?

M

Is demolition work being done safely?

M

Are all other tasks being performed safely?

Satis

Comment

ph crew is working safely

-

Any other items?

Satis