

# SAFETY INSPECTION REPORT

**CONDUCTED FOR:**  
Seaside Steel Inc.

**PROJECT:**  
ACDC



**INSPECTION TYPE:**  
General Construction

**INSPECTOR :** KELLY HEROLD  
**DATE :** JUNE 05, 2024  
**CITY :** ARVIN  
**STATE :** CA

Safety Compliance Company is not responsible for unsafe conditions and situations not seen during this inspection. The items listed above represent only what was seen by the Safety Compliance Company Representative at the time of the inspection. Safety Compliance Company is not responsible for any ongoing unsafe condition(s) whether seen or unseen. In addition, Safety Compliance Company does not have the authority or authorization to approve, certify, or warranty any safety equipment or safety device. This agreement also indemnifies Safety Compliance Company of any omission, gross negligence, willful misconduct related to this report. Under Federal, State and Local Law, it is the responsibility of the employer and all subcontractors to mark all hazards with appropriate signs

# SUMMARY OF INSPECTION

<b>53</b> Items Inspected	<b>28</b> Satisfactory	<b>0</b> Unsatisfactory	<b>25</b> N/A
------------------------------	---------------------------	----------------------------	------------------

I walked site with Safety Bryan. We met up with Seaside foreman Audie and their safety. The crew is in progress of setting rebar in place.

## INSPECTION ITEMS

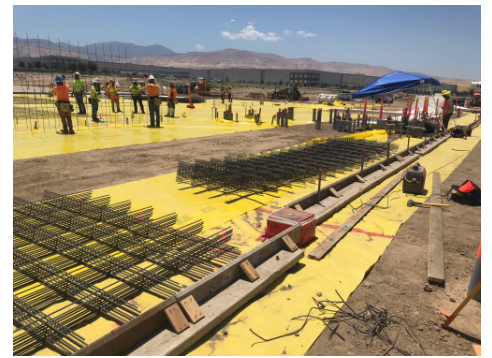
### Documentation

**Site Contact**

Satisfactory

**Comment**

I met up with Audie and we walked jobsite. The crew was working on one pad which was in progress of setting rebar. Rebar is staged very cleanly out of walk paths.



**Safety Program (Including IIPP)**

Satisfactory

**Comment**

Safety Program, IIPP is on site in jobsite trailer, on shelf, over desk.

-

Additional safety documentation of the tailgates, the daily's, the JHAs, the job site inspections, the equipment inspections are on site in same area.

-

**Heat Illness Prevention Program**

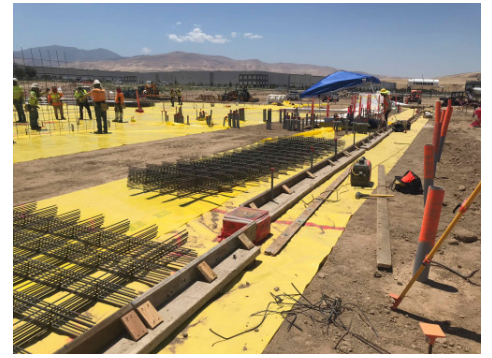
Satisfactory

**Comment**

Good job on water station, shade structure, break recovery area. There are several of these stations around the jobsite work area.



Heat Illness Program is posted in the jobsite trailer. The jobsite has custom made picnic tables under shade. There are many of these on site. On the tables is chilled drinking water in ice chests available.



Type your custom comment...



**Safety Data Sheets**

**Satisfactory**

**Comment**

SDS are available on jobsite in the jobsite trailer.

-

**Daily Inspections**

**Satisfactory**

**Comment**

Daily inspections are being completed along with JHAs.

-

**Tailgate Meetings**

**Satisfactory**

**Comment**

Tailgate meetings are being completed. They are stored in binder in jobsite trailer. These are done daily.

-

<b>Sub-Contractor Meetings</b>	<b>N/A</b>
--------------------------------	------------

<b>OSHA Permits</b>	<b>Satisfactory</b>
---------------------	---------------------

<b>Comment</b>	
----------------	--

There are Cal OSHA Permits are posted in Jobsite trailer on wall to right of entry door.	-
--	---

<b>Labor Law Postings</b>	<b>Satisfactory</b>
---------------------------	---------------------

<b>Comment</b>	
----------------	--

Postings are on site in GC trailer. There are additional required postings in the Yocom jobsite trailer.	-
--	---

<b>Emergency / Other Postings</b>	<b>Satisfactory</b>
-----------------------------------	---------------------

<b>Comment</b>	
----------------	--

The Emergency Phone Number and Emergency Clinic is posted in Yocom trailer along with the GC jobsite trailer. There is an RN on site.	-
---	---

<b>First Aid / CPR Certification</b>	<b>Satisfactory</b>
--------------------------------------	---------------------

<b>Comment</b>	
----------------	--

First aid and CPR Certification is current.	-
---	---

## Emergency Items

<b>Access / Egress</b>	<b>Satisfactory</b>
------------------------	---------------------

<b>Comment</b>	
----------------	--

The jobsite work area is easy access and clean. The GC has put up so much caution tape in various areas with no explanation it is unknown if they are secured work areas or designated walk paths.	-
--	---

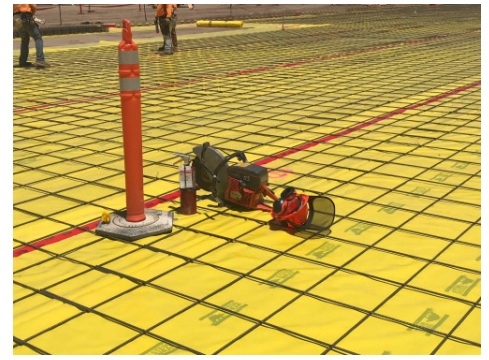
<b>Elevator for Hoisting Workers (if needed)</b>	<b>N/A</b>
--	------------

<b>Fire Extinguisher(s)</b>	<b>Satisfactory</b>
-----------------------------	---------------------

<b>Comment</b>	
----------------	--

Fire extinguishers are located throughout jobsite, on heavy equipment and in jobsite trailer.	-
---	---

Hot Work of cutting rebar. Safety glasses and face shield in use. Fire extuisher staged in vicinity, accessible.



<b>First Aid Kit(s)</b>	<b>Satisfactory</b>
-------------------------	---------------------

<b>Comment</b>	
First aid kit is clean and stocked kept in jobsite trailer. There are also eyewash stations located in all work areas. These have documented water changes.	-

<b>Eye Wash Station</b>	<b>Satisfactory</b>
-------------------------	---------------------

<b>Comment</b>	
Eyewash stations are set up and highlighted in work area. There is documented water changes. They are kept clean.	-

<b>Other Fire Fighting Equipment (If needed)</b>	<b>N/A</b>
--	------------

**General Items**

<b>Restrooms</b>	<b>Satisfactory</b>
------------------	---------------------

<b>Comment</b>	
Restrooms are in work area along with hand wash stations. They are clean and stocked. Per crew they are being well maintained for them.	-

<b>Hand Washing Stations</b>	<b>Satisfactory</b>
------------------------------	---------------------

<b>Comment</b>	
Restrooms are in work area along with hand wash stations. They are clean and stocked. Per crew they are being well maintained for them.	-

<b>Waste Containers</b>	<b>Satisfactory</b>
-------------------------	---------------------

<b>Comment</b>	
There are trash cans for debris and garbage on site.	-

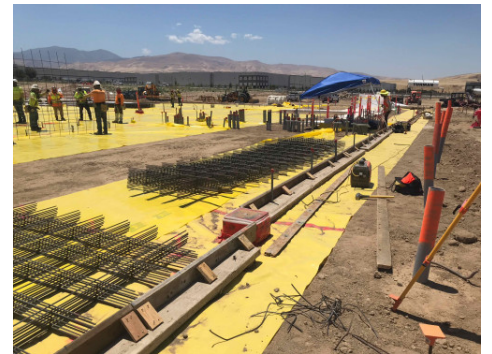
**Potable Water** **Satisfactory**

**Comment**

Additional drinking water and shade available.



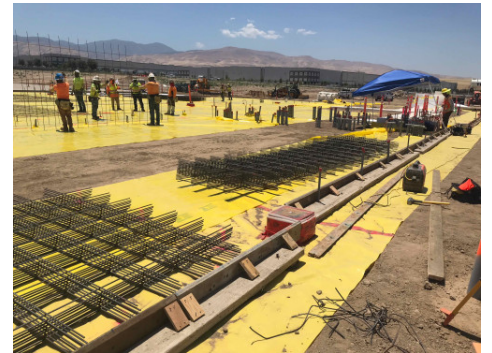
Shade easily accessible. Ice chest with chilled water is on site.



**Shade** **Satisfactory**

**Comment**

Shade is close to work areas and chilled water is staged with shade. There is also a Chill Station on site, available to all with buddy system in place.



**Tools & Equipment**

**Power Tools** **Satisfactory**

**Comment**

There are not too many hand or power tools in use. Chopsaw is in use, in good condition. Hand tools are mostly tie wire nippers, gloves are being worn. The specified gloves.



Type your custom comment...



<b>Hand Tools</b>	<b>Satisfactory</b>
-------------------	---------------------

<b>Comment</b>	
----------------	--

The majority of work transpiring is setting rebar. The hand tools in use are nippers for tying tie wire.

-

<b>Powder Actuated Tools</b>	<b>N/A</b>
------------------------------	------------

<b>Pneumatic Nailers</b>	<b>N/A</b>
--------------------------	------------

<b>Mobile Elevated Work Platforms (MEWP's)</b>	<b>N/A</b>
--	------------

<b>Powered Industrial Trucks</b>	<b>Satisfactory</b>
----------------------------------	---------------------

<b>Comment</b>	
----------------	--

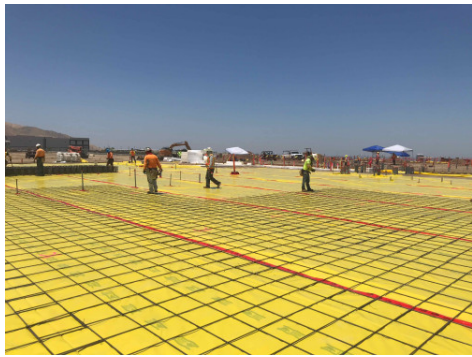
Reachlift is being operated safely. Operator is certified. The crew has rigging done well. There is a spotter and while he is using and on tag line with load he is totally clear on load in case of swing. The operator is driving load at safe pace, load is staying still and stable.



<b>Heavy Mobile Equipment (Excavators, Loaders, etc)</b>	<b>N/A</b>
<b>Cranes</b>	<b>N/A</b>
<b>Cylinder Storage</b>	<b>N/A</b>
<b>Ladders</b>	<b>N/A</b>

## Operations

<b>Personal Protective Equipment</b>	<b>Satisfactory</b>
--------------------------------------	---------------------

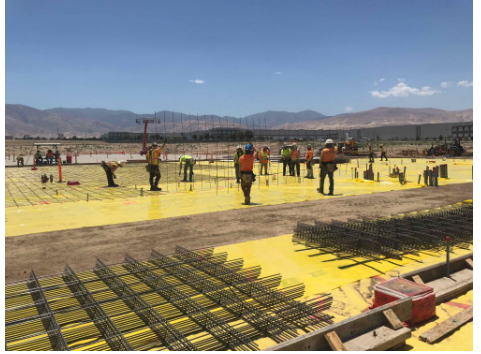
<b>Comment</b>	
Crew members on site with PPE being worn.	

<b>Trenching &amp; Excavation</b>	<b>N/A</b>
<b>Fall Protection</b>	<b>N/A</b>
<b>Guardrails</b>	<b>N/A</b>
<b>Floor / Wall Openings</b>	<b>N/A</b>
<b>Supported Scaffolding</b>	<b>N/A</b>
<b>Mobile Scaffolding</b>	<b>N/A</b>
<b>Suspended Scaffolding</b>	<b>N/A</b>



<b>Confined Spaces</b>	<b>N/A</b>
------------------------	------------

<b>Impalement Hazards</b>	<b>Satisfactory</b>
---------------------------	---------------------


<b>Comment</b>	
Work area has all capped rebar.	-
There is no rebar uncapped. The rebar in use is handled where it is controlled and no exposure. The prepped rebar is staged clear from foot path.	

<b>Traffic Control</b>	<b>N/A</b>
------------------------	------------

<b>Comment</b>	
The GC has set flagging tape in areas. It is abundant. Sometimes it is unclear on which side of flagging is correct.	-

<b>Roofing Operations</b>	<b>N/A</b>
---------------------------	------------

<b>Housekeeping</b>	<b>Satisfactory</b>
---------------------	---------------------

<b>Comment</b>	
Housekeeping work areas are clear, clean, no debris, materials staged well.	

<b>Demolition</b>	<b>N/A</b>
-------------------	------------

<b>Silica Control</b>	<b>N/A</b>
-----------------------	------------

<b>Comment</b>	
There is no silica exposure, dust, cutting transpiring in the work area.	-

<b>Rigging Operations</b>	<b>Satisfactory</b>
---------------------------	---------------------

**Comment**

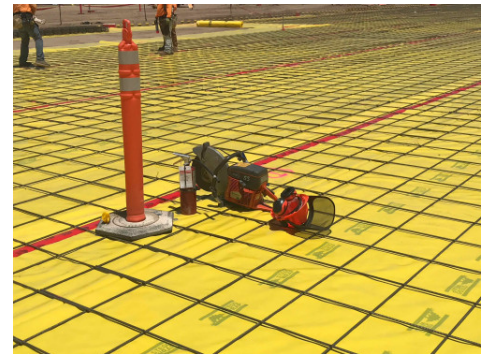
Load rigged well. Tag line in place. Lifted load and waited for any shift. Rigger then acted as spotter and moved load smoothly to work area.



<b>Hot Work</b>	<b>Satisfactory</b>
-----------------	---------------------

**Comment**

Hot work of cutting rebar. Safety glasses and face shield being done. Hot Work Permit in place. Fire extinguisher in place. Work area clear of debris. No wind.



<b>Electrical Safety</b>	<b>N/A</b>
--------------------------	------------

<b>Lockout / Tagout</b>	<b>N/A</b>
-------------------------	------------

<b>Stairways, Ramps, Runways</b>	<b>N/A</b>
----------------------------------	------------

<b>Other Items (that were observed)</b>	<b>Satisfactory</b>
---	---------------------

**Comment**

The jobsite has a lot of effort towards safety. All required and it's been done well. The workers are working safely. PPE is being worn. All on site are very aware of Heat illness vulnerability and great measures have been taken for prevention.

