

SAFETY INSPECTION REPORT

CONDUCTED FOR:
Seaside Steel Inc.

PROJECT:
Little Dipper (Sacramento)



INSPECTION TYPE:
General Construction

INSPECTOR : BRITTON FIELD
DATE : DECEMBER 19, 2024
CITY : SACRAMENTO
STATE : CA

Safety Compliance Company is not responsible for unsafe conditions and situations not seen during this inspection. The items listed above represent only what was seen by the Safety Compliance Company Representative at the time of the inspection. Safety Compliance Company is not responsible for any ongoing unsafe condition(s) whether seen or unseen. In addition, Safety Compliance Company does not have the authority or authorization to approve, certify, or warranty any safety equipment or safety device. This agreement also indemnifies Safety Compliance Company of any omission, gross negligence, willful misconduct related to this report. Under Federal, State and Local Law, it is the responsibility of the employer and all subcontractors to mark all hazards with appropriate signs

SUMMARY OF INSPECTION

54 Items Inspected	22 Satisfactory	0 Unsatisfactory	32 N/A
------------------------------	---------------------------	----------------------------	------------------

A safety inspection was carried out on site today. I was able reviewed all safety concerns noticed on the spot with Carlos .

All documentation and paperwork for the site was filled out and kept in the Forman's truck. Carlos has the following information:

- + Daily site inspections.
- + Weekly tailgate meeting

The following safety observations were made at the time of the inspection:

- + Plenty of drinking water was provided.
- + Power saw used for cutting rebar, had face shield and hearing protection provided.
- + Restrooms were found in satisfactory condition with well stocked wash station.

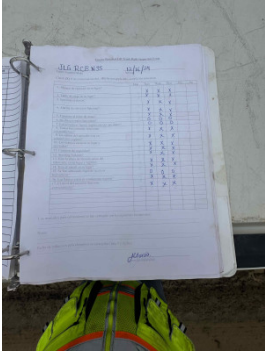
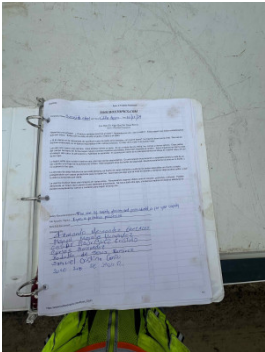
Safety concerns addressed with Carlos:

- No safety concerns were observed on this visit.

Please see additional information below

INSPECTION ITEMS

Documentation	
Site Contact	Satisfactory
Comment	
I was able to walk the site and convey all safety related observations with Carlos.	-
Safety Program (Including IIPP)	
Satisfactory	
Comment	
Safety Program is available	-

Heat Illness Prevention Program		Satisfactory
Comment		
Heat Illness Prevention Program is available and site specific information is completed.		-
Safety Data Sheets		N/A
Daily Inspections		Satisfactory
Comment		
Daily inspections are being performed		
Tailgate Meetings		Satisfactory
Comment		
Tailgate meetings are being conducted each week. Sign in sheets are handed into the GC (buzz oats)		
Sub-Contractor Meetings		N/A
OSHA Permits		N/A
Labor Law Postings		Satisfactory
Comment		
Labor law postings are located inside of site office of GYC.		-


Emergency / Other Postings	Satisfactory
Comment	
Hospital / urgent care route map is located inside of safety manual.	-

First Aid / CPR Certification	Satisfactory
Comment	
Foreman has CPR/first aid certification up-to-date.	-

Emergency Items

Access / Egress	Satisfactory
Comment	
Site access is clear of obstructions and debris.	-

Elevator for Hoisting Workers (if needed)	N/A
--	------------

Fire Extinguisher(s)	Satisfactory
Comment	
Most fire extinguishers were found in satisfactory condition at the time of inspection.	

First Aid Kit(s)	Satisfactory
-------------------------	---------------------

Eye Wash Station	N/A
-------------------------	------------

Personnel Hoist	N/A
------------------------	------------

Other Fire Fighting Equipment (If needed)	N/A
--	------------

General Items

Restrooms

Satisfactory

Comment

Restrooms were found in satisfactory condition.

-

Hand Washing Stations

Satisfactory

Comment

Wash station was found in satisfactory condition.
 - Soap was available
 - Paper towels are stocked.

-

Waste Containers

Satisfactory

Comment

Waste containers were located near restroom and active work area.

-

Potable Water

Satisfactory

Comment

Drinking water was provided.

-

Shade

Satisfactory

Comment

Shade on site and suitable

-

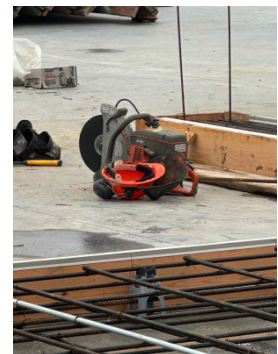
Tools & Equipment

Power Tools

Satisfactory

Comment

Power saw was found in satisfactory condition.



Power saw used for cutting rebar, had face shield and hearing protection provided.	-
--	---

Hand Tools	Satisfactory
-------------------	---------------------

Comment	
----------------	--

All hand tools were observed and satisfactory condition.	-
--	---

Powder Actuated Tools	N/A
------------------------------	------------

Pneumatic Nailers	N/A
--------------------------	------------

Mobile Elevated Work Platforms (MEWP's)	N/A
--	------------

Powered Industrial Trucks	N/A
----------------------------------	------------

Comment	
----------------	--

Reach lift was not being operated at the time of inspection.	-
--	---

Heavy Mobile Equipment (Excavators, Loaders, etc)	N/A
--	------------

Cranes	N/A
---------------	------------

Cylinder Storage	N/A
-------------------------	------------

Ladders	N/A
----------------	------------

Comment	
----------------	--

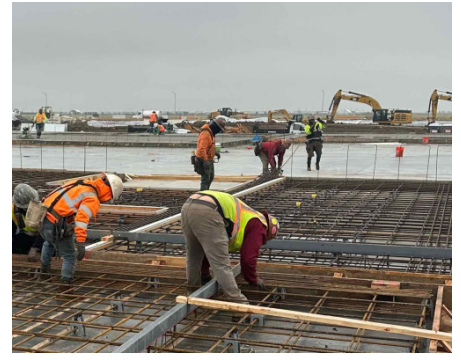
No work requiring ladders was observed at the time of inspection.	-
---	---

Operations	
-------------------	--

Personal Protective Equipment	Satisfactory
--------------------------------------	---------------------

Comment	
----------------	--

All workers were wearing proper PPE for the task at hand. Including gloves.



Trenching & Excavation

N/A

Fall Protection

N/A

Guardrails

N/A

Floor / Wall Openings

Satisfactory

Comment

No ground openings were observed at the time of inspection around the active work area.

-

Supported Scaffolding

N/A

Mobile Scaffolding

N/A

Suspended Scaffolding

N/A

Confined Spaces

N/A

Impalement Hazards

Satisfactory

Comment

No SSI impairment hazards were observed at the time of inspection.

-

Traffic Control

N/A

Comment

Traffic control was as needed. (Buzz Oats)

-

Roofing Operations	N/A
---------------------------	------------

Housekeeping	Satisfactory
Comment	
Active work area was kept free of debris.	-

Demolition	N/A
-------------------	------------

Silica Control	N/A
Comment	
No silica hazard work was being performed near active work area at the time of inspection.	-

Rigging Operations	N/A
---------------------------	------------

Hot Work	N/A
-----------------	------------

Electrical Safety	N/A
Comment	
No electrical safety hazards were observed at the time of inspection.	-

Lockout / Tagout	N/A
-------------------------	------------

Stairways, Ramps, Runways	N/A
----------------------------------	------------

Other Items (that were observed)	N/A
---	------------