

# SAFETY INSPECTION REPORT

**CONDUCTED FOR:**  
Silverwood Landscape Construction, Inc.

**PROJECT:**  
Los Olivos



**INSPECTION TYPE:**  
General Construction

**INSPECTOR :** ALEX MARTINEZ  
**DATE :** MAY 29, 2024  
**CITY :** IRVINE  
**STATE :** CALIFORNIA

Safety Compliance Company is not responsible for unsafe conditions and situations not seen during this inspection. The items listed above represent only what was seen by the Safety Compliance Company Representative at the time of the inspection. Safety Compliance Company is not responsible for any ongoing unsafe condition(s) whether seen or unseen. In addition, Safety Compliance Company does not have the authority or authorization to approve, certify, or warranty any safety equipment or safety device. This agreement also indemnifies Safety Compliance Company of any omission, gross negligence, willful misconduct related to this report. Under Federal, State and Local Law, it is the responsibility of the employer and all subcontractors to mark all hazards with appropriate signs

# SUMMARY OF INSPECTION

<b>52</b> Items Inspected	<b>25</b> Satisfactory	<b>1</b> Unsatisfactory	<b>26</b> N/A
------------------------------	---------------------------	----------------------------	------------------

Miguel Montalva was on site and participated on the safety walk.

The crew and I had a safety meeting after the safety inspection. This month we went over High Heat Procedures which are additional requirements of the Heat Illness Prevention Program when the temperatures surpass 95 degrees. This includes going over water, shade for the project, being prepared for an emergency and establishing a communication system.

The majority of the crew on site was working in a courtyard installing a large amount of plants. The location where they were working was low on space with multiple contractors in the area. The crew was asked to attempt to keep the entrance and exits of the courtyard as best open as possible to ensure they had a safe route to enter and exit the project. Miguel and another crew member were working on marking out locations for irrigation lines that they were preparing to install on another location at the project.

The only correction was on keeping the access to the courtyard free of material and equipment. The courtyard wasn't very large and multiple crew's were working in the area. I told the team to attempt to keep their empty buckets from blocking the entrance.

# INSPECTION ITEMS

## Documentation

**Site Contact**

Satisfactory

**Comment**

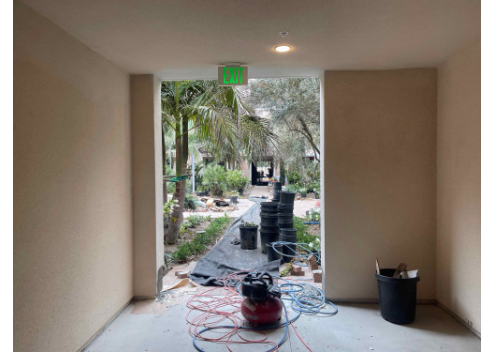
Miguel Montalva was on site.



<b>Safety Program (Including IIPP)</b>	<b>Satisfactory</b>
<b>Comment</b>	
Safety manual was available in the company truck.	-
<b>Heat Illness Prevention Program</b>	<b>Satisfactory</b>
<b>Comment</b>	
Available in the company truck	-
<b>Safety Data Sheets</b>	<b>Satisfactory</b>
<b>Comment</b>	
SDS forms are located in the safety box.	-
<b>Daily Inspections</b>	<b>Satisfactory</b>
<b>Tailgate Meetings</b>	<b>Satisfactory</b>
<b>Comment</b>	
Tailgate meetings are completed on the SCC application	-
<b>Sub-Contractor Meetings</b>	<b>N/A</b>
<b>OSHA Permits</b>	<b>N/A</b>
<b>Labor Law Postings</b>	<b>Satisfactory</b>
<b>Emergency / Other Postings</b>	<b>Satisfactory</b>
<b>Comment</b>	
Emergency contact information can be found in the site safety box.	-
<b>First Aid / CPR Certification</b>	<b>Satisfactory</b>
<b>Comment</b>	
Crew is currently certified.	-
<b>Emergency Items</b>	
<b>Access / Egress</b>	<b>Unsatisfactory</b>

**Comment**

The majority of the crew were working in a courtyard where the entrances and exits were blocked by material. The crew were asked to attempt to keep these routes clear as it would be necessary to escape the area in the event of an emergency.



**Fire Extinguisher(s)**

**Satisfactory**

**First Aid Kit(s)**

**Satisfactory**

**Eye Wash Station**

**N/A**

**Other Fire Fighting Equipment (If needed)**

**N/A**

**General Items**

**Restrooms**

**Satisfactory**

**Comment**

Plenty of restrooms are available around the job-site.



**Hand Washing Stations**

**Satisfactory**

**Waste Containers**

**Satisfactory**

**Potable Water**

**Satisfactory**

**Comment**

Additional water was available in the company truck. The crew working in the courtyard brought a pack of water with them to have near their work location.

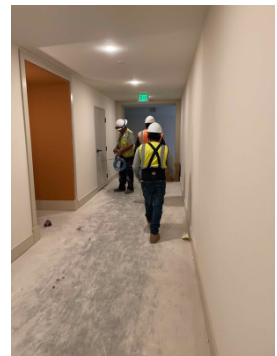


**Shade**

**Satisfactory**

**Comment**

Permanent structures on site provide plenty of shade. Crew's are permitted to enter the buildings if necessary.



**Tools & Equipment**

**Power Tools**

**N/A**

**Hand Tools**

**Satisfactory**

**Comment**

Hand tools on site were in fair condition.



Hand tools on site were in fair condition.



**Powder Actuated Tools** **N/A**

**Pneumatic Nailers** **N/A**

**Mobile Elevated Work Platforms (MEWP's)** **N/A**

**Powered Industrial Trucks** **N/A**

**Heavy Mobile Equipment (Excavators, Loaders, etc)** **Satisfactory**

**Comment**

No heavy equipment was being used during my visit. -

**Cranes** **N/A**

**Cylinder Storage** **N/A**

**Ladders** **N/A**


**Operations**

**Personal Protective Equipment** **Satisfactory**

**Comment**

<p>Crew was observed wearing their required PPE.</p>	
--	---

<b>Trenching &amp; Excavation</b>	<b>Satisfactory</b>
-----------------------------------	---------------------

<b>Comment</b>	
<p>Trenches observed on site were being completed in a compliant manner. No trench on site exceeded 2'.</p>	

<b>Fall Protection</b>	<b>N/A</b>
------------------------	------------

<b>Guardrails</b>	<b>N/A</b>
-------------------	------------

<b>Floor / Wall Openings</b>	<b>Satisfactory</b>
------------------------------	---------------------

<b>Supported Scaffolding</b>	<b>N/A</b>
------------------------------	------------

<b>Mobile Scaffolding</b>	<b>N/A</b>
---------------------------	------------

<b>Suspended Scaffolding</b>	<b>N/A</b>
------------------------------	------------

<b>Confined Spaces</b>	<b>N/A</b>
------------------------	------------

<b>Impalement Hazards</b>	<b>Satisfactory</b>
---------------------------	---------------------

<b>Comment</b>	
<p>No impalement hazards observed.</p>	-

<b>Traffic Control</b>	<b>N/A</b>
<b>Roofing Operations</b>	<b>N/A</b>
<b>Housekeeping</b>	<b>Satisfactory</b>
<b>Comment</b>	
The housekeeping at the project was very well kept up with.	-
<b>Demolition</b>	<b>N/A</b>
<b>Silica Control</b>	<b>Satisfactory</b>
<b>Rigging Operations</b>	<b>N/A</b>
<b>Hot Work</b>	<b>N/A</b>
<b>Electrical Safety</b>	<b>N/A</b>
<b>Lockout / Tagout</b>	<b>N/A</b>
<b>Stairways, Ramps, Runways</b>	<b>Satisfactory</b>
<b>Other Items (that were observed)</b>	<b>N/A</b>