

SAFETY INSPECTION REPORT

CONDUCTED FOR:
Slater Builders

PROJECT:
Bay Shore Hotel



INSPECTION TYPE:
General Construction

INSPECTOR : LINDSEY CRAVEN
DATE : SEPTEMBER 06, 2024
CITY : NEWPORT BEACH
STATE : CA

Safety Compliance Company is not responsible for unsafe conditions and situations not seen during this inspection. The items listed above represent only what was seen by the Safety Compliance Company Representative at the time of the inspection. Safety Compliance Company is not responsible for any ongoing unsafe condition(s) whether seen or unseen. In addition, Safety Compliance Company does not have the authority or authorization to approve, certify, or warranty any safety equipment or safety device. This agreement also indemnifies Safety Compliance Company of any omission, gross negligence, willful misconduct related to this report. Under Federal, State and Local Law, it is the responsibility of the employer and all subcontractors to mark all hazards with appropriate signs

SUMMARY OF INSPECTION

53 Items Inspected	29 Satisfactory	6 Unsatisfactory	18 N/A
------------------------------	---------------------------	----------------------------	------------------

Subs on site:

Apex Fire Systems

CW Plumbing

Rowen Electric

Advanced Framing

K&S - HVAC rough-in

INSPECTION ITEMS

Documentation

Site Contact **Satisfactory**

Comment

Bob Uchityll was on site and we were able to walk together.

-

Safety Program (Including IIPP) **Satisfactory**

Comment

Located in ProCore.

-

Heat Illness Prevention Program **Satisfactory**

Comment

Included with Safety Program.

-

Safety Data Sheets **Satisfactory**


Comment

SDS are available for employee access

-

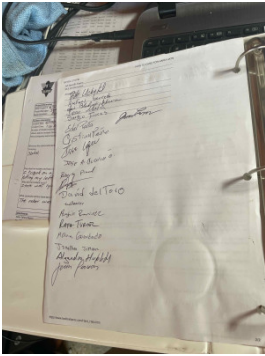
Daily Inspections **Satisfactory**

Comment

<p>Being done on ProCore.</p>	
-------------------------------	---

Tailgate Meetings	Satisfactory
--------------------------	---------------------

Comment	
----------------	--

<p>Tailgates are being conducted at least every 10 working days</p>	
---	--

Sub-Contractor Meetings	Satisfactory
--------------------------------	---------------------

Comment	
----------------	--


<p>AFS is doing their own meetings. All other subs attend and sign off on Bob's tailgate meetings.</p>	-
--	---

OSHA Permits	N/A
---------------------	------------

Labor Law Postings	Satisfactory
---------------------------	---------------------

Comment	
----------------	--

<p>Labor laws are posted.</p>	
-------------------------------	---


Emergency / Other Postings		Unsatisfactory
Comment		
Emergency posters are on site. Recommend moving anything in front of them so they are clearly visible in case of emergency.		

First Aid / CPR Certification		Satisfactory
Comment		
Bob is current with his certifications.	-	

Emergency Items

Access / Egress	Satisfactory
------------------------	---------------------

Elevator for Hoisting Workers (if needed)	N/A
--	------------

Fire Extinguisher(s)		Satisfactory
Comment		
Located throughout site.		

First Aid Kit(s)		Satisfactory
Comment		
Located in job office.	-	

Eye Wash Station	Satisfactory
-------------------------	---------------------

Other Fire Fighting Equipment (If needed)	N/A
--	------------

General Items

Restrooms	Satisfactory
------------------	---------------------

Comment	
----------------	--

Being cleaned twice a week.	-
-----------------------------	---

Hand Washing Stations	Satisfactory
------------------------------	---------------------

Waste Containers	Satisfactory
-------------------------	---------------------

Comment	
----------------	--

Located near restrooms and hand washing stations.	-
---	---

Potable Water	Satisfactory
----------------------	---------------------

Comment	
----------------	--

Plenty available on site.	
---------------------------	---

Shade	Satisfactory
--------------	---------------------

Comment	
----------------	--

Building being used as means of shade.	-
--	---

Tools & Equipment

Power Tools	Satisfactory
--------------------	---------------------

Comment	
----------------	--

Power tools are in good condition and being inspected daily.	-
--	---

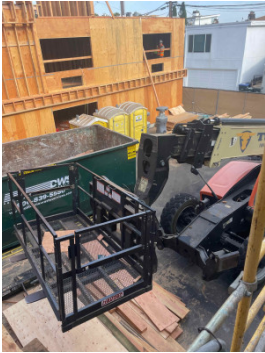
Hand Tools	Satisfactory
-------------------	---------------------

Powder Actuated Tools	N/A
------------------------------	------------

Pneumatic Nailers	Satisfactory
--------------------------	---------------------

Mobile Elevated Work Platforms (MEWP's)	N/A
--	------------

Powered Industrial Trucks	Unsatisfactory
----------------------------------	-----------------------


Comment	
<p>Forklift was parked with basket raised. Employee was cutting lumber underneath raised basket. Corrected on the spot. Key was also left in ignition overnight. Key should be removed and basket lowered when equipment is not in use.</p>	

Heavy Mobile Equipment (Excavators, Loaders, etc)	N/A
--	------------

Cranes	N/A
---------------	------------

Cylinder Storage	N/A
-------------------------	------------

Ladders	Unsatisfactory
----------------	-----------------------

Comment	
<p>Ensure all ladders on site have required safety and warning stickers in place.</p>	

Operations

Personal Protective Equipment

Unsatisfactory

Comment

Employee using saw without eye protection.

-

Trenching & Excavation

Satisfactory

Comment

Trenching is properly delineated with caution tape.



Fall Protection

Satisfactory

Comment

Advanced Framing employee wearing harness while working off ladder near edge.

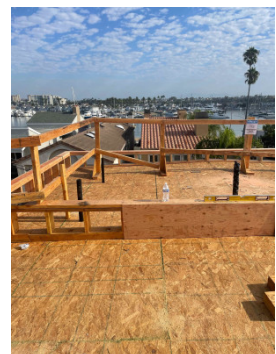
-

Guardrails

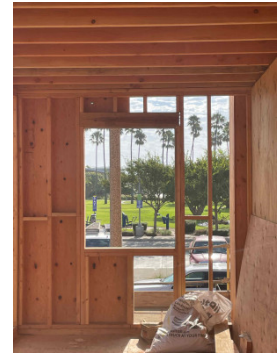
Unsatisfactory

Comment

Ensure midrail is in place and properly nailed to upright support. Middle section of guardrails in this area on the roof is built too low at 41" and 16", respectively. Top rail should be at 42-45" with a midrail at half the height. Corrected on the spot.



Window opening on second floor requires a guardrail as it is less than 36" off the floor with a drop of more than 4 feet. Corrected on the spot.



Floor / Wall Openings

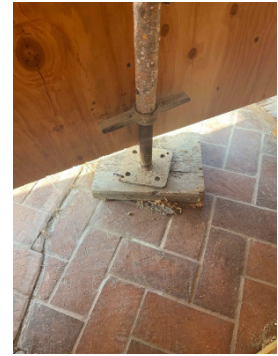
Satisfactory

Supported Scaffolding

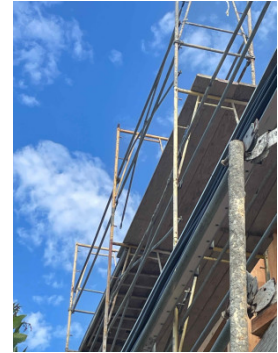
Unsatisfactory

Comment

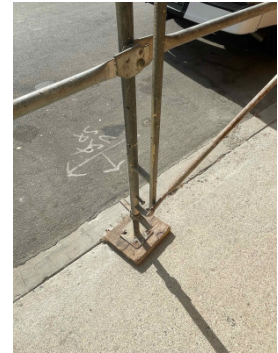
Ensure all scaffolding frames are double nailed to mud sills.



Cross brace on top most section of scaffolding has come unclipped from frame. Corrected on the spot.



Cross brace on street level near entrance to site is unattached to frame. Bob fixed it on the spot.



Mobile Scaffolding	Satisfactory
Comment	
Advanced Framing employee working on mobile scaffolding with wheels properly locked.	-
Suspended Scaffolding	N/A
Confined Spaces	N/A
Impalement Hazards	Satisfactory
Traffic Control	N/A
Roofing Operations	N/A
Housekeeping	Satisfactory
Comment	
Site is clean and organized.	-
Demolition	N/A
Silica Control	N/A
Rigging Operations	N/A
Hot Work	N/A
Electrical Safety	Satisfactory
Comment	
No hazards observed.	-
Lockout / Tagout	N/A
Stairways, Ramps, Runways	Satisfactory

Other Items (that were observed)	N/A
---	------------