

SAFETY INSPECTION REPORT

CONDUCTED FOR:

PROJECT:
The Orchard Acres



INSPECTION TYPE:
General Construction

INSPECTOR : FRANCISCO ROMERO
DATE : AUGUST 30, 2024
CITY : TULARE
STATE : CALIFORNIA

Safety Compliance Company is not responsible for unsafe conditions and situations not seen during this inspection. The items listed above represent only what was seen by the Safety Compliance Company Representative at the time of the inspection. Safety Compliance Company is not responsible for any ongoing unsafe condition(s) whether seen or unseen. In addition, Safety Compliance Company does not have the authority or authorization to approve, certify, or warranty any safety equipment or safety device. This agreement also indemnifies Safety Compliance Company of any omission, gross negligence, willful misconduct related to this report. Under Federal, State and Local Law, it is the responsibility of the employer and all subcontractors to mark all hazards with appropriate signs

SUMMARY OF INSPECTION

53 Items Inspected	40 Satisfactory	0 Unsatisfactory	13 N/A
------------------------------	---------------------------	----------------------------	------------------

At my arrival, I met Manuel's assistant on site, he was really busy with subs and he allowed to do the inspection . I was able to verify their site trailer, and everything looked in order.

Subs on site

- JR PIERCE
- BDI
- LANDSCAPE DEVELOPMENT
- BLUE MOUNTAIN
- MOSKOWITZ ELECTRIC

During the inspection, I found no violations on site.

Manuel and his assistant due a great job maintaining and enforcing safety on site.

I will provide report for their review.

INSPECTION ITEMS

Documentation	
Site Contact	Satisfactory
Safety Program (Including IIPP)	Satisfactory
Heat Illness Prevention Program	Satisfactory
Safety Data Sheets	Satisfactory
Daily Inspections	Satisfactory

Tailgate Meetings	Satisfactory
-------------------	--------------

Sub-Contractor Meetings	Satisfactory
-------------------------	--------------

OSHA Permits	Satisfactory
--------------	--------------

Labor Law Postings	Satisfactory
--------------------	--------------

Emergency / Other Postings	Satisfactory
----------------------------	--------------

First Aid / CPR Certification	Satisfactory
-------------------------------	--------------

Emergency Items

Access / Egress	Satisfactory
-----------------	--------------

Elevator for Hoisting Workers (if needed)	N/A
---	-----

Fire Extinguisher(s)	Satisfactory
----------------------	--------------

First Aid Kit(s)	Satisfactory
------------------	--------------

Eye Wash Station	Satisfactory
------------------	--------------

Other Fire Fighting Equipment (If needed)	N/A
---	-----

General Items

Restrooms	Satisfactory
-----------	--------------

Hand Washing Stations	Satisfactory
-----------------------	--------------

Waste Containers	Satisfactory
------------------	--------------

Potable Water	Satisfactory
---------------	--------------

Shade	Satisfactory
-------	--------------

Tools & Equipment

Power Tools	Satisfactory
-------------	--------------

Hand Tools	Satisfactory
------------	--------------

Powder Actuated Tools	Satisfactory
-----------------------	--------------

Pneumatic Nailers	Satisfactory
-------------------	--------------

Mobile Elevated Work Platforms (MEWP's)	N/A
---	-----

Powered Industrial Trucks	N/A
---------------------------	-----

Heavy Mobile Equipment (Excavators, Loaders, etc)	Satisfactory
---	--------------

Cranes	N/A
--------	-----

Cylinder Storage	N/A
------------------	-----

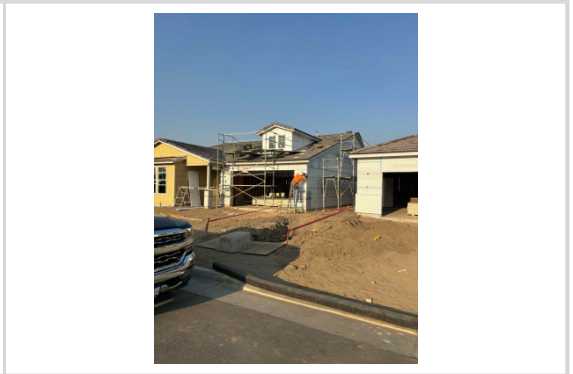
Ladders	Satisfactory
---------	--------------

Operations

Personal Protective Equipment	Satisfactory
-------------------------------	--------------

Comment

Found several workers on site and they were all wearing hard hats and their safety gear



<p>Another group of workers wearing all,their gear on site</p>	
--	---

<p>Trenching & Excavation</p>	<p>Satisfactory</p>
--	----------------------------

<p>Comment</p>	
-----------------------	--

<p>Trenches were cautioned tape properly and securely</p>	
---	--

<p>Fall Protection</p>	<p>Satisfactory</p>
-------------------------------	----------------------------

<p>Guardrails</p>	<p>Satisfactory</p>
--------------------------	----------------------------

<p>Floor / Wall Openings</p>	<p>Satisfactory</p>
-------------------------------------	----------------------------

<p>Supported Scaffolding</p>	<p>Satisfactory</p>
-------------------------------------	----------------------------

<p>Mobile Scaffolding</p>	<p>N/A</p>
----------------------------------	-------------------

<p>Suspended Scaffolding</p>	<p>N/A</p>
-------------------------------------	-------------------

<p>Confined Spaces</p>	<p>N/A</p>
-------------------------------	-------------------

<p>Impalement Hazards</p>	<p>Satisfactory</p>
----------------------------------	----------------------------

<p>Traffic Control</p>	<p>Satisfactory</p>
-------------------------------	----------------------------

Roofing Operations	Satisfactory
Housekeeping	Satisfactory
Demolition	N/A
Silica Control	Satisfactory
Rigging Operations	N/A
Hot Work	N/A
Electrical Safety	Satisfactory
Lockout / Tagout	Satisfactory
Stairways, Ramps, Runways	Satisfactory
Other Items (that were observed)	N/A