

SAFETY INSPECTION REPORT

CONDUCTED FOR:

Thomas James Homes: NorCal

PROJECT:

1060 Karen Way Mountain View



INSPECTION TYPE:

General Construction

INSPECTOR: JOSHUA JOHNSON

DATE: FEBRUARY 19, 2025

CITY: MOUNTAIN VIEW

STATE: CA

SITE CONTACT: RODNEY DIMAPILES

ADDITIONAL SITE CONTACT: RON LAGORIO

Safety Compliance Company is not responsible for unsafe conditions and situations not seen during this inspection. The items listed above represent only what was seen by the Safety Compliance Company Representative at the time of the inspection. Safety Compliance Company is not responsible for any ongoing unsafe condition(s) whether seen or unseen. In addition, Safety Compliance Company does not have the authority or authorization to approve, certify, or warranty any safety equipment or safety device. This agreement also indemnifies Safety Compliance Company of any omission, gross negligence, willful misconduct related to this report. Under Federal, State and Local Law, it is the responsibility of the employer and all subcontractors to mark all hazards with appropriate signs

SUMMARY OF INSPECTION

53 Items Inspected	26 Satisfactory	8 Unsatisfactory	19 N/A
------------------------------	---------------------------	----------------------------	------------------

A site inspection was carried out on-site today and I was able to walk the site and look for any safety concerns. Drywall is ongoing.

Note the following good items that were observed:

- + Fire extinguishers are on site.
- + Site is secure.
- + Hand washing stations are in place.

Note the following violation that need attention:

Emergency / Other Postings:

- As a reminder the Cal/Osha Log 300A Summary Page for the 2024 year should be posted on all job sites for employees to see and reference. This can be posted on a wall inside the house or laminated and posted on the fence next to the Labor Law Posters on the inside of the construction fence.

Restrooms:

- Pan is missing from below the restroom. Ensure it is put in place.

PPE:

- Workers on site missing the necessary PPE. PPE is needed to protect them from common construction hazards on the site. Reminder given on site.

Supported Scaffolding:

- All scaffolding on site must be red-tagged as "Do Not Use" and no one should be allowed to use it until it is made safe by a qualified erector and a competent person signs off on it.
- A green tag/red tag system is recommended where the competent person inspects the scaffold daily and signs off when it is safe to use.
- Toe boards are required at all levels of scaffolding where others can walk under, including entryways.
- Mud-sills are too small. Mud-sill must be 10 inches by 10 inches nominally and 2 inches thick. Ensure proper sizing is in place to contribute to a stable scaffold foundation.
- Pins are not installed going through the scaffolding frame.
- Several areas where planks have fallen to the ground or been removed.
- Some areas are missing the straight brace and/or X-braces on exterior frame. X-braces are needed on every other section of scaffolding.
- The inside sections of scaffolding must have a straight brace, usually near the top of the frames, below the

planks on the next level up. This helps keep the scaffold from shifting

- Planks cannot have a gap between them of more than 1".
- Loose items need to be removed from scaffolding so they do not fall and strike someone on the head.
- Planks must overlap, including at corners of scaffolding.
- Frames can not be cut and used. This alter the structure of the frame and is against the manufacturer instructions.

Impalement Hazard:

- Fence base poses an impalement hazard. Ensure it is removed from the site.
- Green stakes for orange fencing at the back of the property pose an impalement hazard.
- Posts on the stairway pose an impalement hazard.
- Note: Cal Osha mentions the following: "Protection from Reinforcing Steel and Other Similar Projections. (1) Employees working at grade or at the same surface as exposed protruding reinforcing steel or other similar projections, shall be protected against the hazard of impalement by guarding all exposed ends that extend up to 6 feet above grade or other work surface, with protective covers, or troughs.

Electrical Safety:

- Electrical cord and power supply cord damaged. Damaged cord was found in use with a power tool. The worker nearest the tool was informed that the cord cannot be used and followed with taking it out of service. Corrected on site.

Stairways/Ramps/Runways

- Toe-boards missing from the top of the stairway. Toe-boards protect tools and materials from potentially falling below and striking someone. A standard toe board shall be 4 inches (nominal) minimum in vertical height from its top edge to the level of the floor, platform, runway, or ramp. It shall be securely fastened in place and have not more than 1/4-inch clearance above floor level.
- Missing posts and rails. Note: Wood posts shall be not less than 2 inches by 4 inches in cross section, spaced at 8-foot or closer intervals. Ensure guardrails at stairways have a top rail at 42 to 45 inches high and a mid-rail halfway. Top rails must be capable of withstanding loads of 200lbs.

Overall, the site was found in satisfactory condition.

ooo Please see additional report notations below. ooo

INSPECTION ITEMS

Documentation

Safety Program (Including IIPP)

Satisfactory

Comment

TJH Safety Manual/IIPP is available electronically.	-
---	---

Heat Illness Prevention Program	Satisfactory
--	---------------------

Comment	
Available electronically.	-

Safety Data Sheets	Satisfactory
---------------------------	---------------------

Daily Inspections	Satisfactory
--------------------------	---------------------

Comment	
Reminder to make sure documented safety inspections are conducted every time the AM or PM stop by the site.	-


Tailgate Meetings	Satisfactory
--------------------------	---------------------

Comment	
TJH has access to tailgate meetings and are making sure these are conducted and kept on file.	-

Sub-Contractor Meetings	Satisfactory
--------------------------------	---------------------

OSHA Permits	Satisfactory
---------------------	---------------------

Labor Law Postings	Satisfactory
---------------------------	---------------------

Comment	-
Good job having these posted!	

Emergency / Other Postings	Unsatisfactory
-----------------------------------	-----------------------

Comment	TJHNC
----------------	-------

Log 300A not posted. Ensure it is posted.	-
---	---

First Aid / CPR Certification	Satisfactory
--------------------------------------	---------------------

Emergency Items

Access / Egress	Satisfactory
------------------------	---------------------

Comment	
Good access and egress is in place.	-

Elevator for Hoisting Workers (if needed)	N/A
--	------------

Fire Extinguisher(s)	Satisfactory
-----------------------------	---------------------

Comment	-
Available.	-

First Aid Kit(s)	Satisfactory
-------------------------	---------------------

Comment	-
Available up on the fence.	-

Eye Wash Station	Satisfactory
-------------------------	---------------------

Comment	
NOTE: If Thomas James Holmes does not provide an eyewash station subcontractors must provide an eyewash station for their workers as needed.	-

Other Fire Fighting Equipment (If needed)	N/A
--	------------

General Items

Restrooms	Unsatisfactory
------------------	-----------------------

Comment	TJHNC
----------------	--------------

Pan coming out from underneath the restroom. Ensure it is installed completely.



Hand Washing Stations	Satisfactory
------------------------------	---------------------

Comment	
Wash stations are clean and in sanitary condition. There is an adequate supply of soap and paper towels.	-

Waste Containers	Satisfactory
-------------------------	---------------------

Potable Water	Satisfactory
----------------------	---------------------

Shade	Satisfactory
--------------	---------------------

Comment	
Provided by trees on site.	-

Tools & Equipment	
------------------------------	--

Power Tools	Satisfactory
--------------------	---------------------

Comment	
All power tools and equipment in good functional order	-

Hand Tools	Satisfactory
-------------------	---------------------



Comment	
No concerns observed.	-

Powder Actuated Tools	N/A
------------------------------	------------

Pneumatic Nailers	N/A
--------------------------	------------

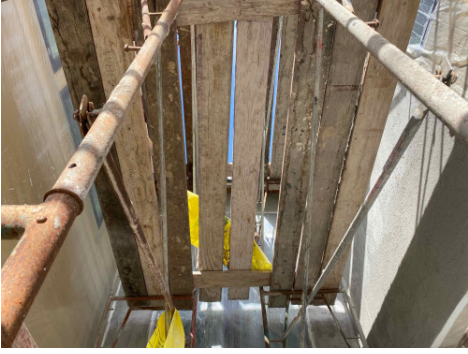
Mobile Elevated Work Platforms (MEWP's)	N/A
Powered Industrial Trucks	N/A
Heavy Mobile Equipment (Excavators, Loaders, etc)	N/A
Cranes	N/A
Cylinder Storage	N/A
Ladders	Satisfactory
Comment	-
No concerns observed.	-

Operations


Personal Protective Equipment	Unsatisfactory
Comment	Green Brush
Limited PPE being worn. We would expect that at least safety glasses be worn during drywall mudding activities.	
Comment	Benicia
Worker performing cleanup activities on the roof and scaffold without necessary PPE. Corrected on site.	

Trenching & Excavation		Satisfactory
Comment		
No concerns observed.		-
Fall Protection		Satisfactory
Guardrails		Satisfactory
Floor / Wall Openings		Satisfactory
Supported Scaffolding		Unsatisfactory
Comment		Benicia

Scaffold should be Red tagged. Various items are incorrect with the scaffold. This includes cross, braces and rails missing. Planks having two large of gaps. Frames being used that have been altered.



Mobile Scaffolding	N/A
Suspended Scaffolding	N/A
Confined Spaces	N/A
Impalement Hazards	Unsatisfactory

Comment	TJHNC
<p>Various hazards observed on site. See photos and summary for additional detail.</p>	

Traffic Control	Satisfactory
Comment	
No concerns observed.	-

Roofing Operations	N/A
---------------------------	------------

Housekeeping	Satisfactory
---------------------	---------------------

Comment	
Housekeeping in good shape.	-


Demolition	N/A
-------------------	------------

Silica Control	N/A
-----------------------	------------

Rigging Operations	N/A
---------------------------	------------

Hot Work	N/A
-----------------	------------

Electrical Safety	Unsatisfactory
--------------------------	-----------------------

Comment	Green Brush
Extension cord and power tool with damage. Reminder given on site.	

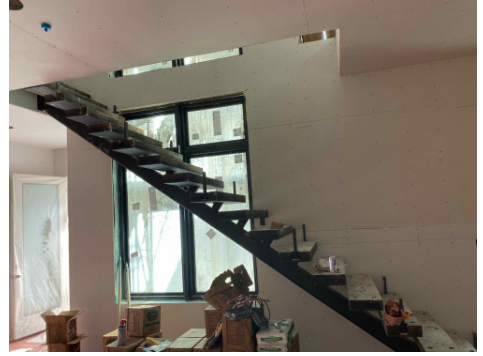
Lockout / Tagout	N/A
-------------------------	------------

Stairways, Ramps, Runways	Unsatisfactory
----------------------------------	-----------------------

Comment

Green Brush

Rails missing on and above the stairway. Site contact following.



Other Items (that were observed)

N/A