

# SAFETY INSPECTION REPORT

## CONDUCTED FOR:

Thomas James Homes: NorCal

## PROJECT:

119 Brook Street BOY San Carlos



## INSPECTION TYPE:

General Construction

**INSPECTOR :** JOSHUA JOHNSON

**DATE :** JUNE 05, 2024

**CITY :** SAN CARLOS

**STATE :** CA

Safety Compliance Company is not responsible for unsafe conditions and situations not seen during this inspection. The items listed above represent only what was seen by the Safety Compliance Company Representative at the time of the inspection. Safety Compliance Company is not responsible for any ongoing unsafe condition(s) whether seen or unseen. In addition, Safety Compliance Company does not have the authority or authorization to approve, certify, or warranty any safety equipment or safety device. This agreement also indemnifies Safety Compliance Company of any omission, gross negligence, willful misconduct related to this report. Under Federal, State and Local Law, it is the responsibility of the employer and all subcontractors to mark all hazards with appropriate signs

# SUMMARY OF INSPECTION

<b>52</b> Items Inspected	<b>23</b> Satisfactory	<b>8</b> Unsatisfactory	<b>21</b> N/A
------------------------------	---------------------------	----------------------------	------------------

A site inspection was carried out on-site today and I was able to walk the site and look for any safety concerns. The house has landscaping and flooring almost completed.

Note the following good items that were observed:

- + Temp electrical panel and receptacles have covers in place.

Note the following violations that need to be addressed:

**Stairways:**

- Toe-boards missing from the top of the stairway. Toe-boards protect tools and materials from potentially falling below and striking someone. A standard toeboard shall be 4 inches (nominal) minimum in vertical height from its top edge to the level of the floor, platform, runway, or ramp. It shall be securely fastened in place and have not more than 1/4-inch clearance above floor level.
- Mid-rail missing on stairway and second floor. Ensure a mid-rail or equivalent is in place to avoid fall hazards. The mid-rail should be midway between the floor and top rail and have the ability to support 150 lbs of force. Sub-contractors ensure the stairway is left in a safe condition.
- As a reminder: Guardrails should consist of a wooden top rail that is 42 inches to 45 inches high and that measures 2 inches x 4 inches or larger. A mid-rail shall be placed halfway between the top rail and the floor.

**Housekeeping:**

- A sizable amount of debris and materials are building up in the garage. It is recommended these items be removed. This poses a trip hazard for those accessing the garage.

**Postings:**

- Labor law posters are missing.

**Emergency Items:**

- A fire extinguisher and a first aid kit could not be found on-site

**Ladder(JW Peterson):**

- Ladders missing legible safety and proper use labels. Note: A designated competent person can inspect the ladder and attach new stickers after they do an inspection to ensure the ladder is still in good condition and safe for use. Then employees can be made aware the ladder is safe to use.

Overall, the site was found in satisfactory condition.

•• Please see additional report notations below. •••

## INSPECTION ITEMS

### Documentation

#### Site Contact

Satisfactory

#### Comment

Jesus López

-

#### Safety Program (Including IIPP)

Satisfactory

#### Comment

The safety manual and IIPP are available electronically.

-

#### Heat Illness Prevention Program

Satisfactory

#### Comment

This is available electronically as part of the IIPP.

-

#### Safety Data Sheets

Satisfactory

#### Daily Inspections

Satisfactory

#### Comment

Reminder to make sure documented safety inspections are conducted every time the AM or PM stop by the site.

-

#### Tailgate Meetings

Satisfactory

#### Comment

TJH has access to tailgate meetings and are making sure these are conducted and kept on file.

-

#### Sub-Contractor Meetings

Satisfactory

#### OSHA Permits

Satisfactory

#### Labor Law Postings

Unsatisfactory


Comment	
Labor law posters could not be located on site.	-

<b>Emergency / Other Postings</b>	<b>Satisfactory</b>
-----------------------------------	---------------------

<b>First Aid / CPR Certification</b>	<b>Satisfactory</b>
--------------------------------------	---------------------

## Emergency Items

<b>Access / Egress</b>	<b>Satisfactory</b>
------------------------	---------------------

Comment	
Good access is in place for the site.	

<b>Fire Extinguisher(s)</b>	<b>Unsatisfactory</b>
-----------------------------	-----------------------

Comment	
Could not be located on site.	-

<b>First Aid Kit(s)</b>	<b>Unsatisfactory</b>
-------------------------	-----------------------

Comment	
Could not be located on site.	-

<b>Eye Wash Station</b>	<b>Unsatisfactory</b>
-------------------------	-----------------------

Comment	
None found on site.	-

<b>Other Fire Fighting Equipment (If needed)</b>	<b>N/A</b>
--	------------

## General Items

<b>Restrooms</b>	<b>Satisfactory</b>
------------------	---------------------

<b>Hand Washing Stations</b>	<b>Unsatisfactory</b>
------------------------------	-----------------------

<b>Comment</b>	
Hand wash station is missing from the outside of the bathroom.	-

<b>Waste Containers</b>	<b>Satisfactory</b>
-------------------------	---------------------

<b>Potable Water</b>	<b>Satisfactory</b>
----------------------	---------------------

<b>Shade</b>	<b>Satisfactory</b>
--------------	---------------------

<b>Comment</b>	
Shade is provided by the structure.	-

<b>Tools &amp; Equipment</b>	
------------------------------	--

<b>Power Tools</b>	<b>Satisfactory</b>
--------------------	---------------------

<b>Comment</b>	
No concerns observed on site.	-

<b>Hand Tools</b>	<b>Satisfactory</b>
-------------------	---------------------

<b>Comment</b>	
JW Peterson observed working safely.	-

<b>Powder Actuated Tools</b>	<b>N/A</b>
------------------------------	------------

<b>Pneumatic Nailers</b>	<b>N/A</b>
--------------------------	------------

<b>Mobile Elevated Work Platforms (MEWP's)</b>	<b>N/A</b>
--	------------


<b>Powered Industrial Trucks</b>	<b>N/A</b>
----------------------------------	------------

<b>Heavy Mobile Equipment (Excavators, Loaders, etc)</b>	<b>N/A</b>
--	------------

<b>Cranes</b>	<b>N/A</b>
---------------	------------

<b>Cylinder Storage</b>	<b>N/A</b>
-------------------------	------------

<b>Ladders</b>	<b>Unsatisfactory</b>
----------------	-----------------------

<b>Comment</b>	
Ladder belonging to JW Peterson missing legible safety labels. See summary for additional details.	
Additional ladder missing legible, safety labels.	

## Operations

<b>Personal Protective Equipment</b>	<b>Satisfactory</b>
--------------------------------------	---------------------

<b>Comment</b>	
No concerns observed on site.	-

<b>Trenching &amp; Excavation</b>	<b>N/A</b>
-----------------------------------	------------

<b>Fall Protection</b>	<b>Satisfactory</b>
------------------------	---------------------

<b>Comment</b>	
See stairway comments.	-

<b>Guardrails</b>	<b>Satisfactory</b>
-------------------	---------------------

<b>Comment</b>	
See stairway comment.	-

<b>Floor / Wall Openings</b>	<b>Satisfactory</b>
------------------------------	---------------------

<b>Supported Scaffolding</b>	<b>N/A</b>
------------------------------	------------

<b>Mobile Scaffolding</b>	<b>N/A</b>
---------------------------	------------

<b>Suspended Scaffolding</b>	<b>N/A</b>
------------------------------	------------

<b>Confined Spaces</b>	<b>N/A</b>
------------------------	------------


<b>Impalement Hazards</b>	<b>Satisfactory</b>
---------------------------	---------------------

<b>Comment</b>	
No concerns observed on site.	-

<b>Traffic Control</b>	<b>N/A</b>
------------------------	------------

<b>Roofing Operations</b>	<b>N/A</b>
---------------------------	------------

<b>Housekeeping</b>	<b>Unsatisfactory</b>
---------------------	-----------------------

<b>Comment</b>	
<p>There is a buildup of garbage and materials in the garage. This is a trip hazard and should be removed.</p>	

<b>Demolition</b>	<b>N/A</b>
-------------------	------------

<b>Silica Control</b>	<b>N/A</b>
-----------------------	------------

<b>Rigging Operations</b>	<b>N/A</b>
---------------------------	------------

<b>Hot Work</b>	<b>N/A</b>
-----------------	------------

<b>Electrical Safety</b>	<b>Satisfactory</b>
--------------------------	---------------------

**Comment**

No concerns observed. Good job having all covers in place!

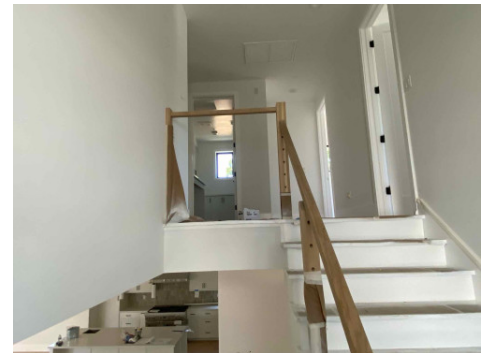


<b>Lockout / Tagout</b>	<b>N/A</b>
-------------------------	------------

<b>Stairways, Ramps, Runways</b>	<b>Unsatisfactory</b>
----------------------------------	-----------------------

**Comment**

Stairway and second floor by stairway missing a mid rail and toe-board. See summary page for additional comments.



<b>Other Items (that were observed)</b>	<b>N/A</b>
---	------------