

SAFETY INSPECTION REPORT

CONDUCTED FOR:
Thomas James Homes: NorCal

PROJECT:
132 Occidental Avenu Burlingame



INSPECTION TYPE:
General Construction

INSPECTOR : JOSHUA JOHNSON
DATE : MAY 22, 2024
CITY : BURLINGAME
STATE : CA

Safety Compliance Company is not responsible for unsafe conditions and situations not seen during this inspection. The items listed above represent only what was seen by the Safety Compliance Company Representative at the time of the inspection. Safety Compliance Company is not responsible for any ongoing unsafe condition(s) whether seen or unseen. In addition, Safety Compliance Company does not have the authority or authorization to approve, certify, or warranty any safety equipment or safety device. This agreement also indemnifies Safety Compliance Company of any omission, gross negligence, willful misconduct related to this report. Under Federal, State and Local Law, it is the responsibility of the employer and all subcontractors to mark all hazards with appropriate signs

SUMMARY OF INSPECTION

52 Items Inspected	29 Satisfactory	7 Unsatisfactory	16 N/A
------------------------------	---------------------------	----------------------------	------------------

A site inspection was carried out on-site today and I was able to walk the site and look for any safety concerns. The house is being framed.

Note the following good items that were observed:

- + Temp electrical panel and receptacles have covers in place.
- + Fire extinguisher and first aid kit are on site.
- + 2024 Labor Laws are posted.
- + Elite Builders is making sure platforms and guardrails are complete around the 2nd story.
- + Good job caring for impalement hazards on the site.
- + Good job having traffic control in place by Elite Builders.

Note the following violation that needs to be addressed:

Pneumatic Nailers:

- Several nail guns were left unattended and plugged into a air compressor (Elite Builders). Manufacturer instructions require these be un-plugged from an air source when they are unattended. Cal/Osha indicates the following: "Safety training shall be conducted prior to initial assignment to operate pneumatically-driven nailers or staplers. Refresher training shall be provided to the operator when: The operator has been observed using the pneumatically-driven nailer or stapler in an unsafe manner." This training should be verified.

Reach-lift/Rigging:

- A fire extinguisher is missing from the cab. This is part of the daily inspection as the extinguisher needs to be charged and on the equipment at all times times. Sub-contractors should be reminded of this requirement and check for it on there daily inspections.
- A seatbelt was not being worn while the equipment was being operated (Elite Builders). This is a significant danger to the operator since the seatbelt keeps them in the protection of the cab. This was corrected on site.
- Comments of possibly overloading rigging were heard on site (Elite Builders). Reminders were given on site.
- NOTE: Proof of reach-lift training and rigging training should be requested from Elite Builders.

Holes and Trenches:

- Open hole/trench at the front of the site. Delineation lines should be used to identify the hazard.

Housekeeping:

- A sizable amount of debris has collected by the dumpster since it is full. It is recommended these items be

removed. This is a trip hazard.

Overall, the site was found in satisfactory condition.

••• Please see additional report notations below. •••

INSPECTION ITEMS

Documentation

Site Contact

Satisfactory

Comment

Victor Luva

-

Safety Program (Including IIPP)

Satisfactory

Comment

TJH Safety Manual/IIPP is in the process of being updated.

-

Heat Illness Prevention Program

Satisfactory

Comment

Available electronically.

-

Safety Data Sheets

Satisfactory

Comment

Available as needed.

-

Daily Inspections

Satisfactory

Comment

Reminder to make sure documented safety inspections are conducted every time the AM or PM stop by the site.

-

Tailgate Meetings

Satisfactory

Comment

TJH has access to tailgate meetings and are making sure these are conducted and kept on file.


-

Sub-Contractor Meetings **Satisfactory**

OSHA Permits **Satisfactory**

Comment	
In place.	-

Labor Law Postings **Satisfactory**

Comment	
These are posted on site.	

Emergency / Other Postings **Satisfactory**

First Aid / CPR Certification **Satisfactory**

Emergency Items

Access / Egress **Satisfactory**

Fire Extinguisher(s) **Satisfactory**

Comment	
Up on the fence.	

First Aid Kit(s) **Satisfactory**

Comment	
Up on fence.	-

Eye Wash Station	Satisfactory
-------------------------	---------------------

Comment	
If not provided by TJH, sub- contractors should have one available to their workers.	-

Other Fire Fighting Equipment (If needed)	N/A
--	------------

General Items

Restrooms	Satisfactory
------------------	---------------------

Hand Washing Stations	Unsatisfactory
------------------------------	-----------------------

Comment	
Proper handwashing station are missing from outside of the bathroom facilities.	-

Waste Containers	Satisfactory
-------------------------	---------------------

Comment	
See housekeeping comments.	-

Potable Water	Satisfactory
----------------------	---------------------

Shade	Satisfactory
--------------	---------------------

Comment	
In place for workers as needed.	-

Tools & Equipment

Power Tools	Satisfactory
--------------------	---------------------

Comment	
No concerns observed.	-

Hand Tools	Satisfactory
-------------------	---------------------

Comment	
---------	--

No concerns observed.	-
-----------------------	---

Powder Actuated Tools	N/A
------------------------------	------------

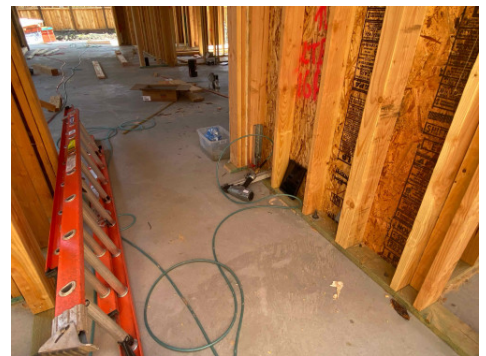
Pneumatic Nailers	Unsatisfactory
--------------------------	-----------------------

Comment	
----------------	--

Several examples were observed of nailers belonging to Elite Builders were left plugged in while unattended.



Another example.





Mobile Elevated Work Plarforms (MEWP's)	N/A
--	------------

Powered Industrial Trucks	Unsatisfactory
----------------------------------	-----------------------

Comment	
----------------	--

Operator without PPE or a seatbelt. Corrected on site. Elite Builders should provide documented proof of reachlift training.



<p>Corrected photo.</p>	
<p>Comments were overheard of rigging being overloaded. Reminders were given on site. TJH should ensure Elite Builders provides documentation of rigging training for their workers.</p>	

<p>Heavy Mobile Equipment (Excavators, Loaders, etc)</p>	<p>N/A</p>
---	-------------------

<p>Cranes</p>	<p>N/A</p>
----------------------	-------------------

<p>Cylinder Storage</p>	<p>N/A</p>
--------------------------------	-------------------

<p>Ladders</p>	<p>Satisfactory</p>
-----------------------	----------------------------

<p style="text-align: center;">Comment</p>	
<p>No concerns observed.</p>	<p style="text-align: center;">-</p>

Operations

<p>Personal Protective Equipment</p>	<p>Unsatisfactory</p>
---	------------------------------

<p style="text-align: center;">Comment</p>	
<p>Some Elite Builders workers were observed without needed PPE.</p>	<p style="text-align: center;">-</p>

<p>Trenching & Excavation</p>	<p>Unsatisfactory</p>
--	------------------------------

<p style="text-align: center;">Comment</p>	
---	--

Delineation lines needed for this trench/hole at the front of the property. Presentlt it is covered by debris.



Fall Protection

Satisfactory

Comment

No concerns observed.

-

Guardrails

Satisfactory

Comment

On site foreman indicated that the rails and platforms will be complete before it is used.



Floor / Wall Openings

Satisfactory

Comment

No concerns observed.

-

Supported Scaffolding

N/A

Mobile Scaffolding

N/A

Suspended Scaffolding

N/A

Confined Spaces

N/A

Impalement Hazards

Satisfactory

Comment

No concerns observed. Good job protecting electrical grounding stakes.



Traffic Control

Satisfactory

Comment

Good job By Elite Builders having traffic control in place.



Roofing Operations

N/A

Housekeeping

Unsatisfactory

Comment

Large amount of debris and materials need to be cleaned up. They are a trip hazard. The dumpster is full and overflowing.



Demolition

N/A

Silica Control

N/A

Rigging Operations	Unsatisfactory
---------------------------	-----------------------

Comment	
----------------	--

See reach-lift comments.	-
--------------------------	---

Hot Work	N/A
-----------------	------------

Electrical Safety	Satisfactory
--------------------------	---------------------

Comment	
----------------	--

Covers are all in place.



Lockout / Tagout	N/A
-------------------------	------------

Stairways, Ramps, Runways	Satisfactory
----------------------------------	---------------------

Comment	
----------------	--

No concerns observed.	-
-----------------------	---

Other Items (that were observed)	N/A
---	------------