

SAFETY INSPECTION REPORT

CONDUCTED FOR:
Thomas James Homes: NorCal

PROJECT:
455 King St.



INSPECTION TYPE:
General Construction

INSPECTOR : JOSHUA JOHNSON
DATE : JANUARY 08, 2025
CITY : REDWOOD CITY
STATE : CA

Safety Compliance Company is not responsible for unsafe conditions and situations not seen during this inspection. The items listed above represent only what was seen by the Safety Compliance Company Representative at the time of the inspection. Safety Compliance Company is not responsible for any ongoing unsafe condition(s) whether seen or unseen. In addition, Safety Compliance Company does not have the authority or authorization to approve, certify, or warranty any safety equipment or safety device. This agreement also indemnifies Safety Compliance Company of any omission, gross negligence, willful misconduct related to this report. Under Federal, State and Local Law, it is the responsibility of the employer and all subcontractors to mark all hazards with appropriate signs

SUMMARY OF INSPECTION

55 Items Inspected	31 Satisfactory	5 Unsatisfactory	19 N/A
------------------------------	---------------------------	----------------------------	------------------

A site inspection was carried out on-site today and I was able to walk the site and look for any safety concerns. Framing is ongoing.

Note the following good items that were observed:

- + Temp electrical panel and receptacles have covers in place.
- + 2024 Labor Laws are posted.
- + An eye wash station is on site.
- + Restrooms in place and stocked.
- + Hand washing stations are in place.

Note the following violations that need attention:

Trenching & Excavation:

- Unmarked trenches that poses a trip or fall hazard to workers. A delineation line or cover should be used to protect workers in the area from the hazard.

Note: Trenches over 5 feet require proper permitting. Trenches should be sloped, benched or supported before entry. Proper access/egress should be in place by mean of ladders. Additionally, a competent person should evaluate trenches daily before entry. Finally, spoil piles should be kept 2 feet or more away from the edges of trenches.

Supported Scaffold:

- All scaffolding on site must be red-tagged as "Do Not Use" and no one should be allowed to use it until it is made safe by a qualified erector and a competent person signs off on it.
- Areas where planks are missing. Scaffold platforms must be fully planked.
- On a 3 foot wide scaffolding a anchor is needed starting at 9 feet high and every 20 feet vertically. Additionally anchors must be within 12 feet of the top of the scaffold. Anchors should be at least every 30 feet horizontally. Ensure end frames are properly anchored.
- Ensure rails are in place to prevent falls. Some locations were missing rails.

Impalement Hazards:

- Fence base poses an impalement hazard. Ensure it is removed from the site.

Note: Cal Osha mentions the following: "Protection from Reinforcing Steel and Other Similar Projections. (1) Employees working at grade or at the same surface as exposed protruding reinforcing steel or other similar projections, shall be protected against the hazard of impalement by guarding all exposed ends that extend up to 6 feet above grade or other work surface, with protective covers, or troughs.

Overall, the site was found in satisfactory condition.

ooo Please see additional report notations below. ooo

INSPECTION ITEMS

Documentation

Site Contact Satisfactory

Comment

Jesse Quintero

-

Safety Program (Including IIPP) Satisfactory

Comment

TJH Safety Manual/IIPP is available electronically.

-

Heat Illness Prevention Program Satisfactory

Comment

Available electronically.

-

Safety Data Sheets Satisfactory

Daily Inspections Satisfactory

Comment

Reminder to make sure documented safety inspections are conducted every time the AM or PM stop by the site.

-

Tailgate Meetings Satisfactory


Comment

TJH has access to tailgate meetings and are making sure these are conducted and kept on file.

-

Sub-Contractor Meetings Satisfactory

OSHA Permits Satisfactory

Labor Law Postings		Satisfactory
Comment		-
Good job having them posted! Note: They are starting to fall down.		
Emergency / Other Postings		Satisfactory
First Aid / CPR Certification		Satisfactory
Emergency Items		
Access / Egress		Satisfactory
Elevator for Hoisting Workers (if needed)		N/A
Fire Extinguisher(s)		Satisfactory
Comment		-
Available on site.		
First Aid Kit(s)		Satisfactory
Comment		-
Available on site.		
Eye Wash Station		Satisfactory
Comment		-
If the GC does not provide an eyewash station subcontractors must make sure one is available to its workers as needed.		
Other Fire Fighting Equipment (If needed)		N/A

General Items

Restrooms

Satisfactory

Comment

-

Plenty of toilets are located on site and are being kept clean and in good working order.



Hand Washing Stations

Satisfactory

Comment

Available on site.



Waste Containers

Satisfactory

Comment

Waste containers provided

-

Potable Water

Satisfactory

Shade

Satisfactory

Comment

Provided by the building structure.

-

Tools & Equipment

Power Tools	Satisfactory
--------------------	---------------------

Comment	
All power tools and equipment in good functional order	-

Hand Tools	Satisfactory
-------------------	---------------------

Comment	
No concerns observed during the visit.	-

Powder Actuated Tools	N/A
------------------------------	------------

Pneumatic Nailers	N/A
--------------------------	------------

Mobile Elevated Work Platforms (MEWP's)	N/A
--	------------

Powered Industrial Trucks	N/A
----------------------------------	------------

Heavy Mobile Equipment (Excavators, Loaders, etc)	N/A
--	------------

Cranes	N/A
---------------	------------

Cylinder Storage	N/A
-------------------------	------------

Ladders	Satisfactory
----------------	---------------------

Operations	
-------------------	--

Personal Protective Equipment	Satisfactory
--------------------------------------	---------------------

Trenching & Excavation	Unsatisfactory
-----------------------------------	-----------------------

Comment	Geer
----------------	-------------

Trenching missing covers and delineation lines. Ensure protection is put in place.



Comment

Geer

Spoil piles too close to the trench. See summary for additional details.

-

Fall Protection

Satisfactory

Guardrails

Satisfactory

Floor / Wall Openings

Satisfactory

Supported Scaffolding

Unsatisfactory

Comment

Benicia Plaster & Lathe

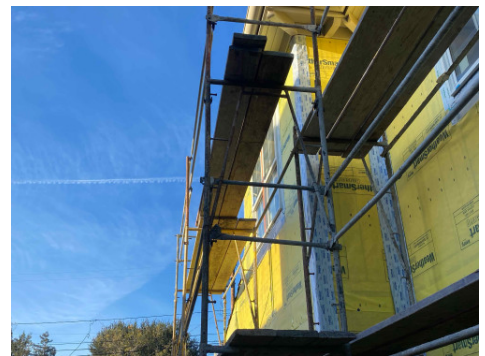
Scaffolding foundation compromise due to a trench underneath the scaffold. This item was immediately reported to the site contact. The scaffold should be taken down until a suitable foundation can be put in place.



Comment

Benicia Plaster & Lathe

Various issues with the scaffold on site. Rails missing. Planks missing. Ensure these are put back in place or ensure the scaffold is red tagged do not use.




Mobile Scaffolding	N/A
---------------------------	------------

Suspended Scaffolding	N/A
------------------------------	------------

Confined Spaces	N/A
------------------------	------------

Impalement Hazards	Unsatisfactory
---------------------------	-----------------------

Comment	TJHNC
Fence base on site is a hazard. Ensure that it is removed.	

Traffic Control	Satisfactory
------------------------	---------------------

Comment	
No concerns observed.	-

Roofing Operations	N/A
---------------------------	------------

Housekeeping	Satisfactory
---------------------	---------------------

Demolition	N/A
-------------------	------------

Silica Control	N/A
-----------------------	------------

Rigging Operations	N/A
---------------------------	------------

Hot Work	N/A
-----------------	------------

Electrical Safety	Satisfactory
--------------------------	---------------------

Comment	
	-

Good job having all covers in place.



Lockout / Tagout

N/A

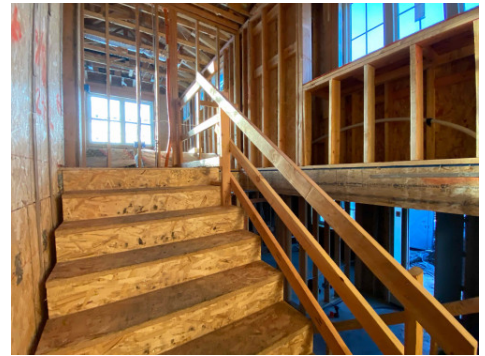
Stairways, Ramps, Runways

Satisfactory

Comment

-

Good job having the toe-board in place.



Other Items (that were observed)

N/A