

SAFETY INSPECTION REPORT

CONDUCTED FOR:
UC Construction

PROJECT:
Euclid Apartments



INSPECTION TYPE:
General Construction

INSPECTOR : JORDAN DELOYE
DATE : JANUARY 07, 2025
CITY : NATIONAL CITY
STATE : CA

Safety Compliance Company is not responsible for unsafe conditions and situations not seen during this inspection. The items listed above represent only what was seen by the Safety Compliance Company Representative at the time of the inspection. Safety Compliance Company is not responsible for any ongoing unsafe condition(s) whether seen or unseen. In addition, Safety Compliance Company does not have the authority or authorization to approve, certify, or warranty any safety equipment or safety device. This agreement also indemnifies Safety Compliance Company of any omission, gross negligence, willful misconduct related to this report. Under Federal, State and Local Law, it is the responsibility of the employer and all subcontractors to mark all hazards with appropriate signs

SUMMARY OF INSPECTION

54 Items Inspected	24 Satisfactory	6 Unsatisfactory	24 N/A
------------------------------	---------------------------	----------------------------	------------------

The job site was reviewed with Ismael Cruz. We were able to discuss all aspects of the job as well as all safety concerns that were noticed on site. Note the following:

1. ****Impalement Hazards****: Please ensure that caps are placed over all bolts in pads and metal stakes that present impalement hazards

2. ****Trenching****: One trench that sits up against a 7' bank should be approved by a professional engineer assuring that it's safe to work around.

3. ****PPE****: Please make sure that workers are keeping their hard hats on.

INSPECTION ITEMS

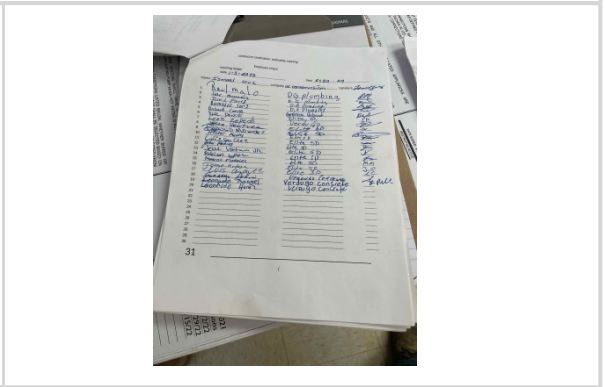
Documentation	
Site Contact	Satisfactory
Comment	
Reviewed the site with Stan.	-
Safety Program (Including IIPP)	Satisfactory
Comment	
Safety Program is available	-
Heat Illness Prevention Program	Satisfactory
Comment	
Heat Illness Prevention Program is available and site specific information is completed.	-
Safety Data Sheets	Satisfactory
Comment	

SDS are available for employee access	-
---------------------------------------	---

Daily Inspections	Satisfactory
--------------------------	---------------------

Comment	
----------------	--

Daily inspections are being performed



Tailgate Meetings	Satisfactory
--------------------------	---------------------

Comment	
----------------	--

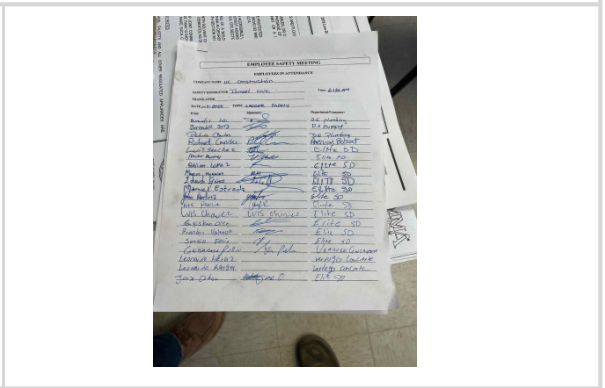
Tailgates are being conducted at least every 10 working days

-

Sub-Contractor Meetings	Satisfactory
--------------------------------	---------------------

Comment	
----------------	--

Sub contractors are performing their tailgate meetings at least every 10 working days



OSHA Permits	Unsatisfactory
---------------------	-----------------------

Comment	-
----------------	---

Please post Osha Trenching Permit in the office

-

Labor Law Postings	Satisfactory
---------------------------	---------------------

Comment	
----------------	--

Labor law postings are in place as required.

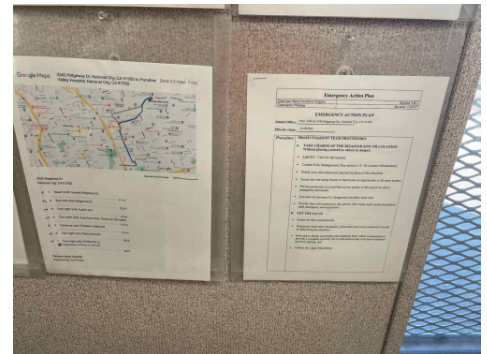


Emergency / Other Postings

Satisfactory

Comment

Emergency posters are on site and directions to nearest medical facility are posted.



First Aid / CPR Certification

Satisfactory

Emergency Items

Access / Egress

Satisfactory

Elevator for Hoisting Workers (if needed)

N/A

Fire Extinguisher(s)

Unsatisfactory

Comment

<p>Fire extinguisher is not current and not up-to-date</p>	
--	---

First Aid Kit(s)	Satisfactory
-------------------------	---------------------

Comment	
----------------	--

<p>Located in the office</p>	
------------------------------	--

Eye Wash Station	Satisfactory
-------------------------	---------------------

Comment	
----------------	--

<p>Located in the office</p>	<p style="text-align: center;">-</p>
------------------------------	--------------------------------------

Other Fire Fighting Equipment (If needed)	N/A
--	------------

General Items

Restrooms	Satisfactory
------------------	---------------------

Comment	
----------------	--

Plenty of toilets are located on site and are being kept clean and in good working order.



Hand Washing Stations

Satisfactory

Comment

On site and stocked



Waste Containers

Satisfactory

Comment

Waste containers provided

-

Potable Water

Satisfactory

Comment

Provided bottled water



Shade

Satisfactory

Comment

Shade on site and suitable

-

Tools & Equipment

Power Tools

Satisfactory

Comment

All power tools and equipment in good functional order



Hand Tools

Satisfactory

Powder Actuated Tools

N/A

Pneumatic Nailers

N/A

Mobile Elevated Work Platforms (MEWP's)

N/A

Powered Industrial Trucks

Satisfactory

Comment

Equipment inspected daily

-

Heavy Mobile Equipment (Excavators, Loaders, etc)

Satisfactory

Comment

Heavy Equipment inspected daily

-

Cranes

N/A


Cylinder Storage

N/A


Ladders	N/A
----------------	------------

Operations

Personal Protective Equipment	Unsatisfactory
--------------------------------------	-----------------------

Comment	
<p>Some of the concrete workers were not wearing their hard hats.</p>	

Trenching & Excavation	Unsatisfactory
-----------------------------------	-----------------------

Comment	
<p>One trench that sits up against a 7' bank should be approved by a professional engineer assuring that it's safe to work around. Any excavation 5' or deeper must have a protective system in place. If that is not possible, a professional engineer needs to be consulted to ensure it is safe to work around. This excavation is 7'</p>	

Fall Protection	N/A
------------------------	------------

Guardrails	N/A
-------------------	------------

Floor / Wall Openings	N/A
------------------------------	------------

Supported Scaffolding	N/A
------------------------------	------------

Mobile Scaffolding	N/A
---------------------------	------------

Suspended Scaffolding	N/A
------------------------------	------------

Confined Spaces	N/A
------------------------	------------

Impalement Hazards	Unsatisfactory
---------------------------	-----------------------

Comment

Please ensure that caps are placed over all bolts in pads that present impalement hazards



Comment

Please make sure that protective caps are covering all metal stakes that present an impalement hazard.



Traffic Control	Satisfactory
------------------------	---------------------

Comment

Traffic control applied as to city plan



Roofing Operations	N/A
---------------------------	------------

Housekeeping	Satisfactory
Comment	
Housekeeping in good shape.	-
Demolition	N/A
Silica Control	N/A
Rigging Operations	N/A
Hot Work	N/A
Electrical Safety	N/A
Lockout / Tagout	N/A
Stairways, Ramps, Runways	N/A
Other Items (that were observed)	N/A