

# SAFETY INSPECTION REPORT

**CONDUCTED FOR:**  
West Builders, Inc.

**PROJECT:**  
Fullerton HUB



**INSPECTION TYPE:**  
General Construction

**INSPECTOR :** JEREMY CHAVEZ  
**DATE :** JULY 11, 2024  
**CITY :** FULLERTON  
**STATE :** CA

Safety Compliance Company is not responsible for unsafe conditions and situations not seen during this inspection. The items listed above represent only what was seen by the Safety Compliance Company Representative at the time of the inspection. Safety Compliance Company is not responsible for any ongoing unsafe condition(s) whether seen or unseen. In addition, Safety Compliance Company does not have the authority or authorization to approve, certify, or warranty any safety equipment or safety device. This agreement also indemnifies Safety Compliance Company of any omission, gross negligence, willful misconduct related to this report. Under Federal, State and Local Law, it is the responsibility of the employer and all subcontractors to mark all hazards with appropriate signs

# SUMMARY OF INSPECTION

<b>53</b> Items Inspected	<b>30</b> Satisfactory	<b>8</b> Unsatisfactory	<b>15</b> N/A
------------------------------	---------------------------	----------------------------	------------------

Sub contractors

Trademark

AMPAM

Atlas

GYC

Sharpe

D1

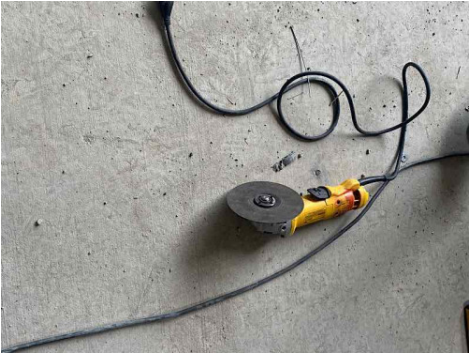

Rye Electric

# INSPECTION ITEMS

## Documentation

<b>Site Contact</b>	<b>Satisfactory</b>
<b>Comment</b>	
Site reviewed with Joe Piane.	-
<b>Safety Program (Including IIPP)</b>	<b>Satisfactory</b>
<b>Heat Illness Prevention Program</b>	<b>Satisfactory</b>
<b>Safety Data Sheets</b>	<b>Satisfactory</b>
<b>Daily Inspections</b>	<b>Satisfactory</b>
<b>Tailgate Meetings</b>	<b>Satisfactory</b>
<b>Sub-Contractor Meetings</b>	<b>N/A</b>

**OSHA Permits****Satisfactory****Labor Law Postings****Satisfactory****Emergency / Other Postings****Satisfactory****First Aid / CPR Certification****Satisfactory****Emergency Items****Access / Egress****Satisfactory****Elevator for Hoisting Workers (if needed)****Satisfactory****Fire Extinguisher(s)****Satisfactory****First Aid Kit(s)****Satisfactory****Eye Wash Station****Satisfactory****Other Fire Fighting Equipment (If needed)****N/A****General Items****Restrooms****Satisfactory****Hand Washing Stations****Satisfactory****Waste Containers****Satisfactory****Potable Water****Satisfactory****Shade****N/A****Tools & Equipment**


<b>Power Tools</b>		<b>Unsatisfactory</b>
<b>Comment</b>		
<p>An employee has a grinder that does not have its guard equipped. The employee complied to secure the guard.</p>		
<p>Another employee has a grinder that does not have its guard equipped. The employee complied to secure the guard.</p>		

<b>Hand Tools</b>	<b>Satisfactory</b>
-------------------	---------------------

<b>Powder Actuated Tools</b>	<b>N/A</b>
------------------------------	------------

<b>Pneumatic Nailers</b>	<b>Satisfactory</b>
--------------------------	---------------------

<b>Mobile Elevated Work Platforms (MEWP's)</b>	<b>Satisfactory</b>
--	---------------------

<b>Powered Industrial Trucks</b>		<b>Unsatisfactory</b>
<b>Comment</b>		
<p>An employee is operating a forklift while not wearing his seatbelt. The employee complied to secure his seatbelt.</p>		

Another employee is operating a forklift while not wearing his seatbelt. The employee complied to secure his seatbelt.



**Heavy Mobile Equipment (Excavators, Loaders, etc)**

**N/A**

**Cranes**

**Satisfactory**

**Cylinder Storage**

**N/A**

**Ladders**

**Unsatisfactory**

**Comment**

A Trademark employee is using an A-Frame ladder in a closed position. Please ensure employees use ladders in an open, locked, and level position. Alternatively, a lean-safe ladder may be used.



Another Trademark employee is using an A-Frame ladder in a closed position. Please ensure employees use ladders in an open, locked, and level position. Alternatively, a lean-safe ladder may be used.



One more Trademark employee is using an A-Frame ladder in a closed position. Please ensure employees use ladders in an open, locked, and level position. Alternatively, a lean-safe ladder may be used.



A Trademark employee is standing on the 2nd to top step of an A-Frame ladder. Please ensure employees use the approved steps of a ladder.



**Operations**

**Personal Protective Equipment** **Unsatisfactory**

**Comment**

A Trademark employee is using a nail gun while not wearing safety glasses. Please ensure employees wear the required PPE.



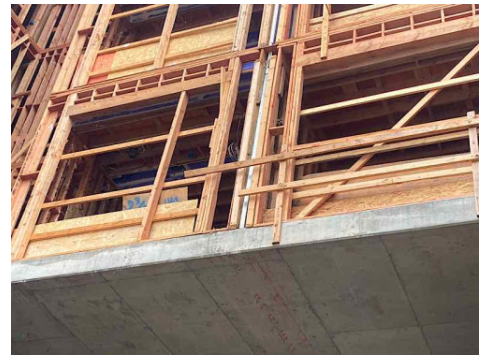
**Trenching & Excavation** **N/A**

**Fall Protection** **Satisfactory**

**Guardrails** **Unsatisfactory**

**Comment**

Guardrails have not been placed on the side of the post which will afford the greatest support and protection. Please ensure horizontal rails are installed on the structure side of vertical posts.



**Floor / Wall Openings**

**Satisfactory**

**Supported Scaffolding**

**Satisfactory**

**Mobile Scaffolding**

**N/A**

**Suspended Scaffolding**

**N/A**

**Confined Spaces**

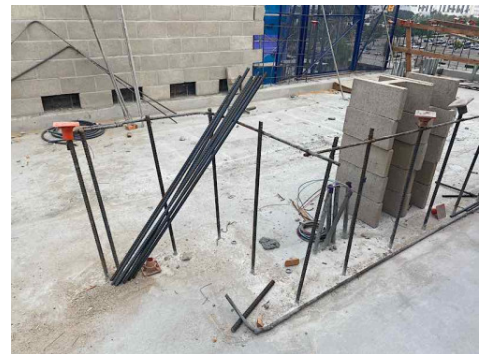
**N/A**

**Impalement Hazards**

**Unsatisfactory**

**Comment**

There were a few areas where rebar was not capped or covered. Please note that a horizontal rebar installed across the top of vertical rebar is not considered impalement protection.



**Traffic Control**

**N/A**

**Roofing Operations**

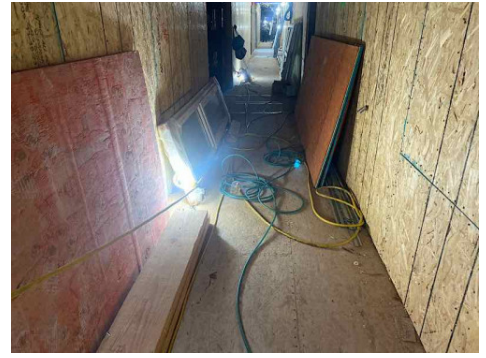
**N/A**

**Housekeeping**

**Unsatisfactory**

**Comment**

Cords and hoses create tripping hazards in a walkway. Please ensure walkways are maintained clear of tripping hazards.



**Demolition**

**N/A**

**Silica Control**

**Satisfactory**

**Rigging Operations**

**N/A**

**Hot Work**

**Satisfactory**

**Electrical Safety**

**Satisfactory**

**Lockout / Tagout**

**N/A**

**Stairways, Ramps, Runways**

**Satisfactory**

**Other Items (that were observed)**

**Unsatisfactory**

**Comment**

There were a few areas that were lacking sufficient illumination. Please ensure employees are provided with sufficient lighting.

