

# SAFETY INSPECTION REPORT

**CONDUCTED FOR:**  
West Builders, Inc.

**PROJECT:**  
Fullerton HUB



**INSPECTION TYPE:**  
General Construction

**INSPECTOR :** JASON CHAVEZ  
**DATE :** AUGUST 20, 2024  
**CITY :** FULLERTON  
**STATE :** CA

Safety Compliance Company is not responsible for unsafe conditions and situations not seen during this inspection. The items listed above represent only what was seen by the Safety Compliance Company Representative at the time of the inspection. Safety Compliance Company is not responsible for any ongoing unsafe condition(s) whether seen or unseen. In addition, Safety Compliance Company does not have the authority or authorization to approve, certify, or warranty any safety equipment or safety device. This agreement also indemnifies Safety Compliance Company of any omission, gross negligence, willful misconduct related to this report. Under Federal, State and Local Law, it is the responsibility of the employer and all subcontractors to mark all hazards with appropriate signs

# SUMMARY OF INSPECTION

<b>53</b> Items Inspected	<b>30</b> Satisfactory	<b>14</b> Unsatisfactory	<b>9</b> N/A
------------------------------	---------------------------	-----------------------------	-----------------

The site was visited for a safety inspection. The contractors on site were observed regarding items including PPE, tools, and equipment and safe practices. Items of concern are noted in this report. The observations were discussed with the project team.

**Contractors Onsite:**

- Tinco
- Trademark
- Guy Yocom
- Rye
- AmPam
- Lighthouse Glass
- Sharpe
- Atlas
- Bali

**Site Specific Activity:**

Note, all trades accessing the scaffold must have a daily inspection of the scaffold. The competent person must make any corrections prior to work commencing.

Trades are engaged in rough in of plumbing and electrical. Wood and metal framing activities are in process. Insulations, drywall hanging, mudding and taping. Straight edge work by framing.

# INSPECTION ITEMS

Documentation	
<b>Site Contact</b>	<b>Satisfactory</b>
<b>Comment</b>	
Project Management Team	-
<b>Safety Program (Including IIPP)</b>	<b>Satisfactory</b>
<b>Comment</b>	

IIPP is available onsite.	-
<b>Heat Illness Prevention Program</b>	<b>Satisfactory</b>
<b>Safety Data Sheets</b>	<b>Satisfactory</b>
<b>Daily Inspections</b>	<b>Satisfactory</b>
<b>Tailgate Meetings</b>	<b>Satisfactory</b>
<b>Comment</b>	
Tailgate meetings are on file.	-
<b>Sub-Contractor Meetings</b>	<b>Satisfactory</b>
<b>OSHA Permits</b>	<b>Satisfactory</b>
<b>Labor Law Postings</b>	<b>Satisfactory</b>
<b>Emergency / Other Postings</b>	<b>Satisfactory</b>
<b>First Aid / CPR Certification</b>	<b>Satisfactory</b>
<b>Emergency Items</b>	
<b>Access / Egress</b>	<b>Satisfactory</b>
<b>Elevator for Hoisting Workers (if needed)</b>	<b>Satisfactory</b>
<b>Comment</b>	
Elevators are in place and operational. Daily inspection is reported.	-
<b>Fire Extinguisher(s)</b>	<b>Satisfactory</b>
<b>First Aid Kit(s)</b>	<b>Satisfactory</b>
<b>Eye Wash Station</b>	<b>N/A</b>

<b>Other Fire Fighting Equipment (If needed)</b>	<b>N/A</b>
--	------------

## General Items

<b>Restrooms</b>	<b>Satisfactory</b>
------------------	---------------------

<b>Hand Washing Stations</b>	<b>Satisfactory</b>
------------------------------	---------------------

<b>Waste Containers</b>	<b>Satisfactory</b>
-------------------------	---------------------


Comment	
Waste containers were in good order.	-

<b>Potable Water</b>	<b>Satisfactory</b>
----------------------	---------------------

<b>Shade</b>	<b>N/A</b>
--------------	------------

## Tools & Equipment

<b>Power Tools</b>	<b>Unsatisfactory</b>
--------------------	-----------------------

Comment	
<p>Sharp has a chop saw with the guard screwed up. The guard must be operational at all times. The workers must remove the screw.</p>	

<b>Hand Tools</b>	<b>Satisfactory</b>
-------------------	---------------------

<b>Powder Actuated Tools</b>	<b>Satisfactory</b>
------------------------------	---------------------

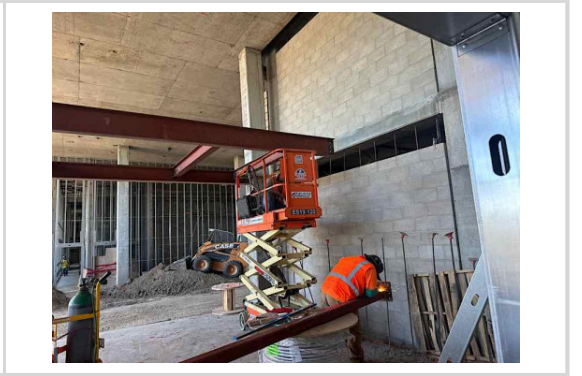
<b>Pneumatic Nailers</b>	<b>Satisfactory</b>
--------------------------	---------------------

Comment	
Nail guns inspected had safety spring.	-

<b>Mobile Elevated Work Platforms (MEWP's)</b>	<b>Unsatisfactory</b>
--	-----------------------

<b>Comment</b>	
----------------	--

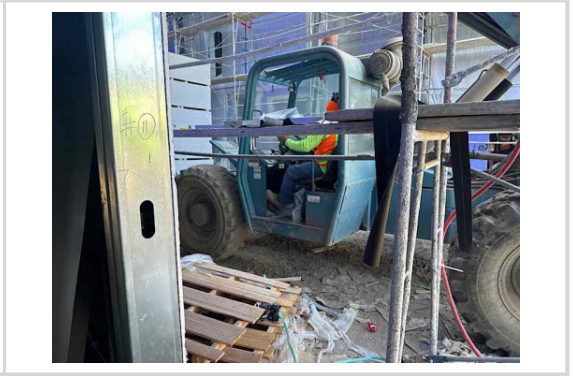
JEM worker did not have safety chains secured. The worker secured the chain immediately. In addition, the workers are using the lift to hoist/support the steel. This is prohibited. The workers complied to use the forklift.



<b>Powered Industrial Trucks</b>	<b>Unsatisfactory</b>
----------------------------------	-----------------------

<b>Comment</b>	
----------------	--

Sharp worker is operating the forklift without his seat belt secured. The worker secured his seat belt immediately.



<b>Heavy Mobile Equipment (Excavators, Loaders, etc)</b>	<b>Satisfactory</b>
--	---------------------

<b>Cranes</b>	<b>N/A</b>
---------------	------------

<b>Cylinder Storage</b>	<b>Satisfactory</b>
-------------------------	---------------------

<b>Ladders</b>	<b>Unsatisfactory</b>
----------------	-----------------------

<b>Comment</b>	
----------------	--

Trademark worker is straddling the top of the A Frame ladder. This is prohibited. The worker was recommended to use a larger ladder.



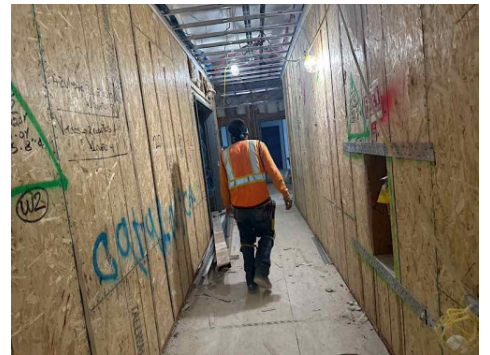
## Operations

### Personal Protective Equipment

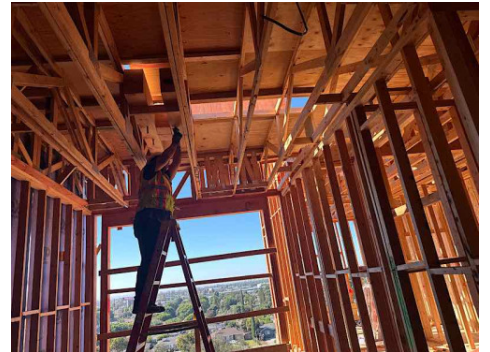
**Unsatisfactory**

#### Comment

Some workers are observed without required PPE including hard hats and safety glasses.



Lynn Safety worker needs safety glasses and complied to don them.



Miller worker is missing his hard hat while working. The worker was reminded and complied to don his hard hat immediately.



### Trenching & Excavation

**Satisfactory**



**Fall Protection** **Unsatisfactory**

**Comment**

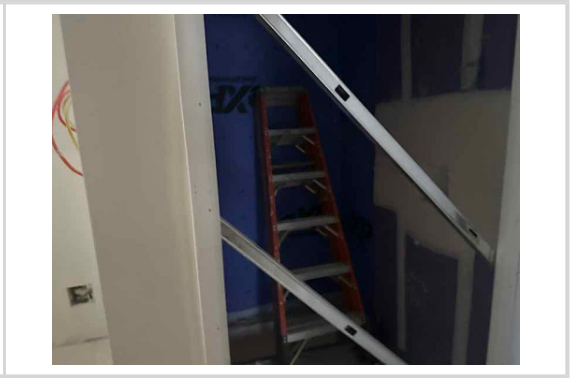
The scaffold section is providing a catch platform for the balcony. However, the platform must have a 2x6 toe board to qualify as fall protection.



**Guardrails** **Unsatisfactory**

**Comment**

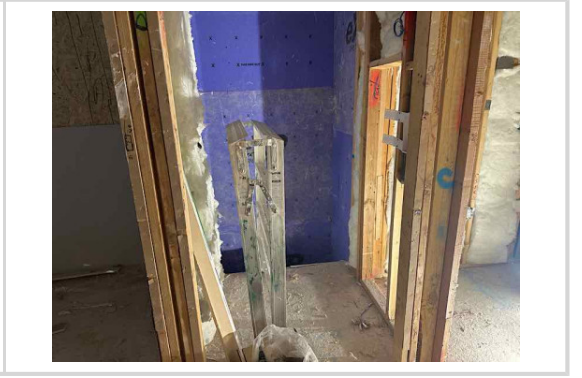
Ladder is observed behind the guard rails in a shaft. Workers must have personal fall protection when exposed to a hole 12" or greater.



Shaft protection has been removed and left loose. The shaft must be protected at all times.



Sharpe workers are working exposed to the open shaft. Fall protection is required. Sharp must have a fall protection plan written and implemented for open shafts. Workers here complied to add guard rails.



Please ensure all window openings on the mezzanine level are protected with guard rails. This opening is unprotected.



**Floor / Wall Openings**

**Unsatisfactory**

**Comment**

Lynn Safety worker on the roof has removed the plywood over the opening. The worker was recommended to return the plywood with a small space for passing materials. The workers complied.



On the roof of building A, a roof opening is missing the cover and is open. Please ensure that all open shafts are covered, secured and marked, Opening, Do Not Remove.



**Supported Scaffolding**

**Unsatisfactory**

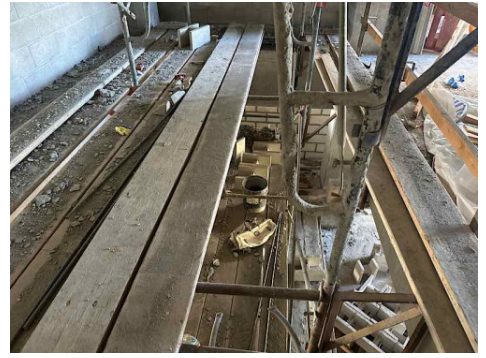
**Comment**

It is observed on the bottom of an end section, the cross brace is damaged and unsecured. All items must be inspected by the contractors using the scaffold and a competent person must make corrections.





Guy Yocom scaffold in stairwell is missing planks with open gaps to the level below. Please ensure all working levels are fully planked.



**Mobile Scaffolding**

**Satisfactory**

**Suspended Scaffolding**

**N/A**

**Confined Spaces**

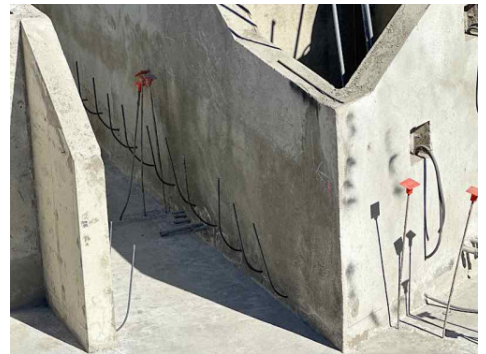
**N/A**

**Impalement Hazards**

**Unsatisfactory**

**Comment**

Guy Yocom has some vertical rebar that must be protected with osha approved caps. Please ensure all vertical rebar is protected.



**Traffic Control**

**Unsatisfactory**

**Comment**

Please ensure all traffic signs are erected and communicate clear directions.



**Roofing Operations** **Satisfactory**

**Housekeeping** **Satisfactory**

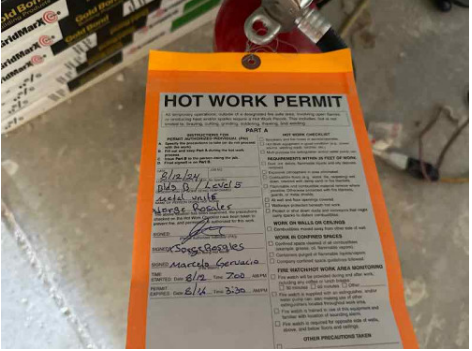
Comment	
Housekeeping is in good order.	-

**Demolition** **N/A**


**Silica Control** **Satisfactory**

**Rigging Operations** **Satisfactory**

**Hot Work** **Unsatisfactory**

Comment	
<p>Sharp has a hot work permit that is expired. Please ensure all hot work permits are up to date.</p>	

**Electrical Safety** **Unsatisfactory**

Comment	
<p>The temporary power cables have damaged insulation. The the temp power must be inspected monthly. Any cables with damaged should be removed or replaced.</p>	

Rye has an electrical cord with damaged insulation. The cord must be removed and replaced. The workers complied to remove the cord immediately.



There are several bulbs missing from light strings. Light strings must be inspected regularly to ensure all bulbs or manufactured caps are in place to eliminate any shock exposures.

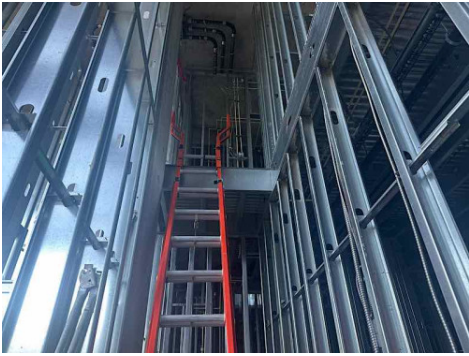


**Lockout / Tagout** **N/A**

**Stairways, Ramps, Runways** **Unsatisfactory**

**Comment**

Floors must have stair ways leading to the floor once walls are erected. Stairs should be installed for the mezzanine level.



<b>Other Items (that were observed)</b>	<b>N/A</b>
---	------------