

# SAFETY INSPECTION REPORT

**CONDUCTED FOR:**  
West Builders, Inc.

**PROJECT:**  
Fullerton HUB



**INSPECTION TYPE:**  
General Construction

**INSPECTOR :** JASON CHAVEZ  
**DATE :** SEPTEMBER 17, 2024  
**CITY :** FULLERTON  
**STATE :** CA

Safety Compliance Company is not responsible for unsafe conditions and situations not seen during this inspection. The items listed above represent only what was seen by the Safety Compliance Company Representative at the time of the inspection. Safety Compliance Company is not responsible for any ongoing unsafe condition(s) whether seen or unseen. In addition, Safety Compliance Company does not have the authority or authorization to approve, certify, or warranty any safety equipment or safety device. This agreement also indemnifies Safety Compliance Company of any omission, gross negligence, willful misconduct related to this report. Under Federal, State and Local Law, it is the responsibility of the employer and all subcontractors to mark all hazards with appropriate signs

# SUMMARY OF INSPECTION

<b>53</b> Items Inspected	<b>31</b> Satisfactory	<b>12</b> Unsatisfactory	<b>10</b> N/A
------------------------------	---------------------------	-----------------------------	------------------

The site was visited for a safety inspection. The contractors on site were observed regarding items including PPE, tools, and equipment and safe practices. Items of concern are noted in this report. The observations were discussed with the project team.

**Contractors Onsite:**

- Tinco
- Trademark
- Guy Yocom
- Rye
- AmPam
- Lighthouse Glass
- Sharpe
- Atlas

**Site Specific Activity:**

Note, all trades accessing the scaffold must have a daily inspection of the scaffold. The competent person must make any corrections prior to work commencing.

Trades are engaged in rough in of plumbing and electrical. Wood and metal framing activities are in process. Insulations, drywall hanging, mudding and taping. Straight edge work by framing. Concrete pour.

# INSPECTION ITEMS

Documentation	
<b>Site Contact</b>	<b>Satisfactory</b>
<b>Comment</b>	
Project Management Team	-
<b>Safety Program (Including IIPP)</b>	<b>Satisfactory</b>
<b>Comment</b>	

IIPP is available onsite.	-
---------------------------	---

<b>Heat Illness Prevention Program</b>	<b>Satisfactory</b>
--	---------------------

<b>Safety Data Sheets</b>	<b>Satisfactory</b>
---------------------------	---------------------

<b>Daily Inspections</b>	<b>Satisfactory</b>
--------------------------	---------------------

<b>Tailgate Meetings</b>	<b>Satisfactory</b>
--------------------------	---------------------

<b>Comment</b>	
Tailgate meetings are on file.	-

<b>Sub-Contractor Meetings</b>	<b>Satisfactory</b>
--------------------------------	---------------------

<b>OSHA Permits</b>	<b>Satisfactory</b>
---------------------	---------------------


<b>Labor Law Postings</b>	<b>Satisfactory</b>
---------------------------	---------------------

<b>Emergency / Other Postings</b>	<b>Satisfactory</b>
-----------------------------------	---------------------

<b>First Aid / CPR Certification</b>	<b>Satisfactory</b>
--------------------------------------	---------------------

## Emergency Items

<b>Access / Egress</b>	<b>Unsatisfactory</b>
------------------------	-----------------------

<b>Comment</b>	
<p>It appears Trademark workers have unplugged temp lighting for power tools in use. However, alternate extensions of power should be used. The workers are working in dark conditions without task lighting and turning off all access lighting in the hallway. Please ensure proper extensions of power are in use.</p>	

<b>Elevator for Hoisting Workers (if needed)</b>	<b>Satisfactory</b>
--	---------------------

<b>Fire Extinguisher(s)</b>	<b>Satisfactory</b>
-----------------------------	---------------------

<b>Comment</b>
----------------

Good job keeping fire extinguishers inspected.



<b>First Aid Kit(s)</b>	<b>Satisfactory</b>
-------------------------	---------------------

<b>Eye Wash Station</b>	<b>N/A</b>
-------------------------	------------

<b>Other Fire Fighting Equipment (If needed)</b>	<b>N/A</b>
--	------------

## General Items

<b>Restrooms</b>	<b>Satisfactory</b>
------------------	---------------------

<b>Hand Washing Stations</b>	<b>Satisfactory</b>
------------------------------	---------------------

<b>Waste Containers</b>	<b>Satisfactory</b>
-------------------------	---------------------

<b>Comment</b>
----------------

Waste containers were in good order.

-

<b>Potable Water</b>	<b>Satisfactory</b>
----------------------	---------------------

<b>Shade</b>	<b>N/A</b>
--------------	------------

## Tools & Equipment

<b>Power Tools</b>	<b>Satisfactory</b>
--------------------	---------------------


<b>Hand Tools</b>	<b>Satisfactory</b>
-------------------	---------------------

<b>Powder Actuated Tools</b>	<b>Satisfactory</b>
------------------------------	---------------------

<b>Pneumatic Nailers</b>	<b>Satisfactory</b>
--------------------------	---------------------

<b>Mobile Elevated Work Platforms (MEWP's)</b>	<b>Satisfactory</b>
--	---------------------

<b>Powered Industrial Trucks</b>	<b>Unsatisfactory</b>
----------------------------------	-----------------------

<b>Comment</b>	
When operating in the public roadway a spotter is required.	
When parking the lift the forks must rest flush on the ground with the mast at a neutral position.	

<b>Heavy Mobile Equipment (Excavators, Loaders, etc)</b>	<b>Satisfactory</b>
--	---------------------

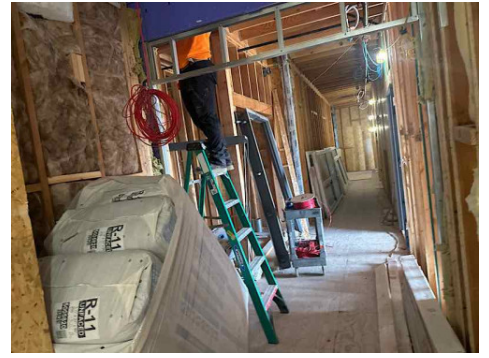
<b>Cranes</b>	<b>N/A</b>
---------------	------------

<b>Cylinder Storage</b>	<b>Satisfactory</b>
-------------------------	---------------------

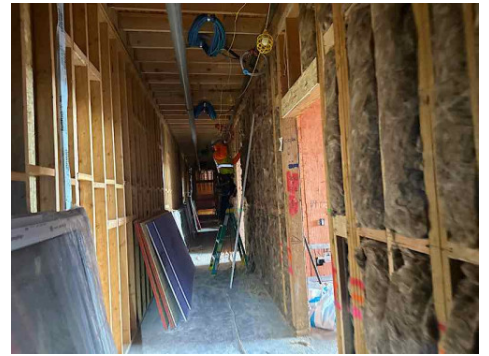
<b>Ladders</b>	<b>Unsatisfactory</b>
----------------	-----------------------

<b>Comment</b>
----------------

ACSI worker is standing on the second to last rung of the A frame. This is prohibited. In addition the ladder must have legible labels. The worker complied to work from the next step below.



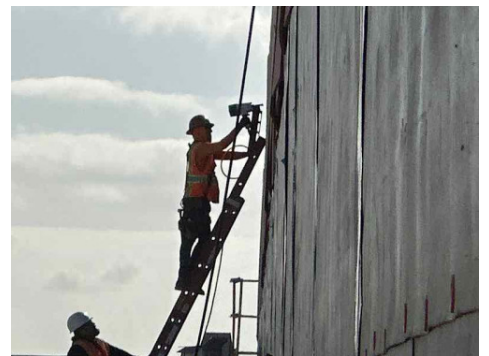
Trademark worker is using the A frame ladder as a leaned. This is prohibited for this ladder. Please ensure all workers are trained regarding proper ladder usage and regulations are followed. The worker complied to open the ladder.



Trademark worker has a leaned A Frame ladder. Please ensure the ladder opened and locked when in use. A LeanSafe ladder may be used in this application.

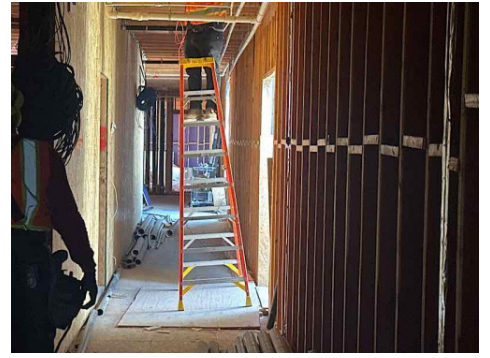


Trademark worker is observed climbing the ladder while holding the nail gun. This is prohibited. Three points of contact must be maintained while ascending and descending the ladder. Reported to his forewoman.





Rye worker is standing on an unlevelled A frame ladder. The A frame must be leveled before workers engage it for use. The worker complied to place it on the level floor.



## Operations

### Personal Protective Equipment

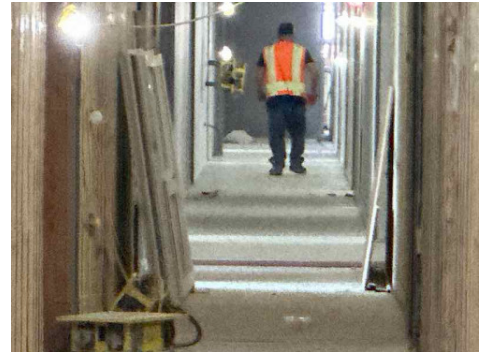
**Unsatisfactory**

#### Comment

Sharp worker does not have ansi rated safety glasses. Please ensure all workers engaged in cutting activities have proper PPE.



Some workers are observed traversing the site without required PPE including hard hats. Please ensure all PPE requirements are being followed.



### Trenching & Excavation

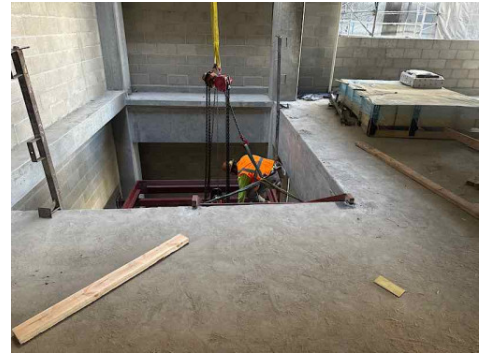
**Satisfactory**

### Fall Protection

**Unsatisfactory**

#### Comment

JEM has removed guard rails from the stairway where stairs are being erected. The access way should maintain guard rails. The workers erected guard rails immediately.



Guy Yocom workers are exposed to fall hazard wiring without guard rails. The work consists of finishing block columns. The guard rails must be in place where workers are exposed and no work is accomplished. The workers complied to erect guard rails immediately.



**Guardrails**

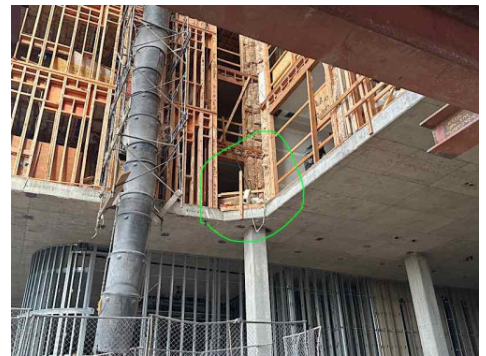
**Unsatisfactory**

**Comment**

Guard rails have been removed. It is important to note the scaffold does not count as a catch platform as it is greater than 24" from the fall hazard and does not have an outside toe board. Please ensure any contractors who remove guard rails must return them.




A top guard rail is missing above the trash dump. Please ensure all guard rails are in place at all times.

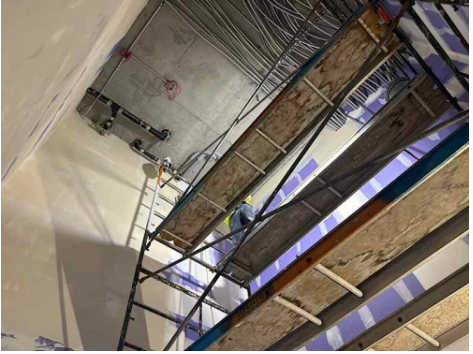



**Floor / Wall Openings**

**Satisfactory**




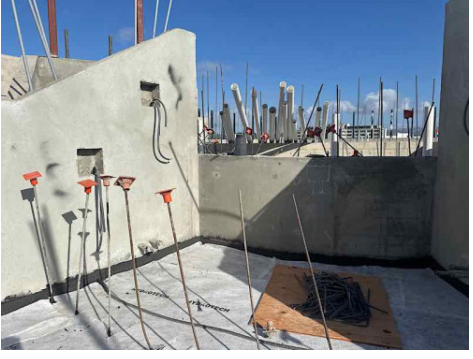
<b>Supported Scaffolding</b>		<b>Unsatisfactory</b>
<b>Comment</b>		
<p>Please ensure all scaffold sections above structure entrances are equipped with a toe board.</p>		

<b>Mobile Scaffolding</b>		<b>Unsatisfactory</b>
<b>Comment</b>		
<p>Sharp worker is working on a level that is not fully planked. The ladder should be used to access the working level. In addition the upper level must have a guard rail. Please ensure all working levels are fully planked.</p>		
<p>Sharp has a plank on top of a self supported ladder to the top of a guard rail. This is prohibited. Planks may not be extended from ladders. Please ensure proper scaffold frames are used as well as the minimum width of 20" for a scaffold platform is used.</p>		

<b>Suspended Scaffolding</b>	<b>N/A</b>
------------------------------	------------

<b>Confined Spaces</b>	<b>N/A</b>
------------------------	------------

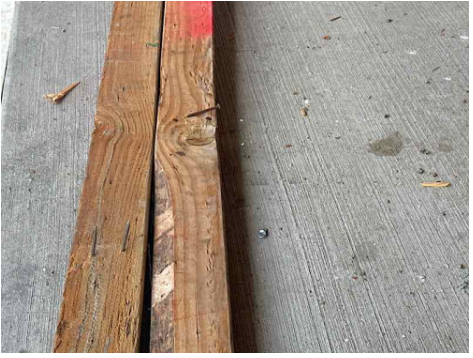
<b>Impalement Hazards</b>		<b>Unsatisfactory</b>
<b>Comment</b>		

<p>Vertical rebar that must be protected with osha approved caps. Please ensure all vertical rebar is protected.</p>	
<p>Caps need to be maintained at all times by all trades.</p>	

<p><b>Traffic Control</b></p>	<p><b>Satisfactory</b></p>
-------------------------------	----------------------------

<p><b>Roofing Operations</b></p>	<p><b>Satisfactory</b></p>
----------------------------------	----------------------------

<p><b>Housekeeping</b></p>	<p><b>Unsatisfactory</b></p>
----------------------------	------------------------------

<p><b>Comment</b></p>	
<p>Housekeeping is in good order throughout the site. However guard rails that have been removed have nails sticking up. Please ensure all nails are removed or bent down.</p>	

<p><b>Demolition</b></p>	<p><b>N/A</b></p>
--------------------------	-------------------

<p><b>Silica Control</b></p>	<p><b>N/A</b></p>
------------------------------	-------------------

<p><b>Rigging Operations</b></p>	<p><b>Satisfactory</b></p>
----------------------------------	----------------------------

**Hot Work**

**Unsatisfactory**

**Comment**

Please ensure hot work permits are filled out and keep up to date. Sharp



Please ensure hot work permits are filled out and keep up to date. The permit is expired. Sharp



Please ensure hot work permits are filled out and keep up to date. The permit is expired. Atlas

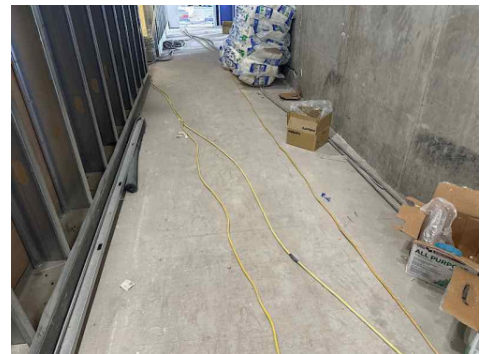


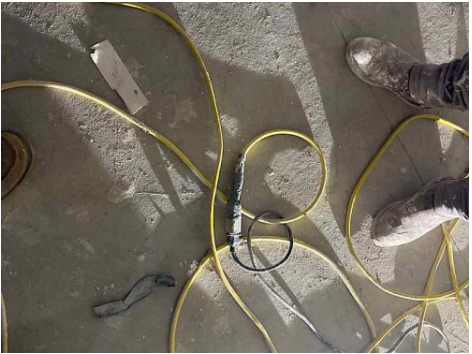
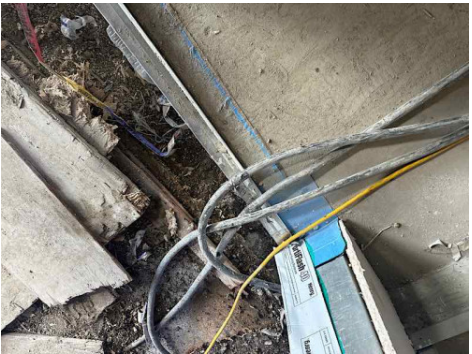

**Electrical Safety**

**Unsatisfactory**

**Comment**

An electrical cord with damaged insulation is observed in the hallway on the third level. The cord must be removed and replaced. Please ensure cords are inspected prior to use. Sharp



<p>Same cord.</p>	
<p>Temporary leads have been fixed with electrical tape. Please ensure these are replaced as electrical tape is not approved for temporary extensions of power. Ground level near the elevator.</p>	
<p>The temporary cord has been damaged. Workers transporting materials must be careful not to damage temporary power extension cords. Near unit 433.</p>	

<p><b>Lockout / Tagout</b></p>	<p><b>N/A</b></p>
--------------------------------	-------------------

<p><b>Stairways, Ramps, Runways</b></p>	<p><b>Satisfactory</b></p>
---	----------------------------

<p><b>Other Items (that were observed)</b></p>	<p><b>N/A</b></p>
--	-------------------