

SAFETY INSPECTION REPORT

CONDUCTED FOR:
West Builders, Inc.

PROJECT:
Fullerton HUB



INSPECTION TYPE:
General Construction

INSPECTOR : JASON CHAVEZ
DATE : OCTOBER 10, 2024
CITY : FULLERTON
STATE : CA

Safety Compliance Company is not responsible for unsafe conditions and situations not seen during this inspection. The items listed above represent only what was seen by the Safety Compliance Company Representative at the time of the inspection. Safety Compliance Company is not responsible for any ongoing unsafe condition(s) whether seen or unseen. In addition, Safety Compliance Company does not have the authority or authorization to approve, certify, or warranty any safety equipment or safety device. This agreement also indemnifies Safety Compliance Company of any omission, gross negligence, willful misconduct related to this report. Under Federal, State and Local Law, it is the responsibility of the employer and all subcontractors to mark all hazards with appropriate signs

SUMMARY OF INSPECTION

53 Items Inspected	32 Satisfactory	8 Unsatisfactory	13 N/A
------------------------------	---------------------------	----------------------------	------------------

The site was visited for a safety inspection. The contractors on site were observed regarding items including PPE, tools, and equipment and safe practices. Items of concern are noted in this report. The observations were discussed with the project team.

Contractors Onsite:

- Tinco
- Trademark
- Guy Yocom
- Rye
- AmPam
- Lighthouse Glass
- Sharpe
- Atlas

Site Specific Activity:

Note, all trades accessing the scaffold must have a daily inspection of the scaffold. The competent person must make any corrections prior to work commencing.

Trades are engaged in rough in of plumbing and electrical. Wood and metal framing activities are in process. Insulations, drywall hanging, mudding and taping. Straight edge work by framing. Water proofing. Roofing activities.

INSPECTION ITEMS

Documentation	
Site Contact	Satisfactory
Comment	
Project Management Team	-
Safety Program (Including IIPP)	Satisfactory

Comment	
IIPP is available onsite.	-

Heat Illness Prevention Program	Satisfactory
----------------------------------------	---------------------

Safety Data Sheets	Satisfactory
---------------------------	---------------------

Daily Inspections	Satisfactory
--------------------------	---------------------

Tailgate Meetings	Satisfactory
--------------------------	---------------------

Comment	
Tailgate meetings are on file.	-

Sub-Contractor Meetings	Satisfactory
--------------------------------	---------------------

OSHA Permits	Satisfactory
---------------------	---------------------


Labor Law Postings	Satisfactory
---------------------------	---------------------

Emergency / Other Postings	Satisfactory
-----------------------------------	---------------------


First Aid / CPR Certification	Satisfactory
--------------------------------------	---------------------

Emergency Items

Access / Egress	Unsatisfactory
------------------------	-----------------------

Comment	
<p>Lights are out in the east stairwell. Please ensure access lighting is properly maintained. In another part of the building, Sharp workers moving a drywall load struck the light string and caused the lights to go out. The workers were reminded to reconnect the lights or report it immediately to the electrician. The workers restored the lights. All contractors should be reminded to maintain lighting.</p>	

Elevator for Hoisting Workers (if needed)	Satisfactory
Comment	
Inspection is up to date.	-

Fire Extinguisher(s)	Unsatisfactory
Comment	
<p>Most fire extinguishers are observed. However in the daily inspection the fire extinguishers should be verified. Here an extinguisher is observed to be missing a gauge abs pin. Please ensure all fire extinguishers are inspected and any deficiencies replaced.</p>	

First Aid Kit(s)	Satisfactory
-------------------------	---------------------

Eye Wash Station	N/A
-------------------------	------------

Other Fire Fighting Equipment (If needed)	N/A
--------------------------------------------------	------------

General Items

Restrooms	Satisfactory
------------------	---------------------

Hand Washing Stations	Satisfactory
------------------------------	---------------------

Waste Containers	Satisfactory
Comment	
Waste containers were in good order.	-

Potable Water	Satisfactory
----------------------	---------------------

Shade	N/A
--------------	------------

Tools & Equipment

Power Tools

Satisfactory

Hand Tools

Satisfactory

Powder Actuated Tools

Satisfactory

Pneumatic Nailers

Satisfactory

Mobile Elevated Work Platforms (MEWP's)

Satisfactory

Powered Industrial Trucks

Satisfactory

Heavy Mobile Equipment (Excavators, Loaders, etc)

N/A

Cranes

N/A

Cylinder Storage

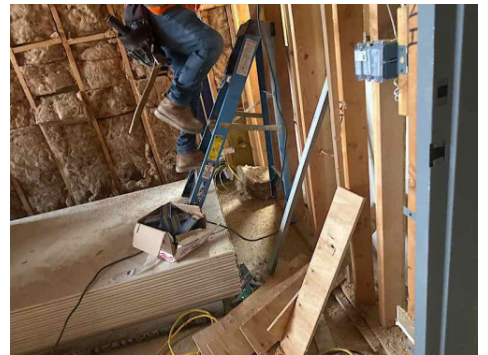
Satisfactory

Ladders

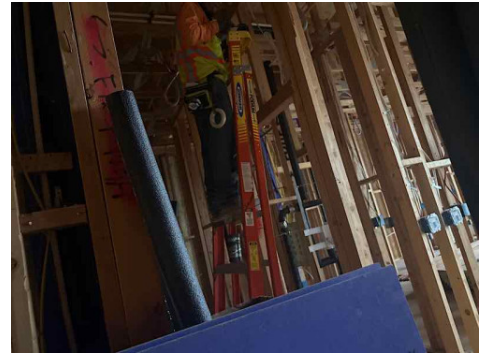
Unsatisfactory

Comment

Trademark worker is standing on a "leaned" A frame ladder. The front legs are suspended. The worker must have the ladder supported on a level surface. The worker was notified of the violation.



AmPam worker is using a leaned A frame ladder. This is prohibited. The ladder must be opened and locked in place. The worker complied to open the ladder.



Operations

Personal Protective Equipment

Satisfactory

Comment

PPE has improved onsite. Great job!

-

Trenching & Excavation

N/A

Fall Protection

Unsatisfactory

Comment

Triton worker is observed climbing onto the scaffold from the roof over the parapet wall. This is prohibited. The worker should access the scaffold from approved access points or the ladder. Discussed with the worker.

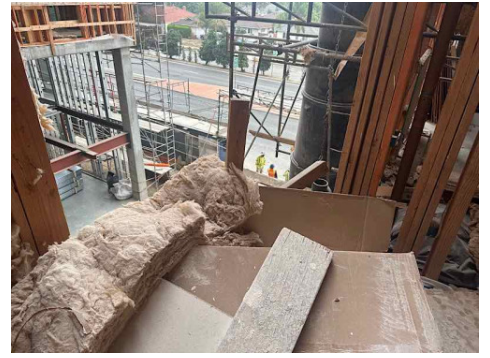


Guardrails

Unsatisfactory

Comment

The top rail from the trash toss area is missing. Please ensure the top rail is replaced and a clear area for access is maintained for a worker to be near the guard rail edge to throw trash over.



Floor / Wall Openings

Satisfactory

Supported Scaffolding

Unsatisfactory

Comment

Please verify the scaffold is inspected daily by each trade. Documentation of daily inspections should be maintained.



Mobile Scaffolding

N/A

Suspended Scaffolding

N/A

Confined Spaces

N/A

Impalement Hazards

Unsatisfactory

Comment

Vertical rebar's are observed missing caps. Several workers were observed walking by the rebar without picking up the caps. All workers should maintain caps. High traffic areas may utilize troughs.



Traffic Control

Satisfactory

Roofing Operations

Satisfactory

Housekeeping

Satisfactory

Comment

Hallways, aisle ways and contractor debris is being cleaned up well. Good housekeeping is being maintained.

-

Demolition

N/A

Silica Control

N/A

Rigging Operations

Satisfactory

Hot Work

Satisfactory

Electrical Safety

Unsatisfactory

Comment

Several bulbs are missing from sockets. Here a wire is protruding from the socket. Please ensure all temporary lights are inspected and maintained.



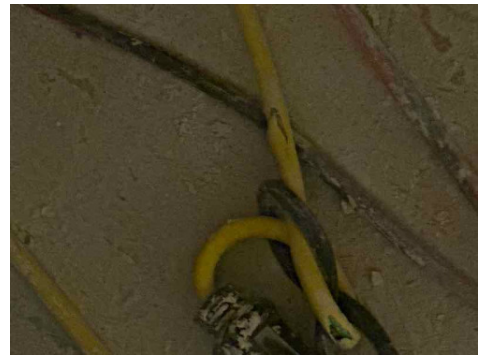
Here the entire socket is missing and the conductive bottom is exposed.



Missing bulb. Cord is hanging in the entrance to the stairwell.






Sharp has an extension cords with broken insulation. All insulation must be in tact and cords double insulated. The worker was notified and complied to remove the cord.



Roof contractor has an extension cords with broken insulation. All insulation must be in tact and cords double insulated. The worker was notified and complied to remove the cord.



<p>Temp cable is becoming damaged from being pulled on.</p>	
<p>Electrical cords should not be suspended on conductive material such as tie wire or nails. They may be suspended from zip ties or something non conductive.</p>	
<p>Balonne cords on the ground level are observed with damaged insulation. These should be removed and protected.</p>	

<p>Lockout / Tagout</p>	<p>N/A</p>
<p>Stairways, Ramps, Runways</p>	<p>Satisfactory</p>
<p>Other Items (that were observed)</p>	<p>N/A</p>