

SAFETY INSPECTION REPORT

CONDUCTED FOR:
West Builders, Inc.

PROJECT:
Fullerton HUB



INSPECTION TYPE:
General Construction

INSPECTOR : JASON CHAVEZ
DATE : NOVEMBER 27, 2024
CITY : FULLERTON
STATE : CA

Safety Compliance Company is not responsible for unsafe conditions and situations not seen during this inspection. The items listed above represent only what was seen by the Safety Compliance Company Representative at the time of the inspection. Safety Compliance Company is not responsible for any ongoing unsafe condition(s) whether seen or unseen. In addition, Safety Compliance Company does not have the authority or authorization to approve, certify, or warranty any safety equipment or safety device. This agreement also indemnifies Safety Compliance Company of any omission, gross negligence, willful misconduct related to this report. Under Federal, State and Local Law, it is the responsibility of the employer and all subcontractors to mark all hazards with appropriate signs

SUMMARY OF INSPECTION

53 Items Inspected	37 Satisfactory	3 Unsatisfactory	13 N/A
------------------------------	---------------------------	----------------------------	------------------

The site was visited for a safety inspection. The contractors on site were observed regarding items including PPE, tools, and equipment and safe practices. Items of concern are noted in this report. The observations were discussed with the project team.

Contractors Onsite:

- Tinco
- Trademark
- Rye
- AmPam
- Lighthouse Glass
- Sharpe
- Atlas
- Hale Glass

Site Specific Activity:

Note, all trades accessing the scaffold must have a daily inspection of the scaffold. The competent person must make any corrections prior to work commencing.

Trades are engaged in rough in of plumbing and electrical. Wood and metal framing activities are in process. Insulations, drywall hanging, mudding and taping. Installing foam, plaster. Underground trenching.

INSPECTION ITEMS

Documentation	
Site Contact	Satisfactory
Comment	
Project Management Team	-
Safety Program (Including IIPP)	Satisfactory
Comment	
IIPP is available onsite.	-

Heat Illness Prevention Program	Satisfactory
--	---------------------

Safety Data Sheets	Satisfactory
---------------------------	---------------------

Daily Inspections	Satisfactory
--------------------------	---------------------

Tailgate Meetings	Satisfactory
--------------------------	---------------------

Comment	
Tailgate meetings are on file.	-

Sub-Contractor Meetings	Satisfactory
--------------------------------	---------------------

OSHA Permits	Satisfactory
---------------------	---------------------

Labor Law Postings	Satisfactory
---------------------------	---------------------

Emergency / Other Postings	Satisfactory
-----------------------------------	---------------------

First Aid / CPR Certification	Satisfactory
--------------------------------------	---------------------

Emergency Items

Access / Egress	Satisfactory
------------------------	---------------------

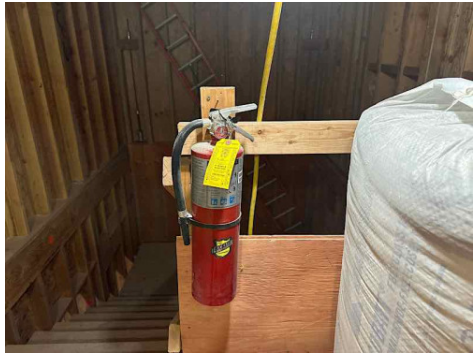
Elevator for Hoisting Workers (if needed)	Satisfactory
--	---------------------

Comment	
Inspection is up to date.	-

Fire Extinguisher(s)	Satisfactory
-----------------------------	---------------------

Comment	
----------------	--

Fire extinguishers are observed posted on the east stairway.



First Aid Kit(s) **Satisfactory**

Eye Wash Station **N/A**

Other Fire Fighting Equipment (If needed) **N/A**

General Items

Restrooms **Satisfactory**

Hand Washing Stations **Satisfactory**

Waste Containers **Satisfactory**

Comment

Waste containers were in good order. -

Potable Water **Satisfactory**

Shade **N/A**

Tools & Equipment

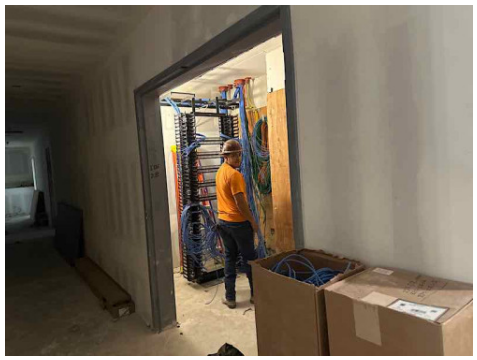
Power Tools **Satisfactory**

Hand Tools **Satisfactory**

Powder Actuated Tools **Satisfactory**

Pneumatic Nailers	Satisfactory
Mobile Elevated Work Platforms (MEWP's)	Satisfactory
Powered Industrial Trucks	Satisfactory
Heavy Mobile Equipment (Excavators, Loaders, etc)	N/A
Cranes	N/A
Cylinder Storage	Satisfactory
Ladders	Satisfactory

Operations

Personal Protective Equipment	Satisfactory
Comment	
Overall workers donned required PPE.	

Trenching & Excavation	N/A
Fall Protection	Satisfactory
Guardrails	Unsatisfactory
Comment	

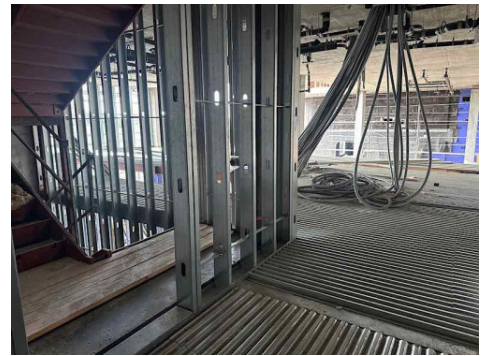
Balconies must have guard rails. The scaffold does not qualify as a catch platform. Please ensure guard rails are maintained on balconies where necessary. Or catch platforms must be equipped with a 2x6 toe board.



A window opening in 249 is observed with only one rail. Please ensure standard rails are setup at 42/21”.



The mezzanine section where decking is not completed (building D) should be closed off at the stair well or guard rails should be erected. No contractors may work in the area without personal fall protection.



Please ensure the broken guard rail is fixed.



Floor / Wall Openings

Satisfactory

Supported Scaffolding

Unsatisfactory

Comment

The scaffold section is missing guard rails. The ladder section should be equipped with guard rails. The erector complied to add railings throughout.



Mobile Scaffolding

N/A

Suspended Scaffolding

N/A

Confined Spaces

N/A

Impalement Hazards

Satisfactory

Traffic Control

Satisfactory

Roofing Operations

N/A

Housekeeping

Satisfactory

Comment

Housekeeping is in good order.



Demolition

N/A

Silica Control

Satisfactory

Rigging Operations

Satisfactory

Hot Work **Satisfactory**

Electrical Safety **Unsatisfactory**

Comment

Bulbs are missing from some light strings. Most lights are in place however please ensure these are inspected and missing bulbs are covered or replaced.



Damaged insulation is observed on the light string extension cord. Please ensure temporary light strings are inspected.



Lights are not powered near the hallway of 248. Please ensure all contractors maintain temporary lights.



Lockout / Tagout **N/A**

Stairways, Ramps, Runways **Satisfactory**

Other Items (that were observed) **N/A**