

SAFETY INSPECTION REPORT

CONDUCTED FOR:
West Builders, Inc.

PROJECT:
Fullerton HUB



INSPECTION TYPE:
General Construction

INSPECTOR : JASON CHAVEZ
DATE : DECEMBER 04, 2024
CITY : FULLERTON
STATE : CA

Safety Compliance Company is not responsible for unsafe conditions and situations not seen during this inspection. The items listed above represent only what was seen by the Safety Compliance Company Representative at the time of the inspection. Safety Compliance Company is not responsible for any ongoing unsafe condition(s) whether seen or unseen. In addition, Safety Compliance Company does not have the authority or authorization to approve, certify, or warranty any safety equipment or safety device. This agreement also indemnifies Safety Compliance Company of any omission, gross negligence, willful misconduct related to this report. Under Federal, State and Local Law, it is the responsibility of the employer and all subcontractors to mark all hazards with appropriate signs

SUMMARY OF INSPECTION

53 Items Inspected	35 Satisfactory	8 Unsatisfactory	10 N/A
------------------------------	---------------------------	----------------------------	------------------

The site was visited for a safety inspection. The contractors on site were observed regarding items including PPE, tools, and equipment and safe practices. Items of concern are noted in this report. The observations were discussed with the project team.

Contractors Onsite:

- Tinco
- Trademark
- Rye
- AmPam
- Lighthouse Glass
- Sharpe
- Atlas
- Hale Glass
- Bali

Site Specific Activity:

Note, all trades accessing the scaffold must have a daily inspection of the scaffold. The competent person must make any corrections prior to work commencing.

Trades are engaged in rough in of plumbing and electrical. Wood and metal framing activities are in process. Insulations, drywall hanging, mudding and taping. Installing foam, plaster. Underground trenching.

INSPECTION ITEMS

Documentation	
Site Contact	Satisfactory
Comment	
Project Management Team	-
Safety Program (Including IIPP)	Satisfactory
Comment	

IIPP is available onsite.	-
---------------------------	---

Heat Illness Prevention Program	Satisfactory
--	---------------------

Safety Data Sheets	Satisfactory
---------------------------	---------------------

Daily Inspections	Satisfactory
--------------------------	---------------------

Tailgate Meetings	Satisfactory
--------------------------	---------------------

Comment	
----------------	--

Tailgate meetings are on file.	-
--------------------------------	---

Sub-Contractor Meetings	Satisfactory
--------------------------------	---------------------

OSHA Permits	Satisfactory
---------------------	---------------------

Labor Law Postings	Satisfactory
---------------------------	---------------------

Emergency / Other Postings	Satisfactory
-----------------------------------	---------------------

First Aid / CPR Certification	Satisfactory
--------------------------------------	---------------------

Emergency Items

Access / Egress	Satisfactory
------------------------	---------------------

Elevator for Hoisting Workers (if needed)	Satisfactory
--	---------------------

Comment	
----------------	--

Inspection is up to date.	-
---------------------------	---

Fire Extinguisher(s)	Satisfactory
-----------------------------	---------------------

First Aid Kit(s)	Satisfactory
-------------------------	---------------------

Eye Wash Station	N/A
-------------------------	------------

Other Fire Fighting Equipment (If needed)	N/A
---	-----

General Items

Restrooms	Satisfactory
-----------	--------------

Hand Washing Stations	Satisfactory
-----------------------	--------------

Waste Containers	Satisfactory
------------------	--------------


Comment	
Waste containers were in good order.	-

Potable Water	Satisfactory
---------------	--------------

Shade	N/A
-------	-----

Tools & Equipment

Power Tools	Unsatisfactory
-------------	----------------

Comment	
<p>Sharpe has a grinder with the guard removed. All manufacturer's safety elements must be in place at all times. The worker replaced the guard immediately.</p>	

Hand Tools	Satisfactory
------------	--------------

Powder Actuated Tools	Satisfactory
-----------------------	--------------

Pneumatic Nailers	Satisfactory
-------------------	--------------

Mobile Elevated Work Platforms (MEWP's)	Unsatisfactory
---	----------------

Comment

Guy Yocom workers are operating the lift without the chain secured. The chain must be secured to serve as required fall protection. Please ensure all workers are certified for equipment being operated. The workers secured the chain immediately.



Powered Industrial Trucks

Satisfactory

Heavy Mobile Equipment (Excavators, Loaders, etc)

Satisfactory

Cranes

N/A

Cylinder Storage

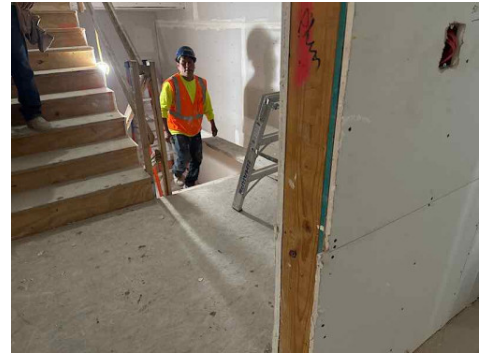
Satisfactory

Ladders

Unsatisfactory

Comment

Sharpe has extended a plank from a ladder as a scaffold platform. This is prohibited. The plank must be setup on manufactured scaffolding frames or the worker may use the ladder in the proper way. However planks may not extend from ladders. The workers complied to remove the plank.



Operations

Personal Protective Equipment

Unsatisfactory

Comment

Some workers are observed without required PPE. While mixing eye protection should be donned. Also, when coming out of a unit that does not have over head hazards, hard hats must be donned. The worker was reminded of the PPE requirements.



Trenching & Excavation

Satisfactory

Comment

Good delineations were observed around open trenches.



Fall Protection

Unsatisfactory

Comment

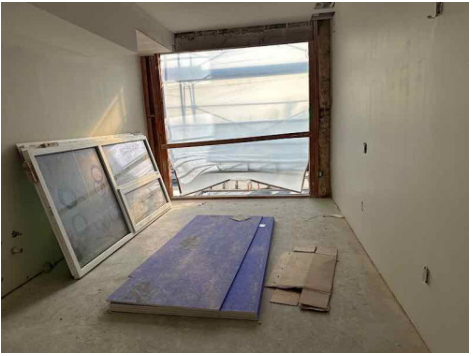
The scaffold must have a minimum of a 2x6 toeboards on the outside edge to be considered a catch platform providing fall protection. Please ensure all required elements are equipped on the scaffold .



Guardrails

Unsatisfactory

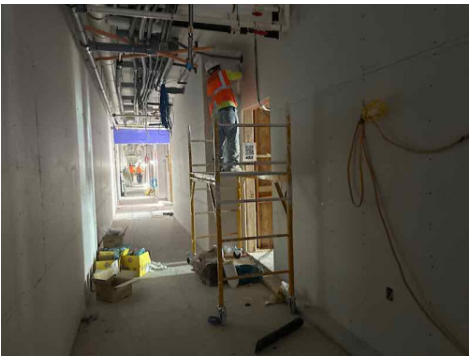
Comment

<p>A window opening in 249 is observed with only one rail. Please ensure standard rails are setup at 42/21”.</p>	
<p>A window opening in 608 is observed with only one rail. Please ensure standard rails are setup at 42/21”.</p>	

<p>Floor / Wall Openings</p>	<p>Satisfactory</p>
-------------------------------------	----------------------------

<p>Supported Scaffolding</p>	<p>Satisfactory</p>
-------------------------------------	----------------------------

<p>Mobile Scaffolding</p>	<p>Unsatisfactory</p>
----------------------------------	------------------------------

<p>Comment</p>	
<p>Sharpe worker is working on a platform above 4’ without the wheels locked. The wheels must be locked when the platform is above 4’. The worker complied to lock the wheels.</p>	

<p>Suspended Scaffolding</p>	<p>N/A</p>
-------------------------------------	-------------------

<p>Confined Spaces</p>	<p>N/A</p>
-------------------------------	-------------------


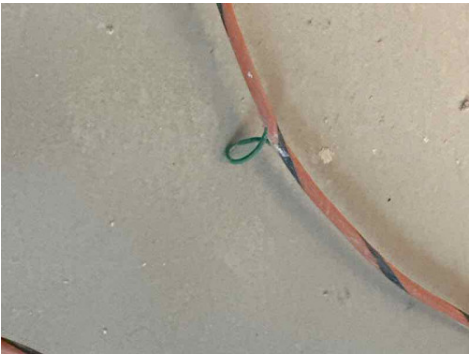

<p>Impalement Hazards</p>	<p>Satisfactory</p>
----------------------------------	----------------------------

Traffic Control	Satisfactory
Roofing Operations	N/A
Housekeeping	Satisfactory
Demolition	N/A
Silica Control	Satisfactory
Rigging Operations	Satisfactory
Hot Work	Satisfactory
Electrical Safety	Unsatisfactory

Comment

Bulbs are missing from some light strings. Most lights are in place however please ensure these are inspected and missing bulbs are covered or replaced.



<p>One light is missing and the cord is damaged. This cord should be replaced.</p>	
<p>Sharp has a few cords that are damaged. Please ensure all cords are inspected and removed from service.</p>	
	

Lockout / Tagout	N/A
-------------------------	------------

Stairways, Ramps, Runways	Satisfactory
----------------------------------	---------------------

Other Items (that were observed)	N/A
---	------------