

SAFETY INSPECTION REPORT

CONDUCTED FOR:
West Builders, Inc.

PROJECT:
Fullerton HUB



INSPECTION TYPE:
General Construction

INSPECTOR : JASON CHAVEZ
DATE : DECEMBER 11, 2024
CITY : FULLERTON
STATE : CA

Safety Compliance Company is not responsible for unsafe conditions and situations not seen during this inspection. The items listed above represent only what was seen by the Safety Compliance Company Representative at the time of the inspection. Safety Compliance Company is not responsible for any ongoing unsafe condition(s) whether seen or unseen. In addition, Safety Compliance Company does not have the authority or authorization to approve, certify, or warranty any safety equipment or safety device. This agreement also indemnifies Safety Compliance Company of any omission, gross negligence, willful misconduct related to this report. Under Federal, State and Local Law, it is the responsibility of the employer and all subcontractors to mark all hazards with appropriate signs

SUMMARY OF INSPECTION

54 Items Inspected	37 Satisfactory	7 Unsatisfactory	10 N/A
------------------------------	---------------------------	----------------------------	------------------

The site was visited for a safety inspection. The contractors on site were observed regarding items including PPE, tools, and equipment and safe practices. Items of concern are noted in this report. The observations were discussed with the project team.

Contractors Onsite:

- Tinco
- Trademark
- Rye
- AmPam
- Lighthouse Glass
- Sharpe
- Atlas
- Hale Glass
- Bali

Site Specific Activity:

Note, all trades accessing the scaffold must have a daily inspection of the scaffold. The competent person must make any corrections prior to work commencing.

Trades are engaged in rough in of plumbing and electrical. Wood and metal framing activities are in process. Insulations, drywall hanging, mudding and taping. Erecting steel Underground trenching.

INSPECTION ITEMS

Documentation	
Site Contact	Satisfactory
Comment	
Project Management Team	-
Safety Program (Including IIPP)	
Satisfactory	
Comment	

IIPP is available onsite.	-
---------------------------	---

Heat Illness Prevention Program	Satisfactory
--	---------------------

Safety Data Sheets	Satisfactory
---------------------------	---------------------

Daily Inspections	Satisfactory
--------------------------	---------------------

Tailgate Meetings	Satisfactory
--------------------------	---------------------

Comment	
Tailgate meetings are on file.	-

Sub-Contractor Meetings	Satisfactory
--------------------------------	---------------------

OSHA Permits	Satisfactory
---------------------	---------------------

Labor Law Postings	Satisfactory
---------------------------	---------------------

Emergency / Other Postings	Satisfactory
-----------------------------------	---------------------

First Aid / CPR Certification	Satisfactory
--------------------------------------	---------------------

Emergency Items

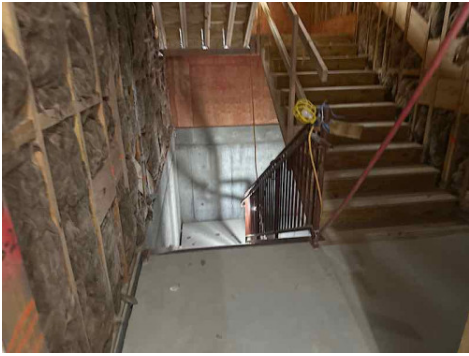
Access / Egress	Unsatisfactory
------------------------	-----------------------

Comment	
----------------	--

The exit door at the bottom of the east stairs from the structure is locked from the outside. This should be open while workers may use this as an exit.



If the door must be secured the stairway should be closed and signage should be posted.



Elevator for Hoisting Workers (if needed)	Satisfactory
Comment	
Inspection is up to date.	-

Fire Extinguisher(s)	Satisfactory
-----------------------------	---------------------

First Aid Kit(s)	Satisfactory
-------------------------	---------------------

Eye Wash Station	N/A
-------------------------	------------

Personnel Hoist	Satisfactory
------------------------	---------------------

Other Fire Fighting Equipment (If needed)	N/A
--	------------

General Items

Restrooms	Satisfactory
------------------	---------------------

Hand Washing Stations	Satisfactory
------------------------------	---------------------

Waste Containers	Satisfactory
Comment	
Waste containers were in good order.	-

Potable Water	Satisfactory
----------------------	---------------------

Shade	N/A
--------------	------------

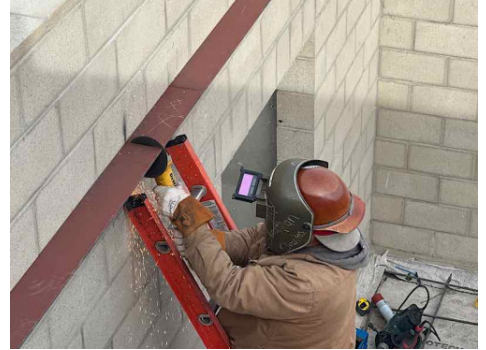
Tools & Equipment

Power Tools

Unsatisfactory

Comment

Steel worker has a grinder with the guard removed. All manufacturer's safety elements must be in place at all times. The worker replaced the guard immediately.



Hand Tools

Satisfactory

Powder Actuated Tools

Satisfactory

Pneumatic Nailers

Satisfactory

Mobile Elevated Work Platforms (MEWP's)

Satisfactory

Powered Industrial Trucks

Satisfactory

Heavy Mobile Equipment (Excavators, Loaders, etc)

Satisfactory

Cranes

N/A

Cylinder Storage

Satisfactory

Ladders

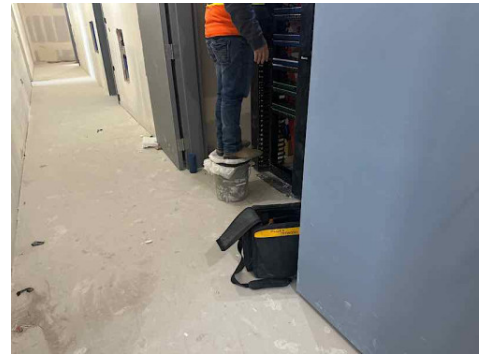
Unsatisfactory

Comment

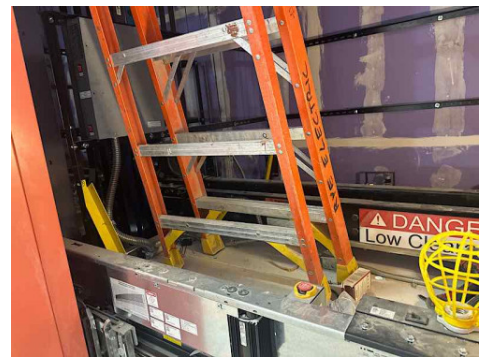
Atlas worker is standing on the second to last rung of the A frame. The worker was recommended to use a larger ladder. In addition he donned his hard hat.



A worker is observed gaining elevation by standing on a bucket. The worker was notified that a properly manufactured ladder or scaffold must be used. The worker stapled off of the bucket.



Rye workers have leaned A frame ladders above the elevators. A Lean Safe or Extension ladder should be used.



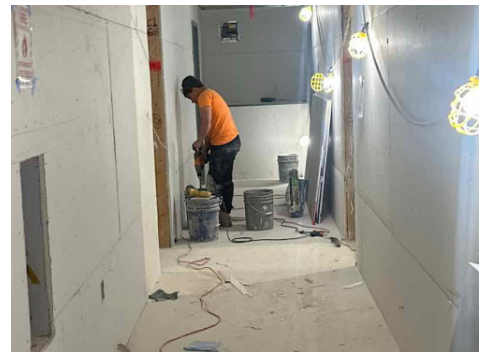
Operations

Personal Protective Equipment

Unsatisfactory

Comment

Tile worker is observed without required PPE. While mixing eye protection should be donned. Also, when coming out of a unit that does not have over head hazards, hard hats must be donned. The worker was reminded of the PPE requirements.



Trenching & Excavation

Satisfactory

Comment

Good delineations were observed around open trenches.

-

Fall Protection

Satisfactory

Guardrails

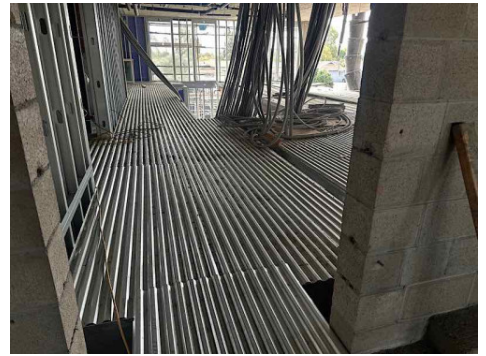
Unsatisfactory

Comment

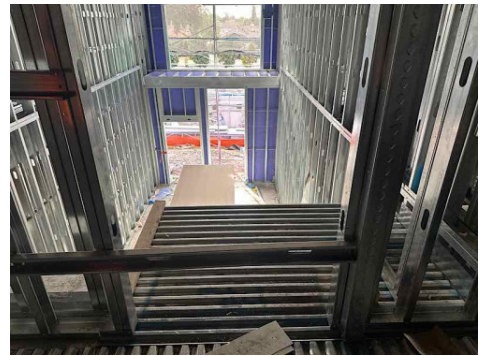
A window opening in 249 is observed with only one rail. Please ensure standard rails are setup at 42/21”.



The mezzanine in D/E has an unprotected edge. Please ensure this area is closed or protected with guard rails.



Workers have removed a top rail on the mezzanine section where they are working. Workers were notified all guard rails must be in place.



Floor / Wall Openings

Satisfactory

Supported Scaffolding

Satisfactory

Mobile Scaffolding

Satisfactory

Suspended Scaffolding	N/A
------------------------------	------------


Confined Spaces	N/A
------------------------	------------

Impalement Hazards	Satisfactory
---------------------------	---------------------

Traffic Control	Satisfactory
------------------------	---------------------

Roofing Operations	N/A
---------------------------	------------

Housekeeping	Unsatisfactory
---------------------	-----------------------

Comment	
<p>Bottles of urine are observed in hallways. Please ensure all contractors are notified of the unsanitary condition this introduces into the work site. Restrooms should be used. There has been an improvement on the cleanliness of restrooms and all workers onsite are responsible for maintaining sanitary conditions.</p>	

Demolition	N/A
-------------------	------------





Silica Control	Satisfactory
-----------------------	---------------------

Rigging Operations	Satisfactory
---------------------------	---------------------

Hot Work	Satisfactory
-----------------	---------------------

Electrical Safety	Unsatisfactory
--------------------------	-----------------------

Comment	
----------------	--

<p>Bulbs are missing from some light strings. Most lights are in place however please ensure these are inspected and missing bulbs are covered or replaced.</p>	
<p>One light is missing and the cord is damaged. This cord should be replaced.</p>	
<p>Sharp has a few cords that are damaged. Please ensure all cords are inspected and removed from service.</p>	
	

<p>Lockout / Tagout</p>	<p>N/A</p>
<p>Stairways, Ramps, Runways</p>	<p>Satisfactory</p>
<p>Other Items (that were observed)</p>	<p>N/A</p>

