

# SAFETY INSPECTION REPORT

**CONDUCTED FOR:**  
West Builders, Inc.

**PROJECT:**  
Mayer Building



**INSPECTION TYPE:**  
General Construction

**INSPECTOR :** JASON CHAVEZ  
**DATE :** JUNE 03, 2024  
**CITY :** LOS ÁNGELES  
**STATE :** CA

Safety Compliance Company is not responsible for unsafe conditions and situations not seen during this inspection. The items listed above represent only what was seen by the Safety Compliance Company Representative at the time of the inspection. Safety Compliance Company is not responsible for any ongoing unsafe condition(s) whether seen or unseen. In addition, Safety Compliance Company does not have the authority or authorization to approve, certify, or warranty any safety equipment or safety device. This agreement also indemnifies Safety Compliance Company of any omission, gross negligence, willful misconduct related to this report. Under Federal, State and Local Law, it is the responsibility of the employer and all subcontractors to mark all hazards with appropriate signs

# SUMMARY OF INSPECTION

<b>52</b> Items Inspected	<b>30</b> Satisfactory	<b>3</b> Unsatisfactory	<b>19</b> N/A
------------------------------	---------------------------	----------------------------	------------------

A safety inspection was completed onsite today. The site is maintaining good conditions overall. Walkways and housekeeping were observed to be in good order. Safety hazards observed were addressed immediately and reported to the superintendent.

**Contractors Onsite:**

- L3
- MSOMech
- Aarowlift
- Spectra
- JDI

**Site specific activity:**

- Finish painting
- Installation of minisplits in units
- Drywall taping
- Brick and mortar

# INSPECTION ITEMS

Documentation	
<b>Site Contact</b>	<b>Satisfactory</b>
<b>Comment</b>	
Mitch Thompson is onsite.	-
<b>Safety Program (Including IIPP)</b>	<b>Satisfactory</b>
<b>Comment</b>	
IIPP is onsite and available	-
<b>Heat Illness Prevention Program</b>	<b>Satisfactory</b>

Comment	
HIPP is available in the IIPP.	-

<b>Safety Data Sheets</b>	<b>Satisfactory</b>
---------------------------	---------------------

<b>Daily Inspections</b>	<b>Satisfactory</b>
--------------------------	---------------------

<b>Tailgate Meetings</b>	<b>Satisfactory</b>
--------------------------	---------------------

<b>Sub-Contractor Meetings</b>	<b>Satisfactory</b>
--------------------------------	---------------------

<b>OSHA Permits</b>	<b>Satisfactory</b>
---------------------	---------------------

<b>Labor Law Postings</b>	<b>Satisfactory</b>
---------------------------	---------------------

<b>Emergency / Other Postings</b>	<b>Satisfactory</b>
-----------------------------------	---------------------

<b>First Aid / CPR Certification</b>	<b>Satisfactory</b>
--------------------------------------	---------------------

## Emergency Items

<b>Access / Egress</b>	<b>Satisfactory</b>
------------------------	---------------------

Comment	
Access is in good order.	-

<b>Fire Extinguisher(s)</b>	<b>Satisfactory</b>
-----------------------------	---------------------

<b>First Aid Kit(s)</b>	<b>Satisfactory</b>
-------------------------	---------------------

<b>Eye Wash Station</b>	<b>Satisfactory</b>
-------------------------	---------------------

<b>Other Fire Fighting Equipment (If needed)</b>	<b>Satisfactory</b>
--	---------------------

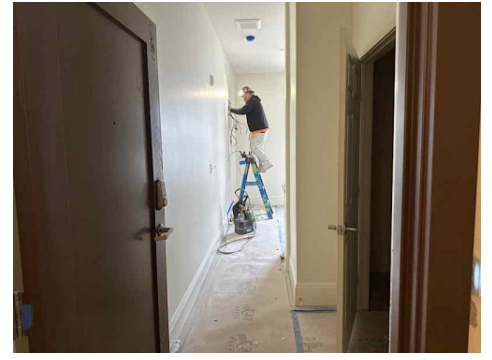
## General Items

<b>Restrooms</b>	<b>Satisfactory</b>
------------------	---------------------

Hand Washing Stations	Satisfactory
Waste Containers	Satisfactory
Potable Water	Satisfactory
Shade	Satisfactory
<b>Tools &amp; Equipment</b>	
Power Tools	Satisfactory
Hand Tools	Satisfactory
Powder Actuated Tools	N/A
Pneumatic Nailers	N/A
Mobile Elevated Work Platforms (MEWP's)	N/A
Powered Industrial Trucks	N/A
Heavy Mobile Equipment (Excavators, Loaders, etc)	N/A
Cranes	N/A
Cylinder Storage	N/A
Ladders	Unsatisfactory

Comment

MSO worker is standing in the second to last ring of the A frame ladder. This is prohibited. The worker complied to stand on the correct rung.



## Operations

**Personal Protective Equipment**

**Unsatisfactory**

**Comment**

Note, when overhead work is performed, or overhead hazards exist such as ladders, hard hats are required. The worker complied to don a hard hat.



**Trenching & Excavation**

**N/A**

**Fall Protection**

**Satisfactory**

**Guardrails**

**Satisfactory**

**Floor / Wall Openings**

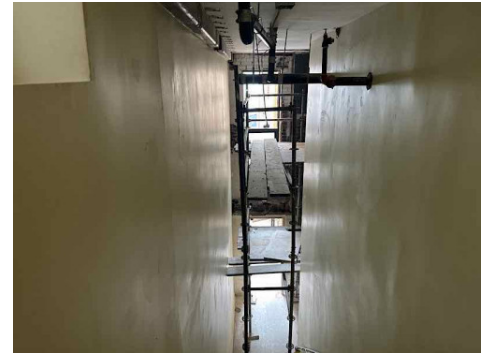
**Satisfactory**

**Supported Scaffolding**

**Unsatisfactory**

**Comment**

The scaffold in the stairway is missing a fully planked platform on the lower level. The upper level is missing a mid rail. The scaffold must be inspected by a competent person each day prior to use. All items must be corrected by the competent person prior to anyone working on the scaffold.



Workers have setup a scaffold on mud stands. This is prohibited. The workers must use scaffold frames and scaffold planks. The worker complied to use a ladder.



<b>Mobile Scaffolding</b>	<b>Satisfactory</b>
<b>Suspended Scaffolding</b>	<b>N/A</b>
<b>Confined Spaces</b>	<b>N/A</b>
<b>Impalement Hazards</b>	<b>N/A</b>
<b>Traffic Control</b>	<b>N/A</b>
<b>Roofing Operations</b>	<b>N/A</b>
<b>Housekeeping</b>	<b>Satisfactory</b>
<b>Demolition</b>	<b>N/A</b>
<b>Silica Control</b>	<b>N/A</b>
<b>Rigging Operations</b>	<b>N/A</b>

<b>Hot Work</b>	<b>N/A</b>
<b>Electrical Safety</b>	<b>Satisfactory</b>
<b>Lockout / Tagout</b>	<b>N/A</b>
<b>Stairways, Ramps, Runways</b>	<b>Satisfactory</b>
<b>Other Items (that were observed)</b>	<b>N/A</b>