

SAFETY INSPECTION REPORT

CONDUCTED FOR:
West Builders, Inc.

PROJECT:
REH



INSPECTION TYPE:
General Construction

INSPECTOR : JASON CHAVEZ
DATE : AUGUST 14, 2024
CITY : LOS ANGELES
STATE : CA

Safety Compliance Company is not responsible for unsafe conditions and situations not seen during this inspection. The items listed above represent only what was seen by the Safety Compliance Company Representative at the time of the inspection. Safety Compliance Company is not responsible for any ongoing unsafe condition(s) whether seen or unseen. In addition, Safety Compliance Company does not have the authority or authorization to approve, certify, or warranty any safety equipment or safety device. This agreement also indemnifies Safety Compliance Company of any omission, gross negligence, willful misconduct related to this report. Under Federal, State and Local Law, it is the responsibility of the employer and all subcontractors to mark all hazards with appropriate signs

SUMMARY OF INSPECTION

53 Items Inspected	32 Satisfactory	12 Unsatisfactory	9 N/A
------------------------------	---------------------------	-----------------------------	-----------------

The site was visited for a safety inspection. The contractors on site were observed regarding items including PPE, tools, and equipment and safe practices. Items of concern are noted in this report. The observations were discussed with the superintendent.

Contractors Onsite:

- JDI
- Gavina
- Conco
- Wiss
- JLM Steel

Site Specific Activity:

- +Glass Installation
- +Mechanical Rough in
- +Plumbing Rough in
- +Metal stud framing / Drywall
- +Roofing Activities

INSPECTION ITEMS

Documentation	
Site Contact	Satisfactory
Comment	
Brian and Lucas Management team	-
Safety Program (Including IIPP)	
Satisfactory	
Comment	
IIPP is onsite and available.	-
Heat Illness Prevention Program	
Satisfactory	

Comment	
HIPP is onsite and available inside the IIPP	-

Safety Data Sheets	Satisfactory
---------------------------	---------------------

Daily Inspections	Satisfactory
--------------------------	---------------------

Tailgate Meetings	Satisfactory
--------------------------	---------------------

Sub-Contractor Meetings	N/A
--------------------------------	------------

OSHA Permits	Satisfactory
---------------------	---------------------


Labor Law Postings	Satisfactory
---------------------------	---------------------

Emergency / Other Postings	Satisfactory
-----------------------------------	---------------------

First Aid / CPR Certification	Satisfactory
--------------------------------------	---------------------

Emergency Items

Access / Egress	Unsatisfactory
------------------------	-----------------------

Comment	
The stairway is missing some lighting. Please ensure access lighting is maintained through the project.	

Elevator for Hoisting Workers (if needed)	Satisfactory
--	---------------------

Fire Extinguisher(s)	Satisfactory
-----------------------------	---------------------

Comment	
---------	--

Fire extinguishers are placed as needed.	-
--	---

First Aid Kit(s)	Satisfactory
-------------------------	---------------------

Eye Wash Station	Satisfactory
-------------------------	---------------------

Other Fire Fighting Equipment (If needed)	N/A
--	------------

General Items

Restrooms	Satisfactory
------------------	---------------------

Hand Washing Stations	Satisfactory
------------------------------	---------------------

Waste Containers	Satisfactory
-------------------------	---------------------

Potable Water	Satisfactory
----------------------	---------------------

Shade	Satisfactory
--------------	---------------------

Tools & Equipment

Power Tools	Satisfactory
--------------------	---------------------

Hand Tools	Satisfactory
-------------------	---------------------

Powder Actuated Tools	Satisfactory
------------------------------	---------------------

Comment	
Signage is posted.	-

Pneumatic Nailers	N/A
--------------------------	------------

Mobile Elevated Work Platforms (MEWP's)	Satisfactory
--	---------------------

Powered Industrial Trucks	Unsatisfactory
----------------------------------	-----------------------

Comment	
----------------	--

The lift mast must be lowered when the lift is parked. Forks should be flush on the ground. The lift should not be left with a load engaged on the forks. Reported to the management team.



Heavy Mobile Equipment (Excavators, Loaders, etc)

N/A

Cranes

N/A

Cylinder Storage

Unsatisfactory

Comment

A cylinder is observed on the roof deck not protected from tipping or falling. Please ensure all cylinders are properly secured.

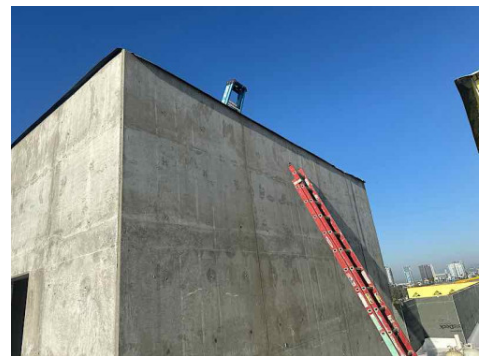


Ladders

Unsatisfactory

Comment

A leaned A frame ladder is observed on the upper deck. This should not be used as an access ladder over the parapet wall. A properly setup extension ladder should be secured at a 4:1 ratio and extend 36" above the parapet. It may be met with another extension ladder on the other side or large A frame that is opened, locked, leveled and secured from tipping or falling. Discussed with management team.



Operations

Personal Protective Equipment

Unsatisfactory

Comment

Gavina worker is cutting metal studs without safety glasses or a face shield. The worker complied to don appropriate PPE.



Trenching & Excavation

Satisfactory

Fall Protection

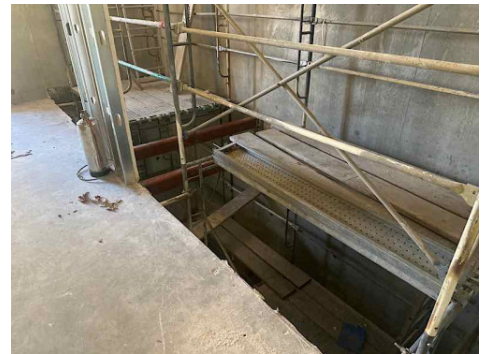
Satisfactory

Guardrails

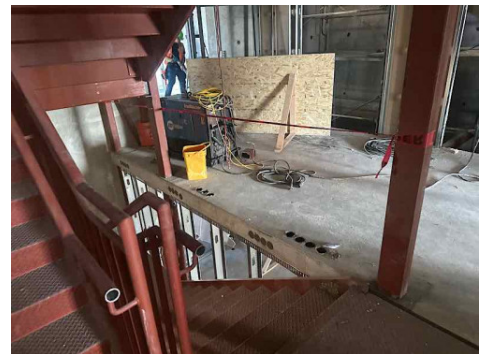
Unsatisfactory

Comment

The elevator has the rails removed. The scaffold inside is 12" away from the platform. The opening should maintain guard rails to protect workers.



Red tape does not serve as fall protection. A guard rail should be posted here.



Floor / Wall Openings

Satisfactory


Supported Scaffolding

Satisfactory


Mobile Scaffolding	N/A
---------------------------	------------

Suspended Scaffolding	N/A
------------------------------	------------

Confined Spaces	Unsatisfactory
------------------------	-----------------------

Comment	
<p>Confined spaces should be controlled and identified. Contractors must follow their confined space program determining if the space is permit required or not.</p>	

Impalement Hazards	Unsatisfactory
---------------------------	-----------------------

Comment	
<p>Multiple rebar below 72" from the grade must be protected with osha approved caps. Reported to the superintendent.</p>	

Traffic Control	Satisfactory
------------------------	---------------------

Roofing Operations	Satisfactory
---------------------------	---------------------

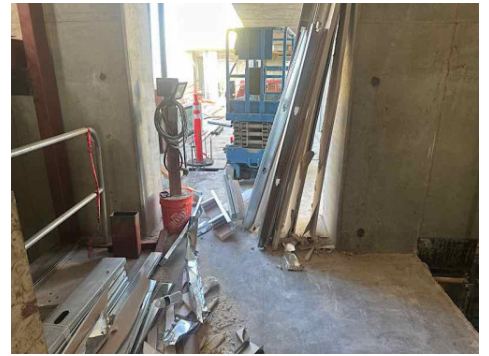
Housekeeping	Unsatisfactory
---------------------	-----------------------

Comment	
----------------	--

Contractor trash has accumulated. MC cable is in the walkway. This debris should be removed.



Debris and materials are blocking the access way. The materials should be cleared from access ways and trash disposed of.



Demolition

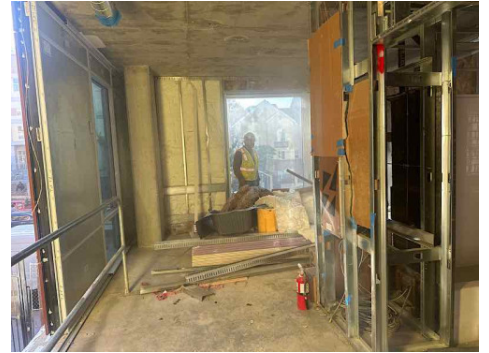
N/A

Silica Control

Unsatisfactory

Comment


A worker is grinding concrete without any engineering controls such as a vacuum or water. Silica dust must be controlled at all times. The worker was notified of the violation. In addition he needs a guard on the grinder. All reported to the management team.



Rigging Operations	Satisfactory
---------------------------	---------------------

Hot Work	Satisfactory
-----------------	---------------------

Electrical Safety	Unsatisfactory
--------------------------	-----------------------

Comment	
The temporary power cord has broken insulation at the end of the cord. This should be removed.	

Lockout / Tagout	N/A
-------------------------	------------

Stairways, Ramps, Runways	Satisfactory
----------------------------------	---------------------

Other Items (that were observed)	Unsatisfactory
---	-----------------------

Comment	
Cords should be secured from becoming trip hazards.	