

SAFETY INSPECTION REPORT

CONDUCTED FOR:
W.L. Butler Construction, Inc.

PROJECT:
Fountaingrove Apartments



INSPECTION TYPE:
General Construction

INSPECTOR : JOSHUA JOHNSON
DATE : AUGUST 21, 2024
CITY : SANTA ROSA
STATE : CA

Safety Compliance Company is not responsible for unsafe conditions and situations not seen during this inspection. The items listed above represent only what was seen by the Safety Compliance Company Representative at the time of the inspection. Safety Compliance Company is not responsible for any ongoing unsafe condition(s) whether seen or unseen. In addition, Safety Compliance Company does not have the authority or authorization to approve, certify, or warranty any safety equipment or safety device. This agreement also indemnifies Safety Compliance Company of any omission, gross negligence, willful misconduct related to this report. Under Federal, State and Local Law, it is the responsibility of the employer and all subcontractors to mark all hazards with appropriate signs

SUMMARY OF INSPECTION

53 Items Inspected	37 Satisfactory	5 Unsatisfactory	11 N/A
------------------------------	---------------------------	----------------------------	------------------

A site inspection was carried out on-site today. The project is progressing well with interior work such as drywall being installed on the upper and lower buildings of the site. The foundation work for the E building has started.

Note the following good items that were observed:

- + Fire extinguishers and first aid kit are on site.
- + Bathroom, washing facilities and trash cans are in place.
- + Safe use of heavy equipment observed.
- + MEWPs with manuals.
- + Safe operation of heavy equipment observed.

Note the following violations that need to be addressed:

Fire Extinguishers:

- BCI without a fire extinguisher by their generators. Since the is equipment is gas powered, having fire extinguisher in the area can help avoid a fire or explosion.

Cylinders:(Possibly BCI)

- Oxygen cylinders shall be separated from fuel gas cylinder or combustible materials, a minimum of 20 feet or by a noncombustible barrer at least 5 feet high having a fire-resistance rating or at least one-half hour.

Ladder:

- A-frame ladder used incorrectly. Corrected on site.
- Ladders missing legible safety and proper use labels. Note: A designated competent person can inspect the ladder and attach new stickers after they do an inspection to ensure the ladder is still in good condition and safe for use. Then employees can be made aware the ladder is safe to use.

Trenches:

- Trenches on site without proper sloping or benching.
- Tenches on site missing delineation lines or guardrails.
- Note: Trenches over 5 feet require proper permitting. Trenches should be sloped, benched or supported before entry. Proper access/egress should be in place by mean of ladders. Additionally, a competent person should evaluate trenches daily before entry. Finally, spoil piles should be kept 2 feet or more away from the edges of trenches.
- Employees shall be protected from excavated or other materials or equipment that could pose a hazard by falling or rolling into excavations. Protection shall be provided by placing and keeping such materials or

equipment at least 2 feet from the edge of excavations, or by the use of retaining devices that are sufficient to prevent materials or equipment from falling or rolling into excavations, or by a combination of both if necessary.

Supported Scaffolding:

- Modified frame used at the base of the scaffolding. This is not allowed. Scaffold sub-contractor should replace the frame and destroy it.

Overall, the site was found in satisfactory condition. The team is to be commended for their hard work and attention to safety.

•• Please see additional report notations below. •••

INSPECTION ITEMS

Documentation

Site Contact	Satisfactory
Comment	
Miguel Castaneda	-

Safety Program (Including IIPP)	Satisfactory
Comment	
Good job having this available on site.	-

Heat Illness Prevention Program	Satisfactory
Comment	
Good job having this available on site.	-

Safety Data Sheets	Satisfactory
Comment	
Good job having this available on site.	-

Daily Inspections	Satisfactory
Comment	
Good job making sure these are being performed.	-

Tailgate Meetings	Satisfactory
Comment	
Being performed.	-

Sub-Contractor Meetings	Satisfactory
--------------------------------	---------------------

OSHA Permits	Satisfactory
Comment	
Good job having these permits in place.	-

Labor Law Postings	Satisfactory
Comment	
Good job having these posted.	-

Emergency / Other Postings	Satisfactory
Comment	
Good job having these posted in the office.	-

First Aid / CPR Certification	Satisfactory
--------------------------------------	---------------------

Emergency Items

Access / Egress	Satisfactory
Comment	
No concerns observed.	-

Elevator for Hoisting Workers (if needed)	N/A
--	------------

Fire Extinguisher(s)	Unsatisfactory
Comment	

BCI without a fire extinguisher by their generator. On-site contact followed.



First Aid Kit(s) **Satisfactory**

Comment	
Available.	-

Eye Wash Station **Satisfactory**

Comment	
In place.	-

Other Fire Fighting Equipment (If needed) **N/A**

General Items

Restrooms **Satisfactory**

Comment	
Good time having restrooms in place.	-

Hand Washing Stations **Satisfactory**

Comment	
In place.	-

Waste Containers **Satisfactory**

Comment	
Good job having dumpsters and waste containers in place.	-

Potable Water **Satisfactory**

Comment	
----------------	--

Available.	-
------------	---

Shade	Satisfactory
--------------	---------------------

Comment	
----------------	--

Provided by the building.	-
---------------------------	---

Tools & Equipment

Power Tools	Satisfactory
--------------------	---------------------

Comment	
----------------	--

Good job having guards in place.



Hand Tools	Satisfactory
-------------------	---------------------

Comment	
----------------	--

No concerns observed.	-
-----------------------	---

Powder Actuated Tools	N/A
------------------------------	------------

Pneumatic Nailers	Satisfactory
--------------------------	---------------------

Comment	
----------------	--

No concerns observed during the visit.	-
--	---

Mobile Elevated Work Plarforms (MEWP's)	Satisfactory
--	---------------------

Comment	
----------------	--

No concerns observed.	-
-----------------------	---

Powered Industrial Trucks	Satisfactory
----------------------------------	---------------------

Comment	
----------------	--

Safe use observed during the visit.



Heavy Mobile Equipment (Excavators, Loaders, etc) **Satisfactory**

Comment

No concerns observed.



Cranes **N/A**

Cylinder Storage **Unsatisfactory**

Comment

Cylinders stored correctly. See summary for additional details. On site contact is following.



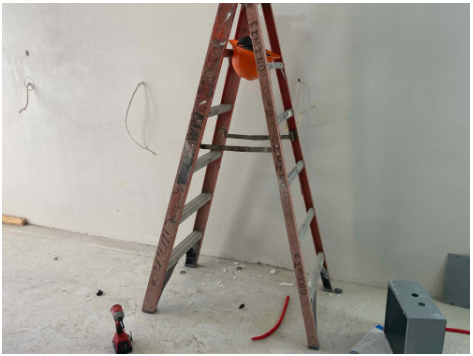
Ladders **Unsatisfactory**

Comment

Employee reminded of proper ladder use. A-frame ladders should not be straddled. They must be opened and used on one side.



Legible safety labels are missing from some ladders on site.



Operations

Personal Protective Equipment	Satisfactory
Comment	
No concerns observed.	-

Trenching & Excavation **Unsatisfactory**

Comment	
As a reminder spoil piles must be kept 2 feet away from any trench. Competent persons must daily inspect and document trenches 5 feet or deeper. Trenches 4 feet deep or greater need proper access and egress by means of a ladder. Additionally, trenches need benching, sloping or shoring in line with soil type, if a worker is going to enter them.	-

Trenches, needing delineation lines and proper sloping or benching. Note: shoring must be in place if workers are in these trenches. Location is behind the D building. On site contact following.



Delineation lines and or guardrails needed at this location by the E. A fall of over 6 feet exist between the forms and the excavation wall.



Fall Protection

Satisfactory

Comment

Good job using passive fall protection.



Guardrails

Satisfactory

Comment

Good job having rails in place.

-

Floor / Wall Openings

Satisfactory

Comment

No concerns observed.

-

Supported Scaffolding

Unsatisfactory

Comment

Bottom frames cut and compromised. NOTE frames should not be altered. This compromises their structural integrity and could compromise the integrity of the whole scaffold. Scaffold subcontractor should remove this frame from service and destroy it.



Mobile Scaffolding

Satisfactory

Suspended Scaffolding

N/A

Confined Spaces

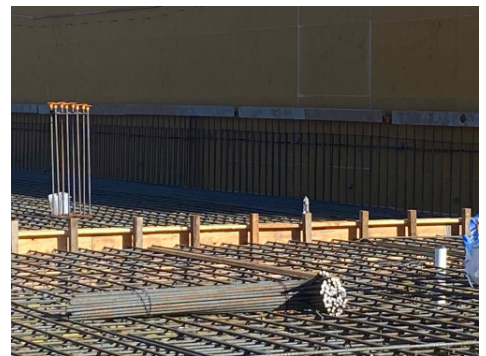
N/A

Impalement Hazards

Satisfactory

Comment

Good rebar protection in place by Largo.



Traffic Control

Satisfactory

Comment

No concerns observed.

-

Roofing Operations

Satisfactory

Comment

No concerns observed.

-

Housekeeping

Satisfactory

Comment

No concerns observed.	-
-----------------------	---

Demolition	N/A
-------------------	------------

Silica Control	Satisfactory
-----------------------	---------------------

Comment	
----------------	--

No concerns observed.	-
-----------------------	---

Rigging Operations	N/A
---------------------------	------------

Hot Work	N/A
-----------------	------------

Electrical Safety	Satisfactory
--------------------------	---------------------

Comment	
----------------	--

No concerns observed.	-
-----------------------	---

Lockout / Tagout	N/A
-------------------------	------------

Stairways, Ramps, Runways	Satisfactory
----------------------------------	---------------------

Comment	
----------------	--

No concerns observed.	-
-----------------------	---

Good job having a ramp in place at this location.	
---	---

Other Items (that were observed)	N/A
---	------------