

SAFETY INSPECTION REPORT

CONDUCTED FOR:
W.L. Butler Construction, Inc.

PROJECT:
Fountaingrove Apartments



INSPECTION TYPE:
General Construction

INSPECTOR : JOSHUA JOHNSON
DATE : JANUARY 09, 2025
CITY : SANTA ROSA
STATE : CA

Safety Compliance Company is not responsible for unsafe conditions and situations not seen during this inspection. The items listed above represent only what was seen by the Safety Compliance Company Representative at the time of the inspection. Safety Compliance Company is not responsible for any ongoing unsafe condition(s) whether seen or unseen. In addition, Safety Compliance Company does not have the authority or authorization to approve, certify, or warranty any safety equipment or safety device. This agreement also indemnifies Safety Compliance Company of any omission, gross negligence, willful misconduct related to this report. Under Federal, State and Local Law, it is the responsibility of the employer and all subcontractors to mark all hazards with appropriate signs

SUMMARY OF INSPECTION

54 Items Inspected	41 Satisfactory	3 Unsatisfactory	10 N/A
------------------------------	---------------------------	----------------------------	------------------

A site inspection was carried out on-site today. The project is progressing well with interior finish work is being completed on the upper buildings of the site. The framing for the E building is moving higher. D building interior and exterior work is ongoing. F building framing work is moving forward.

Note the following good items that were observed:

- + Fire extinguishers and first aid kits are on site.
- + MEWPs with manuals.
- + Reach lift operated safely.
- + Restrooms available.
- + Handwashing stations available.

The following concern was observed:

PPE

- Workers on site missing the necessary PPE. PPE is needed to protect them from common construction hazards on the site. Reminder given on site.

Mobile Scaffold:

- Manufacturer and CAL/Osha standards not followed in the use of scaffolding. Ensure that Adco has documented scaffolding training for its workers on site.

Overall, the site was found in satisfactory condition.

ooo Please see additional report notations below. ooo

INSPECTION ITEMS

Documentation	
Site Contact	Satisfactory
Comment	
Miguel Castaneda	-

Safety Program (Including IIPP)		Satisfactory
Comment		
Good job having this available on site.		-

Heat Illness Prevention Program		Satisfactory
Comment		
Good job having this available on site.		-

Safety Data Sheets		Satisfactory
Comment		
Good job having this available on site.		-

Daily Inspections		Satisfactory
Comment		
Ensure these are performed and documented every day.		-

Tailgate Meetings		Satisfactory
Comment		
Ensure these are being performed, at least every 10 days and documented.		-

Sub-Contractor Meetings		Satisfactory
--------------------------------	--	---------------------

OSHA Permits		Satisfactory
Comment		
Good job having these permits in place.		-


Labor Law Postings		Satisfactory
Comment		
Good job having these posted. NOTE: 2025 posters will be needed.		-

Emergency / Other Postings		Satisfactory
Comment		

Good job having these posted in the office.	-
---	---

First Aid / CPR Certification	Satisfactory
Comment	
Ensure these are up to date. Typically certification is required every 2 years.	-

Emergency Items

Access / Egress	Satisfactory
Comment	-
Improved access and egress observed at the F building.	

Elevator for Hoisting Workers (if needed)	N/A
--	------------

Fire Extinguisher(s)	Satisfactory
Comment	-
Fire extinguishers are available throughout the site. Note: Ensure monthly inspections are performed and documented.	
One extinguisher was found with a low charge. Site contact is following.	-

First Aid Kit(s)	Satisfactory
Comment	
Available.	-

Eye Wash Station	Satisfactory
Comment	
In place.	-

Other Fire Fighting Equipment (If needed)	N/A
--	------------

General Items

Restrooms	Satisfactory
------------------	---------------------

Comment	-
----------------	---

Plenty of toilets are located on site and are being kept clean and in good working order.



Hand Washing Stations	Satisfactory
------------------------------	---------------------

Comment	-
----------------	---

Ensure stations are stocked with hand towels

Waste Containers	Satisfactory
-------------------------	---------------------

Comment	-
----------------	---

Good job having dumpsters and waste containers in place.

Potable Water	Satisfactory
----------------------	---------------------

Comment	-
----------------	---

Available.

Shade	Satisfactory
--------------	---------------------

Comment	-
----------------	---

Provided by the building.

Tools & Equipment


Power Tools	Satisfactory
--------------------	---------------------

Hand Tools	Satisfactory
-------------------	---------------------


Comment	-
No concerns observed.	-


Powder Actuated Tools	N/A
------------------------------	------------

Pneumatic Nailers	Satisfactory
--------------------------	---------------------


Comment	Ciarra
Nail guns are being disconnected from compressed air when not in use	

Mobile Elevated Work Platforms (MEWP's)	Satisfactory
--	---------------------

Comment	-
Parked safely.	

Comment	-
Safe use observed.	

Powered Industrial Trucks	Satisfactory
----------------------------------	---------------------

Comment		-
Seatbelt being worn while operated.		

Heavy Mobile Equipment (Excavators, Loaders, etc)	Satisfactory
--	---------------------

Comment		-
No concerns observed.		

Cranes	N/A
---------------	------------

Cylinder Storage	Satisfactory
-------------------------	---------------------

Comment		-
Good job ensuring propane cylinders are stored safely.		

Ladders	Satisfactory
----------------	---------------------

Operations	Unsatisfactory
-------------------	-----------------------

Personal Protective Equipment	Unsatisfactory
--------------------------------------	-----------------------

Comment	Lance Cabinets
----------------	-----------------------

Clear signage regarding expected PPE is in place. A few reminders were given on site.

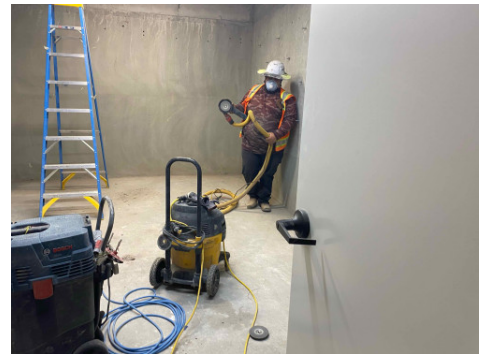
Lance Cabinets work observed working without safety glasses, hardhat, or gloves.



Comment

Largo

Good silica control was observed during the grinding. However, this worker was not wearing safety glasses. Corrected on site.



Trenching & Excavation

Satisfactory

Fall Protection

Satisfactory

Guardrails

Satisfactory

Floor / Wall Openings

Satisfactory

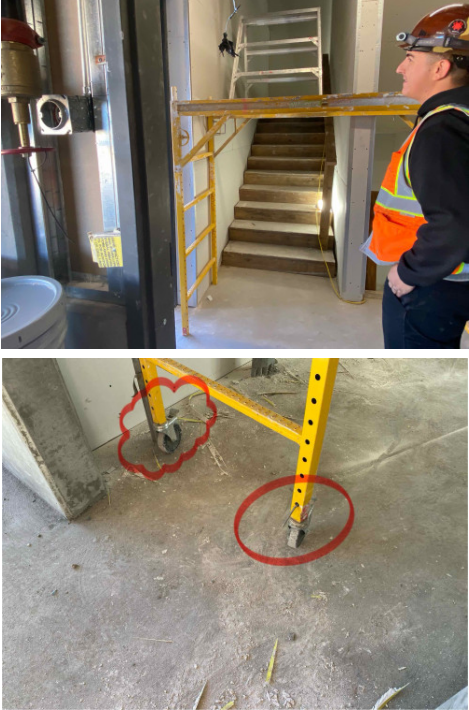
Comment

Ensure all chases and floor/roof openings are well protected.

-

Supported Scaffolding

Satisfactory

Mobile Scaffolding	Unsatisfactory
Comment	Adco
<p>Incorrect use of mobile scaffold, observed in two locations. One location in the D building. Another location in the E building. Both were corrected on site.</p> <p>D building: Incorrect setup. Ladder placed on an incomplete platform supported by a mobile scaffold without proper base. Corrected on site. Ensure workers have documented scaffolding training.</p> <p>E building: Screw used to secure wheel in a Baker scaffold. Another wheel was missing a pin.</p>	
Suspended Scaffolding	N/A
Confined Spaces	N/A
Impalement Hazards	Satisfactory
Traffic Control	Satisfactory
Roofing Operations	Satisfactory
Housekeeping	Satisfactory
Demolition	N/A
Silica Control	Satisfactory
Rigging Operations	N/A

Hot Work	N/A
Electrical Safety	Satisfactory
Comment	
Ensure lockout tag out procedures are being followed. Additionally, ensure that exposed wires are protected.	-
Lockout / Tagout	Satisfactory
Stairways, Ramps, Runways	Satisfactory
Other Items (that were observed)	N/A