

SAFETY INSPECTION REPORT

CONDUCTED FOR:
Woodside Homes: Arizona

PROJECT:
Horizon at the Dells



INSPECTION TYPE:
General Construction

INSPECTOR : SEAN NELSON

DATE : JULY 24, 2024

CITY :

STATE :

Safety Compliance Company is not responsible for unsafe conditions and situations not seen during this inspection. The items listed above represent only what was seen by the Safety Compliance Company Representative at the time of the inspection. Safety Compliance Company is not responsible for any ongoing unsafe condition(s) whether seen or unseen. In addition, Safety Compliance Company does not have the authority or authorization to approve, certify, or warranty any safety equipment or safety device. This agreement also indemnifies Safety Compliance Company of any omission, gross negligence, willful misconduct related to this report. Under Federal, State and Local Law, it is the responsibility of the employer and all subcontractors to mark all hazards with appropriate signs

SUMMARY OF INSPECTION

53 Items Inspected	26 Satisfactory	7 Unsatisfactory	20 N/A
------------------------------	---------------------------	----------------------------	------------------

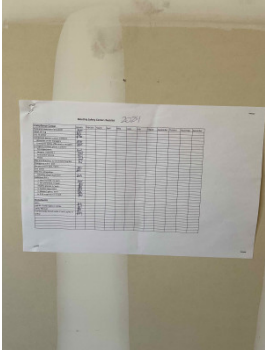
There were a few issues with the scaffolding on site. The safety checklist was posted, it has not been filled out since January. The fire extinguisher inside of the office hasn't been inspected in months. Painters need to wear fall protection when painting on the roofs.

INSPECTION ITEMS

Documentation

Site Contact	Satisfactory
Safety Program (Including IIPP)	Satisfactory
Heat Illness Prevention Program	Satisfactory
Safety Data Sheets	Satisfactory

Daily Inspections **Unsatisfactory**

Comment	
The safety checklist hasn't been filled out since January.	

Tailgate Meetings **Satisfactory**

Sub-Contractor Meetings **Satisfactory**

OSHA Permits	Satisfactory
Labor Law Postings	Satisfactory
Emergency / Other Postings	Satisfactory
First Aid / CPR Certification	Satisfactory

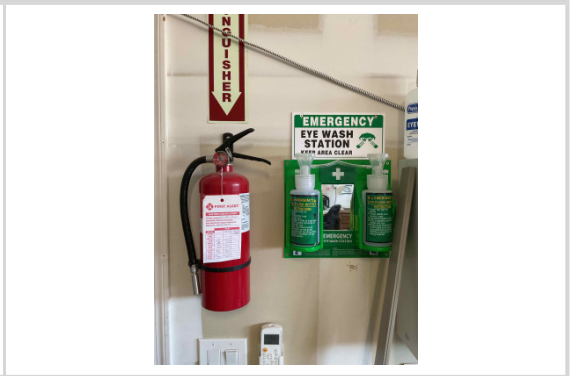
Emergency Items

Access / Egress	Satisfactory
Elevator for Hoisting Workers (if needed)	N/A

Fire Extinguisher(s)	Unsatisfactory
-----------------------------	-----------------------

Comment

The fire extinguisher inside of the safety center hasn't been inspected since January.



First Aid Kit(s)	Satisfactory
-------------------------	---------------------

Eye Wash Station	Satisfactory
-------------------------	---------------------

Other Fire Fighting Equipment (If needed)	N/A
--	------------

General Items

Restrooms	Satisfactory
------------------	---------------------

Hand Washing Stations	Unsatisfactory
------------------------------	-----------------------

Comment

No hand washing station has yet been setup for this job site

-

Waste Containers

Satisfactory

Potable Water

Satisfactory

Shade

Satisfactory

Tools & Equipment

Power Tools

Satisfactory

Hand Tools

Satisfactory

Powder Actuated Tools

N/A

Pneumatic Nailers

Satisfactory

Mobile Elevated Work Platforms (MEWP's)

N/A

Powered Industrial Trucks

N/A

Heavy Mobile Equipment (Excavators, Loaders, etc)

N/A

Cranes

N/A

Cylinder Storage

N/A

Ladders


Satisfactory

Operations

Personal Protective Equipment


Unsatisfactory

Comment

<p>There were a few Framers on site that were wearing tennis shoes.</p>	
---	---

<p>Trenching & Excavation</p>	<p>Unsatisfactory</p>
--	------------------------------

<p>Comment</p>	
-----------------------	--

<p>All open trenches on site must be barricaded.</p>	
--	--

<p>Fall Protection</p>	<p>Unsatisfactory</p>
-------------------------------	------------------------------

<p>Comment</p>	
-----------------------	--




<p>The painters were working on the roof without wearing any fall protection.</p>	
---	---

<p>Guardrails</p>	<p>N/A</p>
--------------------------	-------------------

<p>Floor / Wall Openings</p>	<p>N/A</p>
-------------------------------------	-------------------

<p>Supported Scaffolding</p>	<p>Unsatisfactory</p>
-------------------------------------	------------------------------

<p>Comment</p>	
-----------------------	--

<p>Bad planks must not be used for the supported platform.</p>	
<p>All sections of scaffolding must have a ladder access.</p>	
<p>There should be no gaps greater than an inch in between planks.</p>	

<p>Mobile Scaffolding</p>	<p>N/A</p>
<p>Suspended Scaffolding</p>	<p>N/A</p>
<p>Confined Spaces</p>	<p>N/A</p>
<p>Impalement Hazards</p>	<p>Satisfactory</p>
<p>Traffic Control</p>	<p>Satisfactory</p>
<p>Roofing Operations</p>	<p>N/A</p>

Housekeeping	Satisfactory
Demolition	N/A
Silica Control	Satisfactory
Rigging Operations	N/A
Hot Work	N/A
Electrical Safety	Satisfactory
Lockout / Tagout	N/A
Stairways, Ramps, Runways	N/A
Other Items (that were observed)	N/A