

# SAFETY INSPECTION REPORT

**CONDUCTED FOR:**  
Woodside Homes: Arizona

**PROJECT:**  
Horizon at the Dells



**INSPECTION TYPE:**  
General Construction

**INSPECTOR :** SEAN NELSON  
**DATE :** SEPTEMBER 04, 2024  
**CITY :** PRESCOTT  
**STATE :** ARIZONA

Safety Compliance Company is not responsible for unsafe conditions and situations not seen during this inspection. The items listed above represent only what was seen by the Safety Compliance Company Representative at the time of the inspection. Safety Compliance Company is not responsible for any ongoing unsafe condition(s) whether seen or unseen. In addition, Safety Compliance Company does not have the authority or authorization to approve, certify, or warranty any safety equipment or safety device. This agreement also indemnifies Safety Compliance Company of any omission, gross negligence, willful misconduct related to this report. Under Federal, State and Local Law, it is the responsibility of the employer and all subcontractors to mark all hazards with appropriate signs

# SUMMARY OF INSPECTION

<b>53</b> Items Inspected	<b>23</b> Satisfactory	<b>9</b> Unsatisfactory	<b>21</b> N/A
------------------------------	---------------------------	----------------------------	------------------

A safety site inspection was conducted today.

- + The safety center was setup, IIPP was accessible
- + Safety center checklist was posted, but is not up to date

Subcontracting trades on site at time of inspection are as follows:

- \*McDermott Construction
- \*Paul Johnson Drywall
- \*Old World Masonry
- \*Sebastian Roofing

The following safety issues were observed:

- None of the roofers on site had fall protection
- Masonry contractors on site were not wearing hard hats
- Ladders used for access weren't tied off
- The framers were using flammable gases and liquids without having access to a fire extinguisher
- All of the scaffolding on site was red tagged
- Most of the scaffolding on site was missing ladder accesses
- Need to make sure that severely damaged planks are not used for mud sills for the scaffold baseplates
- Scaffolding must be fully planked
- The safety checklist was posted but not being filled out
- The fire extinguisher inside of the safety center is not being inspected
- Masonry workers need to use water with the saw when cutting brick

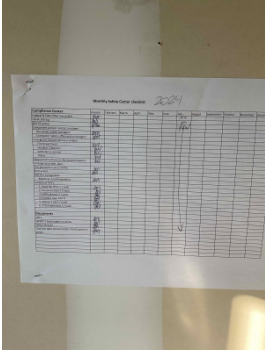
- + There was plenty of water found on site
- + These issues were noticed by Andrew as well

# INSPECTION ITEMS

## Documentation

**Site Contact**

Satisfactory

<b>Safety Program (Including IIPP)</b>	<b>Satisfactory</b>
<b>Heat Illness Prevention Program</b>	<b>Satisfactory</b>
<b>Safety Data Sheets</b>	<b>Satisfactory</b>
<b>Daily Inspections</b>	<b>Unsatisfactory</b>
<b>Comment</b>	
The safety checklist has been posted and filled out for July, but has not yet been filled out for August nor September.	
<b>Tailgate Meetings</b>	<b>Satisfactory</b>
<b>Sub-Contractor Meetings</b>	<b>Satisfactory</b>
<b>OSHA Permits</b>	<b>Satisfactory</b>
<b>Labor Law Postings</b>	<b>Satisfactory</b>
<b>Emergency / Other Postings</b>	<b>Satisfactory</b>
<b>First Aid / CPR Certification</b>	<b>Satisfactory</b>
<b>Emergency Items</b>	
<b>Access / Egress</b>	<b>Satisfactory</b>
<b>Elevator for Hoisting Workers (if needed)</b>	<b>N/A</b>
<b>Fire Extinguisher(s)</b>	<b>Unsatisfactory</b>

**Comment**

The fire extinguisher inside of the safety center hasn't been inspected since January.



Framers were using flammable gases and liquids, but did not have a fire extinguisher within 25 feet of those materials.



**First Aid Kit(s)**

**Satisfactory**

**Eye Wash Station**

**Satisfactory**

**Comment**

An eyewash station has been setup inside of the safety center.



**Other Fire Fighting Equipment (If needed)**

**N/A**

**General Items**

**Restrooms**

**Satisfactory**

**Hand Washing Stations**

**Unsatisfactory**

Comment	
No hand washing station has yet been setup for this job site	-

<b>Waste Containers</b>	<b>Satisfactory</b>
-------------------------	---------------------

<b>Potable Water</b>	<b>Satisfactory</b>
----------------------	---------------------

<b>Shade</b>	<b>Satisfactory</b>
--------------	---------------------

## Tools & Equipment

<b>Power Tools</b>	<b>Satisfactory</b>
--------------------	---------------------

<b>Hand Tools</b>	<b>Satisfactory</b>
-------------------	---------------------

<b>Powder Actuated Tools</b>	<b>N/A</b>
------------------------------	------------

<b>Pneumatic Nailers</b>	<b>Satisfactory</b>
--------------------------	---------------------

<b>Mobile Elevated Work Platforms (MEWP's)</b>	<b>N/A</b>
--	------------

<b>Powered Industrial Trucks</b>	<b>N/A</b>
----------------------------------	------------

<b>Heavy Mobile Equipment (Excavators, Loaders, etc)</b>	<b>N/A</b>
--	------------

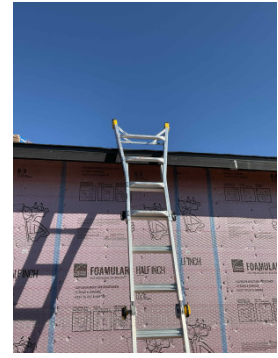
<b>Cranes</b>	<b>N/A</b>
---------------	------------

<b>Cylinder Storage</b>	<b>N/A</b>
-------------------------	------------

<b>Ladders</b>	<b>Unsatisfactory</b>
----------------	-----------------------

Comment
---------

All ladders used for access must be tied off and extend three feet over the leading edge.

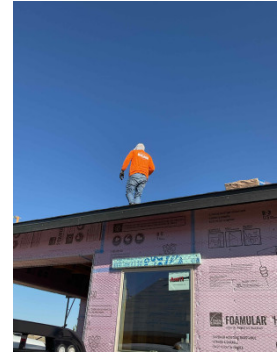


**Operations**

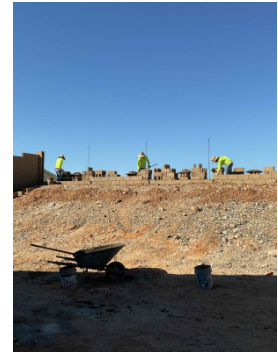
**Personal Protective Equipment** **Unsatisfactory**

**Comment**

The roofers weren't wearing any fall protection nor hard hats.



Masonry contractor were not wearing hard hats.

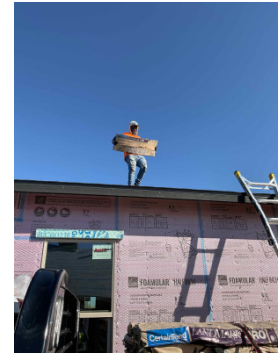


**Trenching & Excavation** **N/A**

**Fall Protection** **Unsatisfactory**

**Comment**

The roofers didn't even have any fall protection on the roof with them. Everyone must be tied off when working above six feet in height.



**Guardrails**

**N/A**

**Floor / Wall Openings**

**N/A**

**Supported Scaffolding**

**Unsatisfactory**



**Comment**

All sections of scaffolding must have a ladder access.



Must not use severely damaged planks or damaged pads for mud sills for the baseplates on the scaffolding.



<p>All sections of scaffolding must be fully planked.</p>	
<p>There must be no gaps greater than an inch in between planks.</p>	

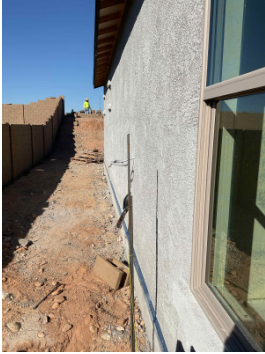
<p><b>Mobile Scaffolding</b></p>	<p>N/A</p>
----------------------------------	------------

<p><b>Suspended Scaffolding</b></p>	<p>N/A</p>
-------------------------------------	------------

<p><b>Confined Spaces</b></p>	<p>N/A</p>
-------------------------------	------------

<p><b>Impalement Hazards</b></p>	<p><b>Unsatisfactory</b></p>
----------------------------------	------------------------------

<p><b>Comment</b></p>
-----------------------

<p>All rebar below six feet in height must be capped.</p>	
---	---

<p><b>Traffic Control</b></p>	<p><b>Satisfactory</b></p>
-------------------------------	----------------------------


<p><b>Roofing Operations</b></p>	<p>N/A</p>
----------------------------------	------------



<b>Housekeeping</b>	<b>Satisfactory</b>
---------------------	---------------------

<b>Demolition</b>	<b>N/A</b>
-------------------	------------

<b>Silica Control</b>	<b>Unsatisfactory</b>
-----------------------	-----------------------

<b>Comment</b>	
<p>Masonry contractors must use water when they are cutting brick to cut down and possibly eliminate silica dust while cutting.</p>	

<b>Rigging Operations</b>	<b>N/A</b>
---------------------------	------------

<b>Hot Work</b>	<b>N/A</b>
-----------------	------------

<b>Electrical Safety</b>	<b>Satisfactory</b>
--------------------------	---------------------

<b>Lockout / Tagout</b>	<b>N/A</b>
-------------------------	------------

<b>Stairways, Ramps, Runways</b>	<b>N/A</b>
----------------------------------	------------

<b>Other Items (that were observed)</b>	<b>N/A</b>
---	------------