

# SAFETY INSPECTION REPORT

**CONDUCTED FOR:**  
Woodside Homes: Arizona

**PROJECT:**  
Overlook at the Dells



**INSPECTION TYPE:**  
General Construction

**INSPECTOR:** SEAN NELSON  
**DATE:** FEBRUARY 25, 2025  
**CITY:** PRESCOTT  
**STATE:** AZ  
**SITE CONTACT:** CHRIS DUENAS  
**ADDITIONAL SITE CONTACT:** N/A

Safety Compliance Company is not responsible for unsafe conditions and situations not seen during this inspection. The items listed above represent only what was seen by the Safety Compliance Company Representative at the time of the inspection. Safety Compliance Company is not responsible for any ongoing unsafe condition(s) whether seen or unseen. In addition, Safety Compliance Company does not have the authority or authorization to approve, certify, or warranty any safety equipment or safety device. This agreement also indemnifies Safety Compliance Company of any omission, gross negligence, willful misconduct related to this report. Under Federal, State and Local Law, it is the responsibility of the employer and all subcontractors to mark all hazards with appropriate signs

# SUMMARY OF INSPECTION

<b>54</b> Items Inspected	<b>21</b> Satisfactory	<b>9</b> Unsatisfactory	<b>24</b> N/A
------------------------------	---------------------------	----------------------------	------------------

A safety site inspection was conducted today.

- + The safety center was setup, the log 300A for 2024 has not yet been posted
- + Safety center checklist was posted but has not been filled out for February
- + The fire extinguisher inside of the safety center hasn't been inspected February

Subcontracting trades on site at time of inspection are as follows:

- \* DSC Painting
- \* High Desert Finishing - scaffolding
- \* Site Works
- \* RED Plumbing
- \* Old World

The following safety issues were observed:

- The cabinet installers weren't wearing their safety glasses while using saws
  - Plumbers weren't wearing their hard hats
  - Plumbers must have a fire extinguisher within five feet of all hot work
  - Must use proper covers for uncapped rebar
  - Painters must have a fire extinguisher on site when using flammable gases
- + There was plenty of water found on site
  - + The site superintendent was on site

# INSPECTION ITEMS

## Documentation

Safety Program (Including IIPP)

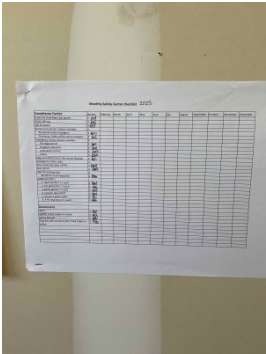
Satisfactory

Heat Illness Prevention Program

Satisfactory

**Safety Data Sheets** **Satisfactory**

**Daily Inspections** **Unsatisfactory**

Comment	Woodside Homes
The safety checklist has not yet been completed for February.	

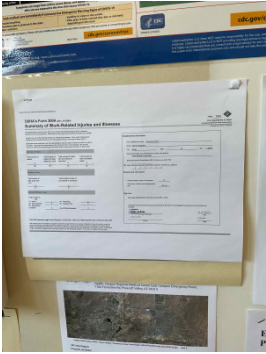
**Tailgate Meetings** **Satisfactory**

**Sub-Contractor Meetings** **Satisfactory**

**OSHA Permits** **Satisfactory**

**Labor Law Postings** **Satisfactory**

**Emergency / Other Postings** **Unsatisfactory**

Comment	Woodside Homes
The log 300A for 2024 has not yet been posted.	


**First Aid / CPR Certification** **Satisfactory**

**Emergency Items**

<b>Access / Egress</b>	<b>Satisfactory</b>
------------------------	---------------------


<b>Elevator for Hoisting Workers (if needed)</b>	<b>N/A</b>
--	------------

<b>Fire Extinguisher(s)</b>	<b>Unsatisfactory</b>
-----------------------------	-----------------------

Comment	Woodside Homes
<p>The fire extinguisher inside of the safety center has not yet been inspected for February.</p>	

<b>First Aid Kit(s)</b>	<b>Satisfactory</b>
-------------------------	---------------------

<b>Eye Wash Station</b>	<b>Satisfactory</b>
-------------------------	---------------------

Comment	
<p>An eyewash station has been setup.</p>	

<b>Other Fire Fighting Equipment (If needed)</b>	<b>Unsatisfactory</b>
--	-----------------------

<b>Comment</b>	<b>RED Plumbing</b>
----------------	---------------------

Plumbers must have a fire extinguisher within five feet of all hot work.



**Comment**

**DSC Painting**

Painters must have a fire extinguisher on site when using flammable gases.



**General Items**

**Restrooms**

**Satisfactory**

**Hand Washing Stations**

**Unsatisfactory**

**Comment**

**Woodside Homes**

No hand washing station has yet been setup for this job site

-

**Waste Containers**

**Satisfactory**

**Potable Water**

**Satisfactory**

**Shade**

**Satisfactory**

**Tools & Equipment**

**Power Tools**

**Satisfactory**


**Hand Tools**

**Satisfactory**

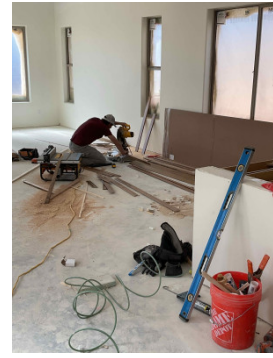
<b>Powder Actuated Tools</b>	<b>N/A</b>
<b>Pneumatic Nailers</b>	<b>N/A</b>
<b>Mobile Elevated Work Platforms (MEWP's)</b>	<b>N/A</b>
<b>Powered Industrial Trucks</b>	<b>N/A</b>
<b>Heavy Mobile Equipment (Excavators, Loaders, etc)</b>	<b>N/A</b>
<b>Cranes</b>	<b>N/A</b>
<b>Cylinder Storage</b>	<b>N/A</b>
<b>Ladders</b>	<b>Satisfactory</b>

## Operations

### Personal Protective Equipment **Unsatisfactory**

<b>Comment</b>	<b>RED Plumbing</b>
The plumbers were working in houses without wearing their hard hats.	
<b>Comment</b>	<b>Site Works</b>

Cabinet installers were using saws without wearing any eye protection.



**Trenching & Excavation**

**N/A**

**Fall Protection**

**N/A**

**Guardrails**

**N/A**

**Floor / Wall Openings**

**N/A**

**Supported Scaffolding**

**N/A**

**Mobile Scaffolding**

**N/A**

**Suspended Scaffolding**

**N/A**

**Confined Spaces**

**N/A**

**Impalement Hazards**

**Unsatisfactory**

**Comment**

**Old World**

Cannot use a glass bottle as a rebar cap.



Traffic Control	Satisfactory
Roofing Operations	N/A
Housekeeping	Satisfactory
Demolition	N/A
Silica Control	N/A
Rigging Operations	N/A
Hot Work	N/A
Electrical Safety	Satisfactory
Lockout / Tagout	N/A
Stairways, Ramps, Runways	N/A
Other Items (that were observed)	N/A