

SAFETY INSPECTION REPORT

CONDUCTED FOR:
Woodside Homes: Arizona

PROJECT:
Palo Verde at North Creek



INSPECTION TYPE:
General Construction

INSPECTOR : SEAN NELSON

DATE : MAY 31, 2024

CITY :

STATE :

Safety Compliance Company is not responsible for unsafe conditions and situations not seen during this inspection. The items listed above represent only what was seen by the Safety Compliance Company Representative at the time of the inspection. Safety Compliance Company is not responsible for any ongoing unsafe condition(s) whether seen or unseen. In addition, Safety Compliance Company does not have the authority or authorization to approve, certify, or warranty any safety equipment or safety device. This agreement also indemnifies Safety Compliance Company of any omission, gross negligence, willful misconduct related to this report. Under Federal, State and Local Law, it is the responsibility of the employer and all subcontractors to mark all hazards with appropriate signs

SUMMARY OF INSPECTION

52 Items Inspected	27 Satisfactory	4 Unsatisfactory	21 N/A
------------------------------	---------------------------	----------------------------	------------------

Fall protection isn't being used by the HVAC crew when working in the attic. Need to make sure that no one uses an A-frame ladder for access or egress.

INSPECTION ITEMS

Documentation


Site Contact	Satisfactory
---------------------	---------------------

Safety Program (Including IIPP)	Satisfactory
--	---------------------

Heat Illness Prevention Program	Satisfactory
--	---------------------

Safety Data Sheets	Satisfactory
---------------------------	---------------------

Daily Inspections	Satisfactory
--------------------------	---------------------

Comment	
The safety checklist is posted and up to date.	

Tailgate Meetings	Satisfactory
--------------------------	---------------------

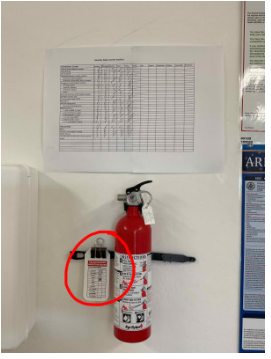
Sub-Contractor Meetings	Satisfactory
--------------------------------	---------------------

OSHA Permits	Satisfactory
Labor Law Postings	Satisfactory
Emergency / Other Postings	Satisfactory
First Aid / CPR Certification	Satisfactory

Emergency Items

Access / Egress	Satisfactory
------------------------	---------------------

Fire Extinguisher(s)	Satisfactory
-----------------------------	---------------------

Comment	
The fire extinguisher inside of the safety center is being inspected monthly.	

First Aid Kit(s)	Satisfactory
-------------------------	---------------------

Eye Wash Station	Satisfactory
-------------------------	---------------------

Other Fire Fighting Equipment (If needed)	N/A
--	------------

General Items

Restrooms	Satisfactory
------------------	---------------------

Hand Washing Stations	Unsatisfactory
------------------------------	-----------------------

Comment	
No hand washing station has yet been setup for this job site	-

Waste Containers	Satisfactory
-------------------------	---------------------

Potable Water	Satisfactory
----------------------	---------------------

Shade	Satisfactory
--------------	---------------------

Tools & Equipment

Power Tools	Satisfactory
--------------------	---------------------

Hand Tools	Satisfactory
-------------------	---------------------

Powder Actuated Tools	N/A
------------------------------	------------

Pneumatic Nailers	Satisfactory
--------------------------	---------------------

Mobile Elevated Work Platforms (MEWP's)	N/A
--	------------

Powered Industrial Trucks	N/A
----------------------------------	------------

Heavy Mobile Equipment (Excavators, Loaders, etc)	N/A
--	------------

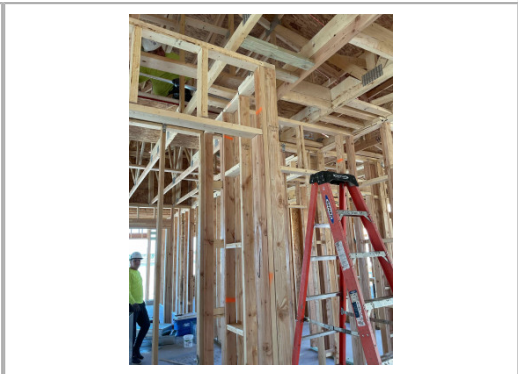
Cranes	N/A
---------------	------------

Cylinder Storage	N/A
-------------------------	------------

Ladders	Unsatisfactory
----------------	-----------------------

Comment

HVAC workers were using A-frame ladders to access the attics.



Operations

Personal Protective Equipment

Unsatisfactory

Comment

There was an HVAC worker not wearing fall protection when working above six feet in height.



Trenching & Excavation

Unsatisfactory

Comment

Need to barricade all open trenches.



Fall Protection

N/A

Guardrails

N/A

Floor / Wall Openings

N/A

Supported Scaffolding

N/A

Mobile Scaffolding

N/A

Suspended Scaffolding

N/A

Confined Spaces	N/A
Impalement Hazards	Satisfactory
Traffic Control	Satisfactory
Roofing Operations	N/A
Housekeeping	Satisfactory
Demolition	N/A
Silica Control	Satisfactory
Rigging Operations	N/A
Hot Work	N/A
Electrical Safety	Satisfactory
Lockout / Tagout	N/A
Stairways, Ramps, Runways	N/A
Other Items (that were observed)	N/A