

SAFETY INSPECTION REPORT

CONDUCTED FOR:
Woodside Homes

PROJECT:
Altair



INSPECTION TYPE:
General Construction

INSPECTOR : MARTIN RODRIGUEZ
DATE : JUNE 13, 2024
CITY : LINCOLN
STATE : CALIFORNIA

Safety Compliance Company is not responsible for unsafe conditions and situations not seen during this inspection. The items listed above represent only what was seen by the Safety Compliance Company Representative at the time of the inspection. Safety Compliance Company is not responsible for any ongoing unsafe condition(s) whether seen or unseen. In addition, Safety Compliance Company does not have the authority or authorization to approve, certify, or warranty any safety equipment or safety device. This agreement also indemnifies Safety Compliance Company of any omission, gross negligence, willful misconduct related to this report. Under Federal, State and Local Law, it is the responsibility of the employer and all subcontractors to mark all hazards with appropriate signs

SUMMARY OF INSPECTION

53 Items Inspected	37 Satisfactory	2 Unsatisfactory	14 N/A
------------------------------	---------------------------	----------------------------	------------------

Arrived on site and checked in at office. Weather conditions are sunny with clear skies and temperatures in the 80's. There is plenty of water on site for all workers. There is plenty of shade for all personnel. All required PPE is being worn.

Hand tools are in good condition and being used correctly. Power tools are in good working condition and are being used safely. Saws are in good working condition with all required safety guards and functional. Ladders are set up correctly and secured to prevent accidental movement. Powered industrial trucks (forklifts) are being operated safely and operators are wearing seatbelts. Housekeeping is maintained as work progresses. Suspended scaffold is correctly installed and all required railing is in place, including end railing/guards. Restrooms and hand wash stations are clean and serviced frequently. First aid kit is stocked and available in the project office. Fire extinguisher is charged and available in the project office. Safety Center is available in the project office. Safety checklist is signed and up to date. Fall protection is being worked on by framers. Excellent work!

The following safety items were observed during my inspection and require attention:

- 1) Lot 69: Upper section of scaffold along the side of home and over garage poses a fall hazard and needs railing on interior side of scaffold.
- 2) Lot 69: Upper section of scaffold is not fully planked, as required.
- 3) Lot 70: Upper sections of scaffold on both sides of home need railing on home side of scaffold.
- 4) Lot 75: Scaffold railing on upper section has been removed and left hanging. All scaffold railing must be maintained at all times. Do not modify scaffold without supervision of scaffold competent person and erector.
- 5) Observed 3 workers not wearing safety glasses. CORRECTED IMMEDIATELY.

INSPECTION ITEMS

Documentation	
Site Contact	Satisfactory
Comment	
Denis Dzik (Superintendent)	-
Safety Program (Including IIPP)	Satisfactory
Comment	

Injury Illness Prevention Program (IIPP) is available in the project office.	-
--	---

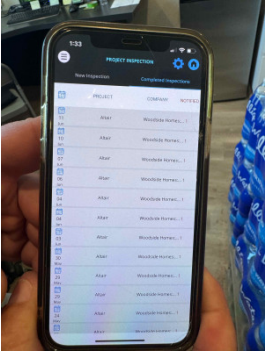
Heat Illness Prevention Program	Satisfactory
--	---------------------

Comment	
Heat Illness Prevention Awareness (HIPA) program is available int project office and in the IIPP.	-

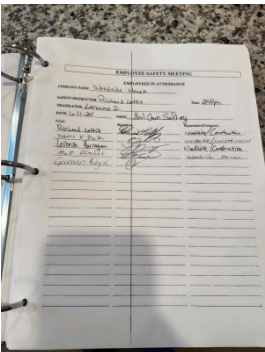
Safety Data Sheets	Satisfactory
---------------------------	---------------------

Comment	
Safety Data Sheets (SDS) are on file.	-

Daily Inspections	Satisfactory
--------------------------	---------------------

Comment	
Daily inspections are being complete electronically and are up to date.	

Tailgate Meetings	Satisfactory
--------------------------	---------------------

Comment	
Tailgate safety meeting are held weekly and documentation is available in the project office.	

Sub-Contractor Meetings	Satisfactory
--------------------------------	---------------------

Comment	
Contractor safety meeting are held weekly and documentation is submitted to project team.	-

OSHA Permits	Satisfactory
---------------------	---------------------

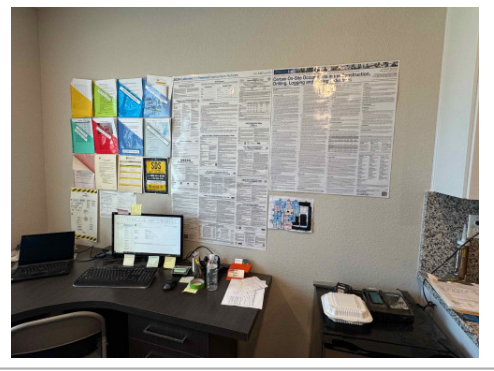
Comment	
----------------	--

All required permits are on file.	-
-----------------------------------	---

Labor Law Postings	Satisfactory
---------------------------	---------------------

Comment	
----------------	--

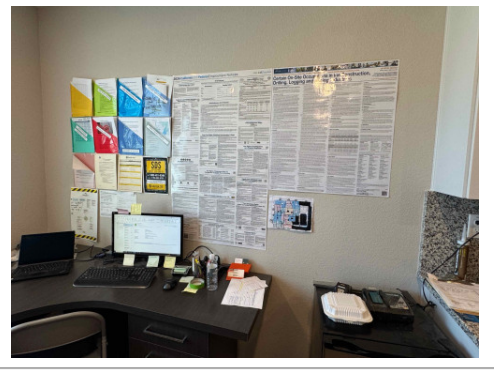
Labor postings are available in the project office.



Emergency / Other Postings	Satisfactory
-----------------------------------	---------------------

Comment	
----------------	--

Emergency contact list and hospital route map are posed in the project office



First Aid / CPR Certification	Satisfactory
--------------------------------------	---------------------

Comment	
----------------	--

First aid/CPR certification is on file.	-
---	---

Emergency Items	
------------------------	--

Access / Egress	Satisfactory
------------------------	---------------------

Comment	
----------------	--

Access egress points are clear and free from obstructions.



Elevator for Hoisting Workers (if needed)

N/A

Fire Extinguisher(s)

Satisfactory

Comment

Fire extinguisher is charged and available throughout the project.

-

First Aid Kit(s)

Satisfactory

Comment

First aid kit is stocked and available in the project office.



Eye Wash Station

Satisfactory


Comment


There is no eye wash station mounted on site, but the first aid kit has a small bottle of eye wash solution.



Other Fire Fighting Equipment (If needed)		Satisfactory
Comment		
Fire hydrant is clear and free from obstruction if needed by the fire department.	-	

General Items

Restrooms		Satisfactory
Comment		
Restrooms are clean and serviced frequently.		

Hand Washing Stations		Satisfactory
Comment		
Hand wash stations are located by the restrooms and are serviced frequently.		

Waste Containers		Satisfactory
Comment		

Waste containers are located by the wash stations and restrooms and are serviced frequently.



Potable Water

Satisfactory

Comment

There is plenty of water on site for all workers.

-

Shade

Satisfactory

Comment

There is plenty of shade on site for all workers.



Tools & Equipment

Power Tools

Satisfactory

Comment

Power tools are in good working condition and are being used safely. Saws have all required guards installed, as required.



Hand Tools

Satisfactory

Comment	
Hand tools are in good condition and being used correctly.	-


Powder Actuated Tools	N/A
------------------------------	------------

Pneumatic Nailers	Satisfactory
--------------------------	---------------------

Comment	
Pneumatic nailers are in good condition and being used safely.	-

Mobile Elevated Work Platforms (MEWP's)	N/A
--	------------

Powered Industrial Trucks	Satisfactory
----------------------------------	---------------------

Comment	
Powered Industrial Trucks (forklifts) are being operated safely and operators are wearing seatbelts.	

Heavy Mobile Equipment (Excavators, Loaders, etc)	N/A
--	------------

Cranes	N/A
---------------	------------

Cylinder Storage	N/A
-------------------------	------------

Ladders	Satisfactory
----------------	---------------------

Comment	
Ladders are set up correctly and secured to prevent accidental movement.	-

Operations

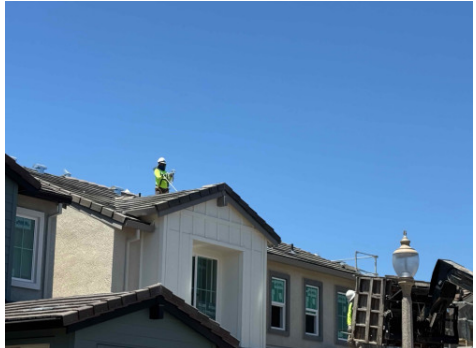
Personal Protective Equipment	Unsatisfactory
--------------------------------------	-----------------------

Comment	
----------------	--


Observed 3 workers not wearing safety glasses. CORRECTED IMMEDIATELY.	-
---	---

Trenching & Excavation	N/A
-----------------------------------	------------

Fall Protection	Satisfactory
------------------------	---------------------

Comment	
Fall protection is being worn by roofing personnel and anchors points will withstand the 5000 pound requirement. Great work!	

Guardrails	Satisfactory
-------------------	---------------------

Comment	
Guardrails are installed and meet the 200 pound Cal/OSHA requirement.	

Floor / Wall Openings	Satisfactory
------------------------------	---------------------

Comment	
Wall and floor openings are protected and covered.	-

Supported Scaffolding	Unsatisfactory
------------------------------	-----------------------

Comment	
----------------	--

Lot 69: Upper section of scaffold along the side of home and over garage poses a fall hazard and needs railing on interior side of scaffold.



Lot 69: Upper section of scaffold is not fully planked, as required.



Lot 70: Upper sections of scaffold on both sides of home need railing on home side of scaffold.



Lot 75: Scaffold railing on upper section has been removed and left hanging. All scaffold railing must be maintained at all times. Do not modify scaffold without supervision of scaffold competent person and erector.



Mobile Scaffolding	N/A
---------------------------	------------

Suspended Scaffolding	Satisfactory
------------------------------	---------------------

Comment	
----------------	--

Suspended scaffold is installed and all required railing is in place.



Confined Spaces **N/A**

Impalement Hazards **Satisfactory**

Comment

Impalement hazards are protected with rebar caps, as required.

-

Traffic Control **Satisfactory**

Comment

Traffic control is adequate and prevents public vehicular traffic from driving through active construction areas.

-

Roofing Operations **Satisfactory**

Comment

Roofing operations are being completed safely.



Housekeeping **Satisfactory**

Comment

Housekeeping is being maintained as work progresses.



Demolition **N/A**

Silica Control **N/A**

Rigging Operations **N/A**

Hot Work **N/A**

Electrical Safety **Satisfactory**

Comment

Electrical equipment and cords are in good condition with all insulation intact.



Lockout / Tagout **N/A**

Stairways, Ramps, Runways **Satisfactory**

Comment

Stairways, ramps and runways are clear and free from obstructions.

-

Other Items (that were observed) **Satisfactory**

Comment

Safety Center is set up and safety checklist is signed and up to date.

