

SAFETY INSPECTION REPORT

CONDUCTED FOR:
Woodside Homes

PROJECT:
Wildflower



INSPECTION TYPE:
General Construction

INSPECTOR : MARTIN RODRIGUEZ
DATE : MAY 22, 2024
CITY : ROSEVILLE
STATE : CALIFORNIA

Safety Compliance Company is not responsible for unsafe conditions and situations not seen during this inspection. The items listed above represent only what was seen by the Safety Compliance Company Representative at the time of the inspection. Safety Compliance Company is not responsible for any ongoing unsafe condition(s) whether seen or unseen. In addition, Safety Compliance Company does not have the authority or authorization to approve, certify, or warranty any safety equipment or safety device. This agreement also indemnifies Safety Compliance Company of any omission, gross negligence, willful misconduct related to this report. Under Federal, State and Local Law, it is the responsibility of the employer and all subcontractors to mark all hazards with appropriate signs

SUMMARY OF INSPECTION

52 Items Inspected	32 Satisfactory	2 Unsatisfactory	18 N/A
------------------------------	---------------------------	----------------------------	------------------

Arrived on site and met with Superintendent in the field. Weather conditions is sunny with temperatures in the 80's. There is plenty of shade on site for all workers. Safety documentaion is current and available in the project office.

Construction activities include, but not limited not limited to concrete pad predict, concrete finishing and touch up.

Electrical equipment is in good condition. Electrical cords are in good working condition and all insulation is intact. Access/egress points are free of obstruction and maintained. Fire extinguishers are charged and ready for use. Hand tools are being used correctly. Power tools are in good condition and saws have all required safety guards.

The following safety items were noted and required attention:

- First aid kit needs servicing.
- Eye wash solution is needed in first aid kit.

INSPECTION ITEMS

Documentation	
Site Contact	Satisfactory
Comment	
Paul Chayka (Superintendent)	-
Safety Program (Including IIPP)	Satisfactory
Comment	
Injury Illness Prevention Program (IIPP) binder is available in the project office.	-
Heat Illness Prevention Program	Satisfactory
Comment	
Heat Illness Prevention Awareness (HIPA) is in IIPP binder and available in the project office.	-

Safety Data Sheets **Satisfactory**

Comment

Safety Data Sheets (SDS) are on file.	-
---------------------------------------	---

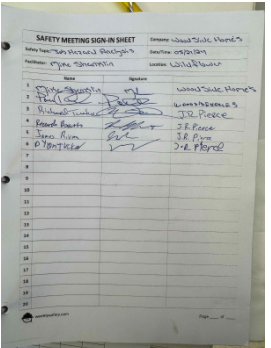
Daily Inspections **Satisfactory**

Comment

Daily inspection are being completed and available in the project office.	-
---	---

Tailgate Meetings **Satisfactory**

Comment

Tailgate safety meetings are being completed and are available in the project office.	
---	--

Sub-Contractor Meetings **Satisfactory**

Comment

Contractor safety meetings are being completed and are on file.	-
---	---

OSHA Permits **Satisfactory**

Comment

All required permits are on file.	-
-----------------------------------	---

Labor Law Postings **Satisfactory**

Comment

Labor postings are available in the project office.



Emergency / Other Postings

Satisfactory

Comment

Emergency contact list and hospital map is posted in the project office.



First Aid / CPR Certification

Satisfactory

Comment

First aid/CPR certification is on file.

-

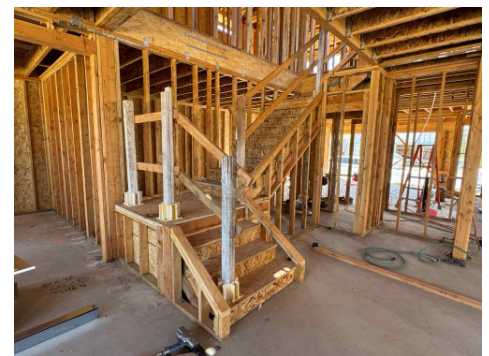
Emergency Items

Access / Egress

Satisfactory

Comment

Access/egress points are free of obstruction and maintained as required.



Fire Extinguisher(s)

Satisfactory

Comment

Fire extinguishers are charged and available throughout the project.

-

First Aid Kit(s)

Unsatisfactory

Comment

First aid kit in project office needs servicing.



Eye Wash Station

Unsatisfactory

Comment

There is no eye wash station on site and the first aid kit needs to be serviced.



Other Fire Fighting Equipment (If needed)

N/A

General Items

Restrooms

Satisfactory

Comment

Restrooms are clean and serviced frequently.

-

Hand Washing Stations

Satisfactory

Comment

Hand wash stations are located by restrooms.

-

Waste Containers	Satisfactory
-------------------------	---------------------

Comment	
----------------	--

Waste containers are located by restrooms.	-
--	---

Potable Water	Satisfactory
----------------------	---------------------

Comment	
----------------	--

There is plenty of drinking water on site for all workers.	-
--	---

Shade	Satisfactory
--------------	---------------------

Comment	
----------------	--

There is plenty of shade for all workers on site.	
---	--



Tools & Equipment	
------------------------------	--

Power Tools	Satisfactory
--------------------	---------------------

Comment	
----------------	--

Power tools are in good condition and being used safely.	-
--	---

Hand Tools	Satisfactory
-------------------	---------------------

Comment	
----------------	--

Hand tools are in good condition and being used correctly.	-
--	---

Powder Actuated Tools	N/A
------------------------------	------------

Pneumatic Nailers	Satisfactory
--------------------------	---------------------

Comment	
----------------	--

Pneumatic nailers are being used safely.	-
--	---

Mobile Elevated Work Platforms (MEWP's)	N/A
--	------------

Powered Industrial Trucks	N/A
----------------------------------	------------

Heavy Mobile Equipment (Excavators, Loaders, etc)	N/A
--	------------

Cranes	N/A
---------------	------------

Cylinder Storage	N/A
-------------------------	------------

Ladders	Satisfactory
----------------	---------------------

Comment	
Ladders are being used correctly and secured as required.	-


Operations

Personal Protective Equipment	Satisfactory
--------------------------------------	---------------------

Comment	
All PPE is being work by workers.	-

Trenching & Excavation	N/A
-----------------------------------	------------

Fall Protection	Satisfactory
------------------------	---------------------

Comment	
Fall protection is being worn by framers. Nice work!	

Guardrails	Satisfactory
-------------------	---------------------

Comment	
----------------	--

Guard rails are installed as required.



Floor / Wall Openings	Satisfactory
------------------------------	---------------------

Comment	
Floor and wall openings are protected as required.	-

Supported Scaffolding	N/A
------------------------------	------------

Mobile Scaffolding	N/A
---------------------------	------------

Suspended Scaffolding	N/A
------------------------------	------------

Confined Spaces	N/A
------------------------	------------

Impalement Hazards	Satisfactory
---------------------------	---------------------

Comment	
All impalement hazards are protected by rebar caps.	-

Traffic Control	Satisfactory
------------------------	---------------------

Comment	
Traffic control is adequate.	-

Roofing Operations	Satisfactory
---------------------------	---------------------

Comment	
Roofing operations are being done safely.	-

Housekeeping	Satisfactory
---------------------	---------------------

Comment	
Housekeeping is being maintained.	-

Demolition	N/A
-------------------	------------

Silica Control	N/A
-----------------------	------------

Rigging Operations	N/A
---------------------------	------------


Hot Work	N/A
-----------------	------------

Electrical Safety	Satisfactory
--------------------------	---------------------

Comment	
Electrical equipment and cords are in good condition and all insulation is intact.	-

Lockout / Tagout	N/A
-------------------------	------------

Stairways, Ramps, Runways	Satisfactory
----------------------------------	---------------------

Comment	
Stairways have railing installed as required.	

Other Items (that were observed)	N/A
---	------------