

SAFETY INSPECTION REPORT

CONDUCTED FOR:
Wright Contracting

PROJECT:
Montgomery High School



INSPECTION TYPE:
General Construction

INSPECTOR : JORDAN DUZI
DATE : JULY 23, 2024
CITY : SANTA ROSA
STATE : CA

Safety Compliance Company is not responsible for unsafe conditions and situations not seen during this inspection. The items listed above represent only what was seen by the Safety Compliance Company Representative at the time of the inspection. Safety Compliance Company is not responsible for any ongoing unsafe condition(s) whether seen or unseen. In addition, Safety Compliance Company does not have the authority or authorization to approve, certify, or warranty any safety equipment or safety device. This agreement also indemnifies Safety Compliance Company of any omission, gross negligence, willful misconduct related to this report. Under Federal, State and Local Law, it is the responsibility of the employer and all subcontractors to mark all hazards with appropriate signs

SUMMARY OF INSPECTION

53 Items Inspected	36 Satisfactory	0 Unsatisfactory	17 N/A
------------------------------	---------------------------	----------------------------	------------------

Site was in good overall condition. Steel structure is going up. Superintendent has been made aware that structure is above 36' and is in the process of pulling an OSHA project permit.

O'Brien employees were asked to secure their access ladders - this was corrected on site.

All impalement hazards were capped.

Good cylinder storage with fire protective barriers in place.

Mobile crane on site.

Ind truck operator had seatbelt secured.

Housekeeping and material storage being maintained.

Cords and tools in good condition.

PPE was being worn including when workers are around heavy equipment.

INSPECTION ITEMS

Documentation

Site Contact	Satisfactory
Comment	
Hector Soto	-

Safety Program (Including IIPP)

Satisfactory

Comment	
Available in site trailer	-

Heat Illness Prevention Program	Satisfactory
--	---------------------

Safety Data Sheets	Satisfactory
---------------------------	---------------------

Comment	
SDS are available for employee access	-

Daily Inspections	Satisfactory
--------------------------	---------------------

Tailgate Meetings	Satisfactory
--------------------------	---------------------

Sub-Contractor Meetings	N/A
--------------------------------	------------

OSHA Permits	Satisfactory
---------------------	---------------------

Comment	
In the process of being pulled as project is above 36'	-

Labor Law Postings	Satisfactory
---------------------------	---------------------

Comment	
Labor law posters are up	

Emergency / Other Postings	Satisfactory
-----------------------------------	---------------------

Comment	
Emergency posters are on site and directions to nearest medical facility are posted.	-

First Aid / CPR Certification	Satisfactory
--------------------------------------	---------------------

Emergency Items

Access / Egress	Satisfactory
Comment	
Access is compliant and fence present around site perimeter	-

Elevator for Hoisting Workers (if needed)	N/A
--	------------

Fire Extinguisher(s)	Satisfactory
Comment	
Present throughout site	-

First Aid Kit(s)	Satisfactory
-------------------------	---------------------

Eye Wash Station	N/A
-------------------------	------------

Other Fire Fighting Equipment (If needed)	N/A
--	------------

General Items

Restrooms	Satisfactory
------------------	---------------------

Hand Washing Stations	Satisfactory
------------------------------	---------------------

Waste Containers	Satisfactory
-------------------------	---------------------

Potable Water	Satisfactory
----------------------	---------------------

Shade	Satisfactory
Comment	
Shade tent is up	

Tools & Equipment

Power Tools

Satisfactory

Hand Tools

Satisfactory

Powder Actuated Tools

N/A

Pneumatic Nailers

N/A

Mobile Elevated Work Platforms (MEWP's)

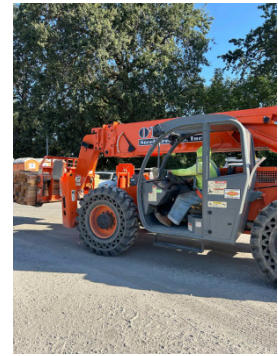
N/A

Powered Industrial Trucks

Satisfactory

Comment

Worker had seat belt secured

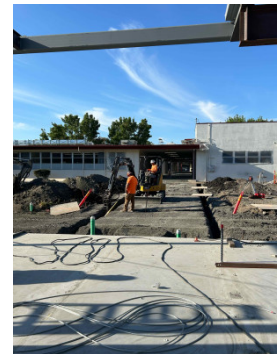


Heavy Mobile Equipment (Excavators, Loaders, etc)

Satisfactory

Comment


Excavator being operated safely



Cranes


Satisfactory

Comment

<p>Mobile crane on site</p>	
-----------------------------	---

<p>Cylinder Storage</p>	<p>Satisfactory</p>
--------------------------------	----------------------------

<p>Comment</p>	
-----------------------	--

<p>Fire protective barrier in place</p>	
---	--

<p>Ladders</p>	<p>Satisfactory</p>
-----------------------	----------------------------

<p>Comment</p>	
-----------------------	--

<p>Extended 3ft. Corrected on site and secured</p>	
--	---

Operations

<p>Personal Protective Equipment</p>	<p>Satisfactory</p>
---	----------------------------

<p>Comment</p>	
-----------------------	--

<p>PPE being worn</p>	<p>-</p>
-----------------------	----------

Trenching & Excavation		Satisfactory
Comment		
Currently blocked off by fence and materials.		-

Fall Protection		Satisfactory
Comment		
Fall protection systems available on site for steel workers		-

Guardrails		Satisfactory
Comment		
Cable railing being installed as decking is laid		

Floor / Wall Openings	Satisfactory
------------------------------	---------------------


Supported Scaffolding	N/A
------------------------------	------------

Mobile Scaffolding	N/A
---------------------------	------------

Suspended Scaffolding	N/A
------------------------------	------------

Confined Spaces	N/A
------------------------	------------

Impalement Hazards		Satisfactory
Comment		

Anchor bolts capped	
---------------------	---

Traffic Control	N/A
------------------------	------------

Roofing Operations	N/A
---------------------------	------------

Housekeeping	Satisfactory
---------------------	---------------------

Demolition	N/A
-------------------	------------

Silica Control	Satisfactory
-----------------------	---------------------

Rigging Operations	N/A
---------------------------	------------

Hot Work	Satisfactory
-----------------	---------------------

Comment	
----------------	--

No issues observed. Fire extinguishers present near cylinders	-
---	---

Electrical Safety	Satisfactory
--------------------------	---------------------

Comment	
----------------	--

Cords in good condition throughout site	-
---	---

Lockout / Tagout	N/A
-------------------------	------------

Stairways, Ramps, Runways	Satisfactory
----------------------------------	---------------------

Other Items (that were observed)	N/A
---	------------