

SAFETY INSPECTION REPORT

CONDUCTED FOR:
Wright Contracting

PROJECT:
San Rafael High School Aquatic Center



INSPECTION TYPE:
General Construction

INSPECTOR : JORDAN DUZI
DATE : SEPTEMBER 13, 2024
CITY : SAN RAFAEL
STATE : CA

Safety Compliance Company is not responsible for unsafe conditions and situations not seen during this inspection. The items listed above represent only what was seen by the Safety Compliance Company Representative at the time of the inspection. Safety Compliance Company is not responsible for any ongoing unsafe condition(s) whether seen or unseen. In addition, Safety Compliance Company does not have the authority or authorization to approve, certify, or warranty any safety equipment or safety device. This agreement also indemnifies Safety Compliance Company of any omission, gross negligence, willful misconduct related to this report. Under Federal, State and Local Law, it is the responsibility of the employer and all subcontractors to mark all hazards with appropriate signs

SUMMARY OF INSPECTION

53 Items Inspected	34 Satisfactory	3 Unsatisfactory	16 N/A
------------------------------	---------------------------	----------------------------	------------------

Site was in good overall condition

Demo was being completed

Workers cutting rebar were also cutting concrete with excess dust being emitted - worker should have on dust mask and be using water to minimize dust for surrounding workers.

Also see photos for access ladders needed in trench holes/vaults.

All rebar was correctly capped.

Delineation up around any openings.

Trailer to be checked on next visit as it was locked.

Good overall PPE observed throughout site.

Heavy equipment being operated safely

Housekeeping and material storage being maintained

Restrooms, wash stations and trash cans are present.

Cords and tools in good condition.

INSPECTION ITEMS

Documentation	
Site Contact	Satisfactory
Comment	
Justyn Holt	-

Safety Program (Including IIPP)		Satisfactory
Comment		
Safety Program is available		-
Heat Illness Prevention Program		Satisfactory
Safety Data Sheets		
Comment		
SDS are available for employee access		-
Daily Inspections		Satisfactory
Comment		
Ensure daily inspections are being completed and filled out timely on site		-
Tailgate Meetings		Satisfactory
Comment		
Should take place every ten days with Wright employees		-
Sub-Contractor Meetings		N/A
OSHA Permits		Satisfactory
Comment		
Project permit needed if building will exceed 36'		-
Labor Law Postings		Satisfactory
Comment		
Labor law postings are in place as required.		-
Emergency / Other Postings		Satisfactory
Comment		
To be checked on next visit		-
First Aid / CPR Certification		Satisfactory

Comment

Ensure cert card is up to date for site superintendent - to be checked on next visit

-

Emergency Items

Access / Egress

Satisfactory

Comment

Perimeter fence is in place - access is compliant.

-

Elevator for Hoisting Workers (if needed)

N/A

Fire Extinguisher(s)

Satisfactory

First Aid Kit(s)

Satisfactory

Comment

Should be present in trailer

-

Eye Wash Station

N/A

Other Fire Fighting Equipment (If needed)

N/A

General Items

Restrooms

Satisfactory

Comment

On site and in good condition



Hand Washing Stations

Satisfactory

Waste Containers	Satisfactory
-------------------------	---------------------

Potable Water	Satisfactory
----------------------	---------------------

Shade	Satisfactory
--------------	---------------------

Tools & Equipment

Power Tools	Satisfactory
--------------------	---------------------

Comment	
In good condition	-

Hand Tools	Satisfactory
-------------------	---------------------

Powder Actuated Tools	Satisfactory
------------------------------	---------------------

Pneumatic Nailers	N/A
--------------------------	------------

Mobile Elevated Work Platforms (MEWP's)	Satisfactory
--	---------------------

Comment	
No lifts in use during walk	-

Powered Industrial Trucks	N/A
----------------------------------	------------

Heavy Mobile Equipment (Excavators, Loaders, etc)	Satisfactory
--	---------------------

Comment	
Heavy equipment being operated safely throughout site	

Cranes	N/A
---------------	------------

Cylinder Storage **Satisfactory**

Comment

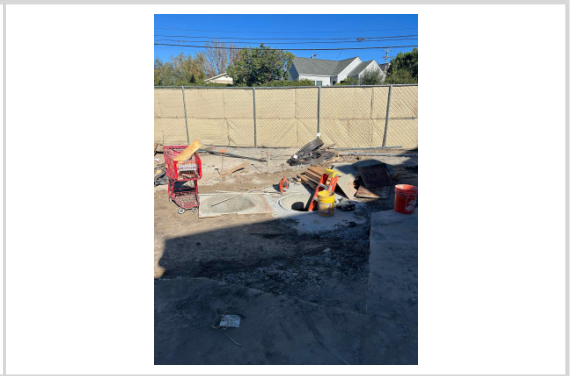
Fire protective barrier present



Ladders **Unsatisfactory**

Comment

Extension ladder needed rather than a leaned A frame



Operations

Personal Protective Equipment **Satisfactory**

Trenching & Excavation **Unsatisfactory**

Comment

Worker needs access ladder in place when deeper than 4'



Fall Protection	Satisfactory
------------------------	---------------------


Comment	
----------------	--

No issues observed	-
--------------------	---

Guardrails	N/A
-------------------	------------

Floor / Wall Openings	Satisfactory
------------------------------	---------------------

Comment	
----------------	--

Delineation up around impalement hazards and openings	
---	---

Supported Scaffolding	N/A
------------------------------	------------

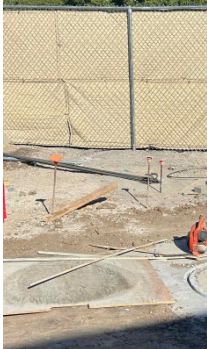
Mobile Scaffolding	N/A
---------------------------	------------

Suspended Scaffolding	N/A
------------------------------	------------

Confined Spaces	Satisfactory
------------------------	---------------------

Impalement Hazards	Satisfactory
---------------------------	---------------------

Comment	
----------------	--

Any metal stakes were capped	
------------------------------	---

Traffic Control	N/A
------------------------	------------

Roofing Operations	N/A
---------------------------	------------


Housekeeping	Satisfactory
---------------------	---------------------

Comment	
Good material storage and housekeeping	

Demolition	Satisfactory
-------------------	---------------------

Comment	
Demo being done safely	

Silica Control	Unsatisfactory
-----------------------	-----------------------

Comment	
Excess dust when cutting	

<p>Ensure water is being used to minimize dust</p>	
--	---

<p>Rigging Operations</p>	<p>N/A</p>
----------------------------------	-------------------

<p>Hot Work</p>	<p>Satisfactory</p>
------------------------	----------------------------

<p>Electrical Safety</p>	<p>Satisfactory</p>
---------------------------------	----------------------------

<p>Comment</p>	
<p>Cords in good condition</p>	<p>-</p>

<p>Lockout / Tagout</p>	<p>N/A</p>
--------------------------------	-------------------

<p>Stairways, Ramps, Runways</p>	<p>Satisfactory</p>
---	----------------------------

<p>Other Items (that were observed)</p>	<p>N/A</p>
--	-------------------